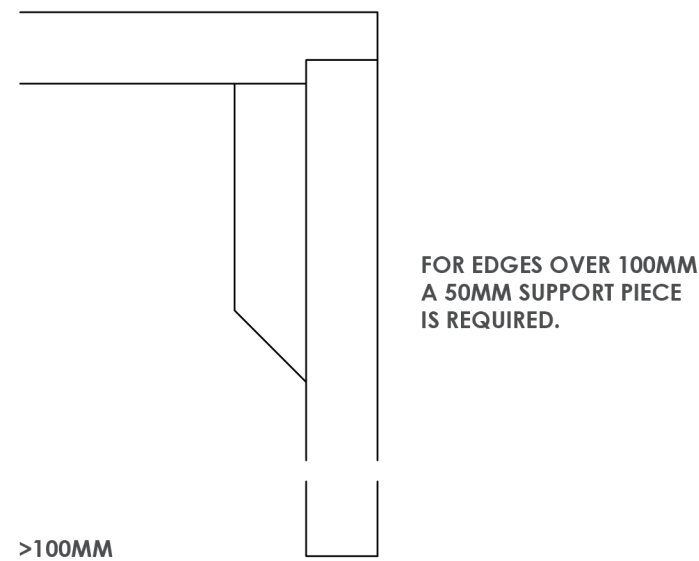
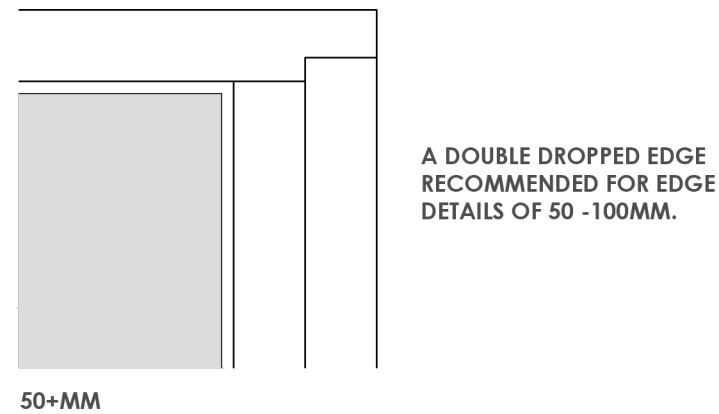
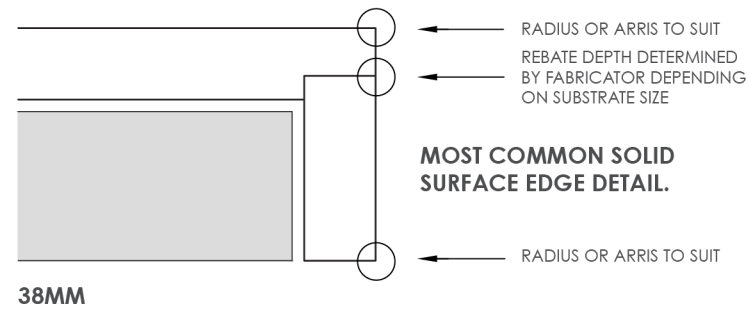


BASIC BENCHTOPS

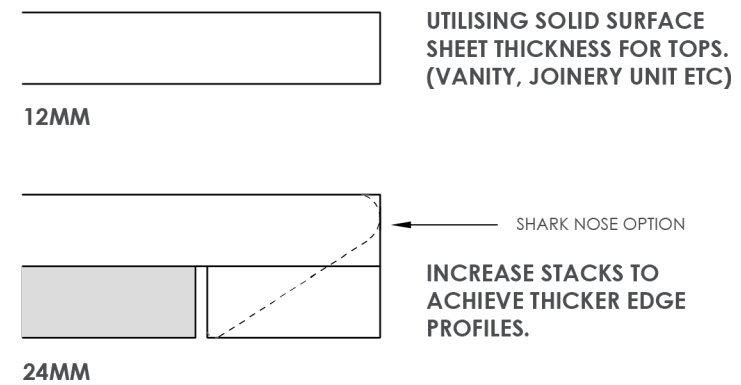
DETAILING NOTES AND PROFILE EXAMPLES

- When specifying 12mm for your Staron countertop;
- Nominate your required edge thickness and profile
- Solid surface is not usually mitred, however a marbled (directional) may be best fabricated with a mitre
- The decision to mitre is best made by the fabricator, however can be discussed when needed
- Join details are noted on this example for education purposes; however are not required on documentation
- Staron Solid Surface can be detailed seamlessly
- Staron requires support
- Ladder, rail or full support depending upon application will be selected by the fabricator
- Overhang allowance up to 150mm for 12mm and up to 300mm for 38mm
- Larger overhang will require additional forms of support

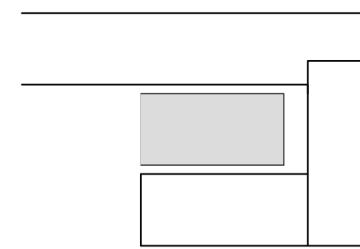
STANDARD DETAILS



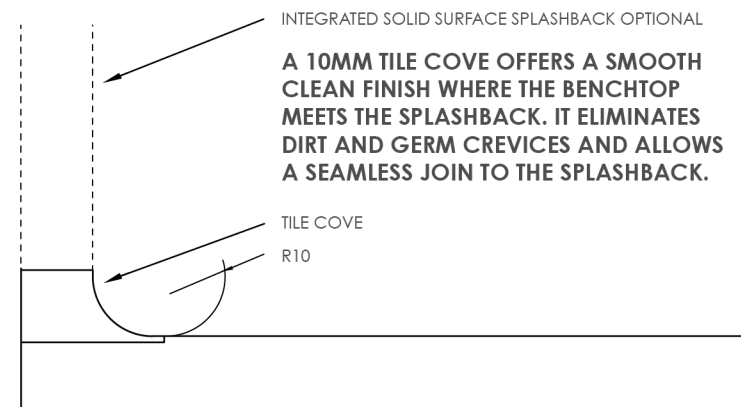
THINNER BENCHTOPS



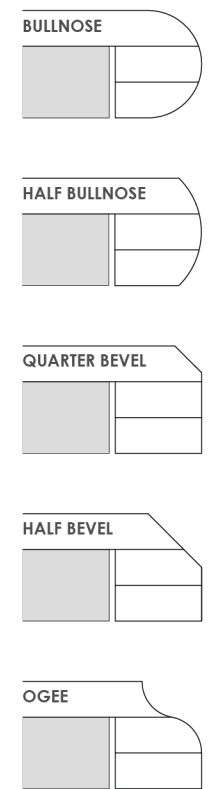
BOTTOM RETURN OPTION



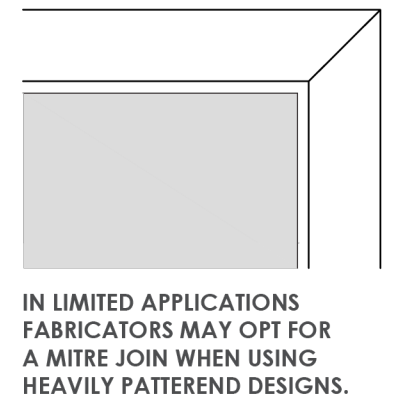
COVE / 10MM TILE COVE



THICKER BENCHTOPS



MITRE JOIN



EXAMPLES OF COMMON SOLID SURFACE DETAILS

staron
Example

AUSTARON
SURFACES

AUS: 17/30 Heathcote Rd, Moorebank NSW 2170
 NZ: 94 Nevay Rd, Karaka Bays Wellington 6620
 phone: 02 9822 7055
 email: sales@austaron.com.au
 web: austaron.com.au

TITLE **SPECIFYING STARON SOLID SURFACES**
 DETAILING

DWG NO. STARON EXAMPLE : SPECIFICATION - 001

DOCUMENTATION REMAINS PROPERTY OF AUSTARON SURFACES AND CAN ONLY BE USED WHEN SPECIFYING STARON SOLID SURFACE.

Architect to determine design suitability.

Contact your Staron representative for any colour samples or technical information.

DOCUMENTING EXAMPLE

CODE	ITEM	LOCATION	DESCRIPTION	FINISH	SUPPLIER
SSO1	Solid Surface Staron Other brand names Reconstituted stone	Laundry Benchtop	Thickness: 12mm solid surface 3680 x 760mm 38mm edge profile Thickness: 20mm Thickness: 12mm brand name	Brand: Staron Colour: Sanded Icicle Code: SI414 Brand: Austaron Colour: brand name White	Austaron Surfaces Contact: Email: Mobile: Staron

CROSSED ENTRIES ARE COMMON MISTAKES

CORRECT PRODUCT DESCRIPTIONS

Acrylic / Solid Surface: Mineral blended with Acrylic Resin

Reconstituted Stone: crushed Stone/Quartz blended with Polyester Resin

Porcelain/Ultra-Compact: Glass, Porcelain and Quartz

Brands of Solid Surface: are not a product description

THICKNESS EQUIVALENTS

20mm Reconstituted Stone = **24mm Acrylic / Solid Surface**

40mm Reconstituted Stone = **38mm Acrylic / Solid Surface**

staron
Example

AUSTARON
SURFACES

AUS: 17/30 Heathcote Rd, Moorebank NSW 2170
NZ: 94 Nevay Rd, Karaka Bays Wellington 6620
phone: 02 9822 7055
email: sales@austaron.com.au
web: austaron.com.au

TITLE **SPECIFYING STARON SOLID SURFACES**
DOCUMENTING

DWG NO.
STARON EXAMPLE : SPECIFICATION - 002

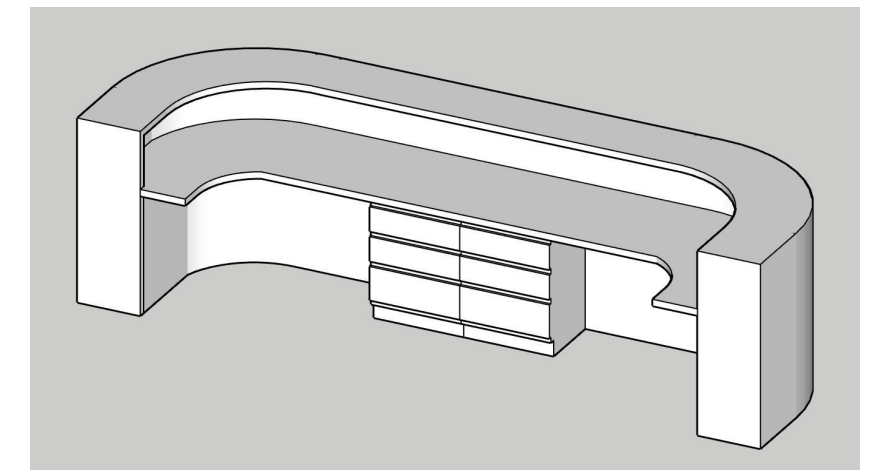
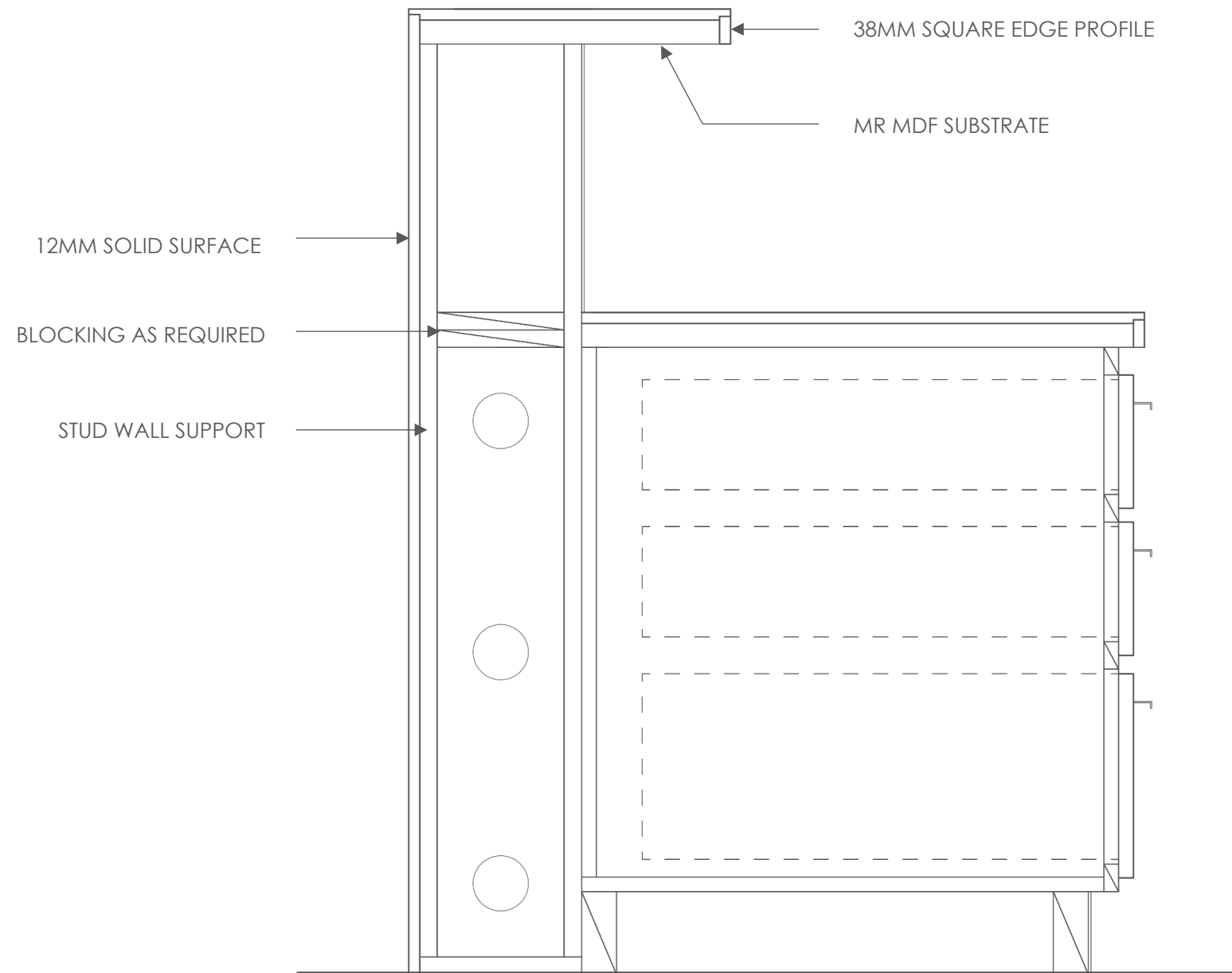
DOCUMENTATION REMAINS PROPERTY OF
AUSTARON SURFACES AND CAN ONLY BE USED
WHEN SPECIFYING STARON SOLID SURFACE.

Architect to determine design suitability.

Contact your Staron representative for any
colour samples or technical information.

VERTICAL JOINERY EXAMPLE

- Staron requires support
- A sturdy rigid support is essential
- Stud wall or similar variation



staron
Example

AUSTARON
SURFACES

AUS: 17/30 Heathcote Rd, Moorebank NSW 2170
 NZ: 94 Nevay Rd, Karaka Bays Wellington 6620
 phone: 02 9822 7055
 email: sales@austaron.com.au
 web: austaron.com.au

TITLE **SPECIFYING STARON SOLID SURFACES**
EXAMPLE

DWG NO.
 STARON EXAMPLE : SPECIFICATION - 003

DOCUMENTATION REMAINS PROPERTY OF AUSTARON SURFACES AND CAN ONLY BE USED WHEN SPECIFYING STARON SOLID SURFACE.

Architect to determine design suitability.

Contact your Staron representative for any colour samples or technical information.