

Kaynemaile for Residential

kaynemaile.com/exterior-residential

A Unique Innovation

Kaynemaile architectural mesh is a patented, world-leading innovation. A modern chainmail fabric consisting of polycarbonate interlinked rings formed seamlessly together.

'Chainmail' House, Mt Maunganui
Design: Adam Taylor Architecture
Photography: Marshall Masters

Contemporary design and high performance define Kaynemaile exterior screens which provide energy efficient solar-protection and add privacy. Kaynemaile can design fixed or movable solar screens for residential projects from individual homes to large scale apartment buildings. Kaynemaile reduces solar gain into a building by up to 70%.

Kaynemaile architectural mesh is a patented, world-leading innovation. We believe the benefits of the Kaynemaile product are extraordinary.

BENEFITS



Solar Reduction & High Airflow



High Airflow



Eco-conscious Manufacturing



Fire Resistant



Quick & Easy Installation



10 Year Warranty

PROJECTS

For project details, click on the image below



Solar Privacy Screening for Elegant Double Bay Home

Kaynemaile screens provide privacy and solar shading for this contemporary home situated in Sydney's harbour side suburb of Double Bay. Kaynemaile mesh screens are fitted within simple steel frames and compliment the elegant design and thoughtful material selection.



Coastal Solar & Privacy Dreams for Gold Coast Abode

The hot Australian climate meant solar reduction and privacy were key thought points in the design process for this NSW home. Kaynemaile was perfect for the job. "Kaynemaile Bronze mesh was chosen as a contemporary design element to reduce the solar heat gain from the harsh afternoon sun into the western facade of the beachfront home" says Nic Raath from Create Architecture.

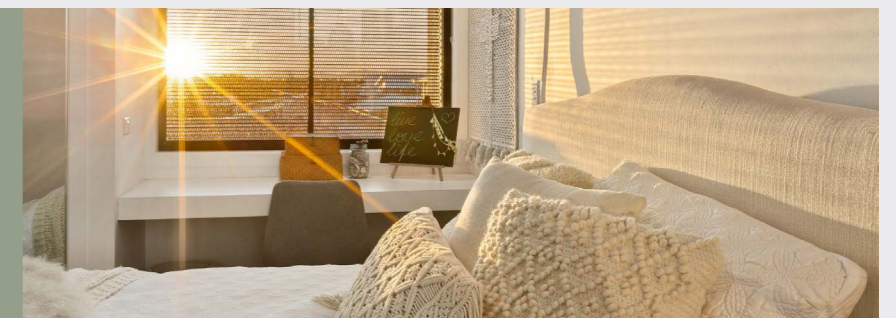


Chainmail House: Where Sun, Surf and Shading Meet

Kaynemaile provides solar reduction and privacy for this home situated steps away from the beach. Kaynemaile easily copes with the demanding coastal environment and extreme Southern Hemisphere sun. Privacy screening was a major factor for material selection as the house faces a busy road in the seaside town of Mount Maunganui. Kaynemaile provides privacy without restricting the sea views.

"[Kaynemaile mesh] ticked the boxes being a transparent low maintenance solution made from non-corrosive material."

—NIC RAATH, CREATE ARCHITECTURE



AUSTARON SURFACES

proud distributors of

staron[®]
Solid Surfaces

MARIO
ROMANO **WALLS**

a c r y l i c
c o u t u r e

Kaynemaile[®] 
Architectural Mesh

Austaron Surfaces | ph: 02 9822 7055 | austaron.com.au

For local Austaron Surfaces representative details, please visit: austaron.com.au