

**staron®** **evermoin®**  
Solid Surfaces



**Antimicrobial Staron® Solid Surface  
Advanced Solution for Healthcare**

[austaronsurfaces.com](http://austaronsurfaces.com)



Staron® clad to hospital staircase partition and wall.

## ABOUT Staron® Solid Surfaces

Staron® Solid Surfaces is comprised of a natural and pure mineral derived from bauxite ore and blended with an advanced pure acrylic resin, resulting in a premium surface material. Staron® Solid Surfaces is suitable for endless applications in a commercial or residential project. With a smooth finish and a range of over 80 colours to select from, Staron® is both aesthetically and functionally pleasing. Staron® offers a warm, soft and soothing feel to the skin. It does not feel 'cold' like many other surfaces do. Staron® also offers a hygienic finish that abolishes cross contamination, perfect for dental surgeries, hospitals and aged care facilities. Staron® prevents the growth of mould or mildew, providing a clean surface solution.

The thermoformability of Staron® allows for designs of ergonomically friendly applications for wheelchair access. The non-porous and slip resistant nature of Staron® also means it can be used in and around showers and bathtubs by creating curves for easy access. The smooth nature of Staron® adds heightened hygiene and eliminates dirt trapping crevices, that is essential in this type of industry.

Staron® also extends itself to fully integrated dentistry bowls, baby baths or sinks and vanities - with no open joins, just one continuous surface. Create monolithic wall surfaces, toilet partitions, food preparation kitchenettes and nurses stations - the possibilities are endless. Staron® is renewable, meaning that after years of use it can be sanded to be restored back to its original condition. Staron® can be formed and moulded into any shape or design imaginable. It can be sculpted to fit around curves or be carved into logos, designs or sculptures.

Staron® can be inlaid, creating a blend of colours into one piece. The flexibility of Staron® extends to limitless edge profiles; drop down edges, and splash backs. All this comes in an environmentally sustainable material, with a 10 Year Warranty.

## ABOUT Evermoin® by Staron® Solid Surfaces

Evermoin® by Staron® is an ideal surface solution for applications that are exposed to sensitive people and/or animals such as the sick, elderly or children. It provides the hygiene and design versatility of Staron® with a bacteria killing, antibacterial inclusion. Standard Staron® suppresses fungal and bacteria due to its non-porous nature, while Staron® Evermoin® **actively kills** bacteria. Evermoin® anti-microbial surfaces from Staron® can be used in almost any interior space. Imagine nurses workstations and wall cladding in a functional and renewable material that is durable as well as ultra-hygienic. Achieve the perfect blend of simplicity in design with an anti-microbial surface engineered for a healthier life.

## ABOUT Austaron Surfaces

Austaron Surfaces are the proud distributors of Staron® Solid Surfaces. Austaron Surfaces was established with an aim to provide quality surfaces and finishes to the Australian market. Austaron's product range is utilised by designers, architects, retailers, builders and also extends to consumers. Our products are used across many industry segments including but not limited to: retail, healthcare, entertainment, food service, office fit-outs, residential and many commercial projects. With an industry experienced sales team based in all states of the country, the business works together with project managers and designers on projects from the specification stage, all the way through to delivery of the product. For more information on Austaron Surfaces and their product portfolio, visit: [www.austaronsurfaces.com](http://www.austaronsurfaces.com)

# Benefits of Staron® Evermoin®



Speedy antibacterial effect and action against bacteria and fungi.

Excellent antimicrobial retention, quality stability and durability.

Harmless to the human body and environment (certified by EPA, NSF, FDA).



Staron® wall cladding.  
Design by: GHD Architects.  
Project: Adelaide Women's and Children's Hospital, Adelaide.



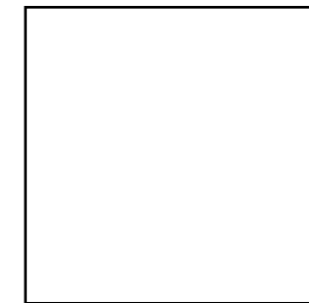
## Staron® Evermoin® Product Detail

Dimension:

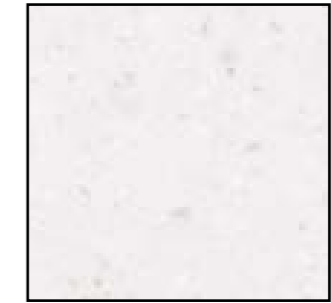
W.3680 x L.760 x 12 [mm]

W.2500 x L.760 x 6 [mm] *available by special order*

Please discuss the possibility of using Staron® Evermoin® in your next project with your Austaron representative.



Colour: Ultra Bright



Colour: Limpio

The design versatility of Staron® means that limitless edge profile thicknesses and designs can be fabricated monolithically from a 12mm sheet. The joining capabilities also create smooth, wide and long surfaces with no open joints - just one continuous surface that looks and performs as one piece of solid surface.



Staron® benchtop in nurses station.  
Design by: Silver Thomas Hanley.  
Project: Sunshine Hospital, Melbourne.

# Staron® Evermoin® Certifications



EPA  
US Environmental  
Protection Agency



NSF  
National Sanitation  
Foundation



FDA  
US Food & Drug  
Administration



Dental bowls in Staron® continue to benchtops and splashback.

# Staron® Evermoin® Safety Properties

## ASTM E 2180 (Bacteria Test)

Exposed a testing piece to bacteria for 24 hours (provided nutrient) > killed 99.9% of bacteria.

		Blank	Evermoin®	Note
Staphylococcus aureus ATCC 6538	"0" h control	3.0x10 <sup>6</sup>	3.0x10 <sup>6</sup>	Sample surface area: (3x3)cm  Inoculum volume: 0.5 mL  Neutralizing broth : 0.2% POLYSOBATE 80
	After 24 h	2.8x10 <sup>6</sup>	2.5x10 <sup>4</sup>	
	Percent reduction of Bacteria	-	99.1%	
Klebsiella pneumoniae ATCC 4352	"0" h control	2.0x10 <sup>6</sup>	2.0x10 <sup>6</sup>	
	After 24 h	3.5x10 <sup>7</sup>	8.7x10 <sup>2</sup>	
	Percent reduction of Bacteria	-	99.9%	

## ISO 846 [B'] (Antifungal test)

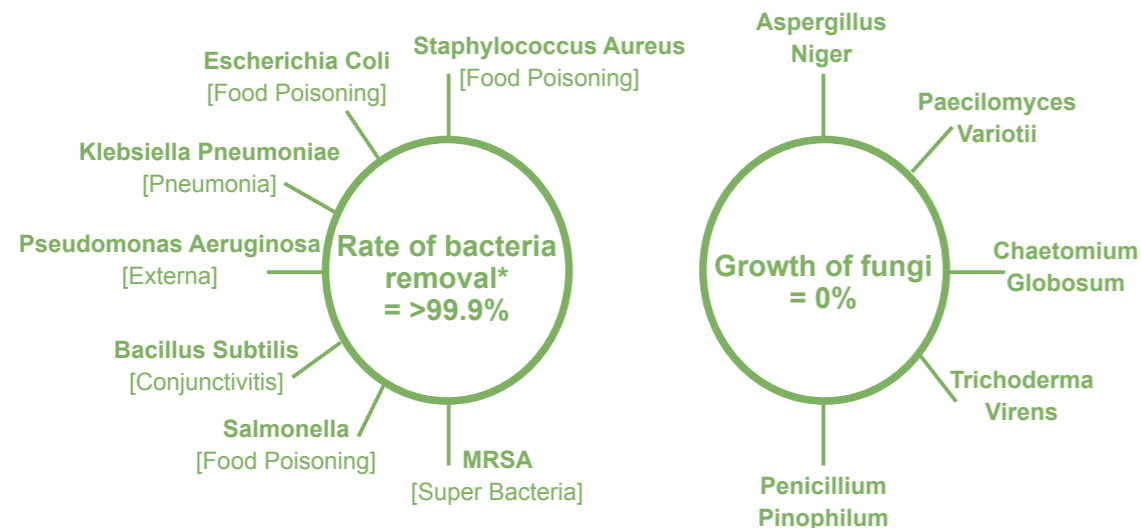
Obtained with SGS EN ISO 846 B' fungistatic effect grade 0.

Test Method	Test Condition	Result	Organisation
ISO 846 B'	Incubation at 30°C for 4 weeks	<b>Strong fungistatic effect: 0</b>	SGS

Intensity of growth	Evaluation of the behaviour growth
0	No growth apparent under the microscope.
1	No Growth visible to the naked eye, but clearly visible under the microscope.
2	Growth visible to the naked eye, covering up to 25% of the test surface.
3	Growth visible to the naked eye, covering up to 50% of the test surface.
4	Considerable growth, covering more than 50% of the surface.
5	Heavy growth, covering the entire test surface.

Staron® Evermoin® has fast antimicrobial activity to the most common bacteria.

\*The bacteria removal rate >99.9% means the number of bacteria is reduced from 10 million to 10,000.



## FDA 21 CFR 177 (Human safety Test)

Complying with 21 CFR 177.1010 of U.S. FDA (Food and Drug Administration).

Test Results	Conclusion
a) Total Nonvolatile Extractives	PASS
b) Potassium Permanganate Oxidizable Extractives	PASS
c) Ultraviolet-absorbing Extractives	PASS

Extractants	Test Condition	Result (mg/inch <sup>2</sup> ) 1	Reporting Limit (mg/inch <sup>2</sup> )	Permissible Limit (mg/inch <sup>2</sup> )
Distilled Water	120oF for 24 hours	0.16	PASS	PASS
8% Alcohol	120oF for 24 hours	0.15	PASS	PASS
N-Heptane	70oF for 30 minutes	0.06	PASS	PASS
Comment	-	PASS	-	-



**staron**<sup>®</sup>  
Solid Surfaces

**evermoin**<sup>®</sup>  
More Innovation, More Integration

**Austaron Pty Ltd**  
Ph: 02 9822 7055  
sales@austaron.com.au  
austaronsurfaces.com

<u>Specifications</u>	<u>State</u>	<u>Trade</u>
0439 446 986	<b>Sydney</b>	0417 417 624
0439 446 986	<b>Newcastle</b>	0417 417 624
0455 666 816	<b>NSW</b>	0455 666 816
0455 666 816	<b>ACT</b>	0455 666 816
0407 842 037	<b>VIC</b>	0403 287 597
0417 189 121	<b>WA</b>	0417 189 121
0407 617 040	<b>SA</b>	0407 617 040
0419 779 173	<b>Brisbane South</b>	0419 779 173
0414 481 319	<b>Brisbane North</b>	0414 481 319
0414 481 319	<b>F.N.Q.</b>	0428 267 685
0414 481 319	<b>NT</b>	0428 267 685
0438 216 606	<b>TASMANIA</b>	0438 216 606

## **AUSTARON** *SURFACES*

Proud distributors of:

**staron**<sup>®</sup>  
Solid Surfaces

MARIO ROMANO WALLS

**Kaynemaile**<sup>®</sup>   
Architectural Mesh

a c r y l i c  
c o u t u r e

**austaronsurfaces.com**