

Characteristics of Colors with Large Chips

The technical bulletin is provided to assist fabrication with Certain Staron® products with large chips. While basic fabrication remains the same as with other Staron® color families, the particulates that define the unique patterns in the large Chip series may require additional fabrication guideline as below.

Color List

Mosaic

Mosaic Dalmatian Mosaic BlackBean Mosaic Nimbus

Earthen

Earthen Bark Earthen Stratum

Terrazzo

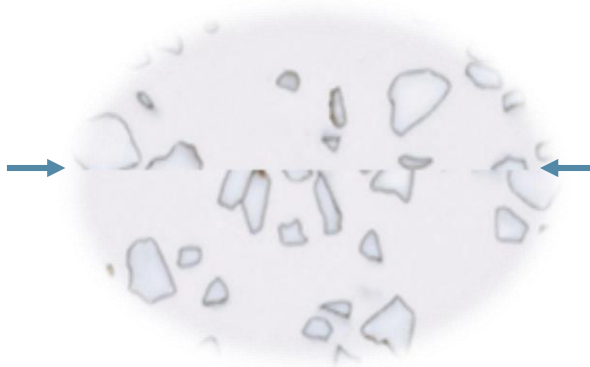
Terrazzo Venezia Terrazzo Como

Thermoforming

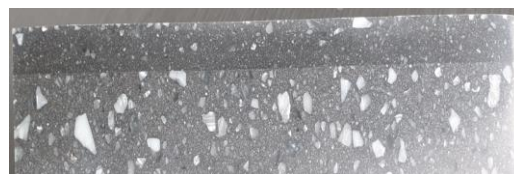
Simply, thermoforming is not recommended with the large chip series since its unique particulates may result in popped chips or cracks.

Edge Buildups

Using drop edge and stacked edge noticeably shows the artificial seams between the edge of the top and the face of the buildup due to large chips cut and the distribution of chips on each surface.
(Using the V-groove method is recommended for invisible seam line)



[seam line _ Mosaic Dalmatian]



[Drop edge _ Terrazzo Como]



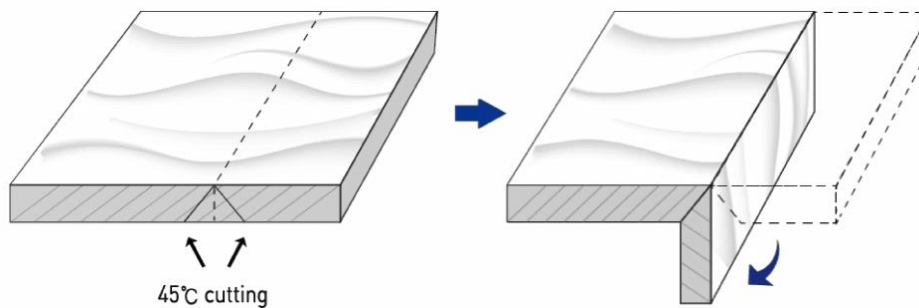
[3ply stacked edge _ Terrazzo Como]

This Technical Bulletin is intended to provide guidelines for optimal fabrication, installation, and performance of Lotte Chemical Corp. products mentioned. Though the information contained herein is deemed reliable, none of the contents--including but not limited to the instructions, techniques, graphics, and recommendations--is to be understood as implying legal liability of fitness for a specific purpose, any other type of warranty, or being complete or absolute in its range and nature of information.

Depending on the user's particular application, all necessary measures must be taken to verify and test the adequacy for such needs or application. Any information or recommendation herein is strictly for purposes of reference and as such, Lotte Chemical Corp. assumes no responsibility for its suitability or accuracy or the use of such information for products other than Lotte Chemical Corp. Staron® solid surfaces & Radianz® quartz surfaces.

Recommended Fabrication

The recommended edge build-up method is a 45 degree V-grooving edges build-up.



Chip appearance (Earthen Series)

Due to the nature of transmittance difference in chips, the finish on chips may look different from the overall finish of the countertop in certain viewing angles. Please note that such appearance is a general characteristic of the product and has no affect on performance or quality of the product.



This Technical Bulletin is intended to provide guidelines for optimal fabrication, installation, and performance of Lotte Chemical Corp. products mentioned. Though the information contained herein is deemed reliable, none of the contents--including but not limited to the instructions, techniques, graphics, and recommendations--is to be understood as implying legal liability of fitness for a specific purpose, any other type of warranty, or being complete or absolute in its range and nature of information.

Depending on the user's particular application, all necessary measures must be taken to verify and test the adequacy for such needs or application. Any information or recommendation herein is strictly for purposes of reference and as such, Lotte Chemical Corp. assumes no responsibility for its suitability or accuracy or the use of such information for products other than Lotte Chemical Corp. Staron® solid surfaces & Radianz® quartz surfaces.