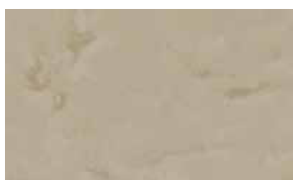
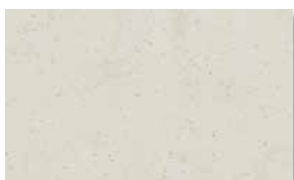
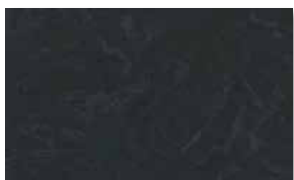
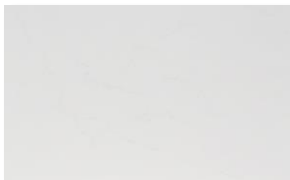
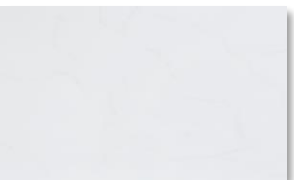
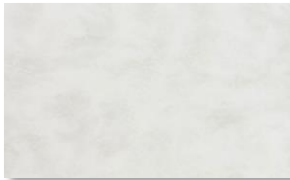
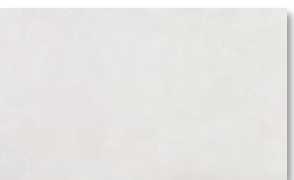
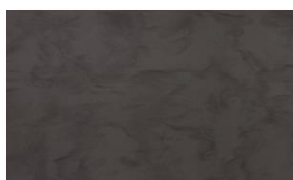


ABOUT SUPREME

Move the sander North-South and East-West making sure to overlap half the pad diameter – Always clean the entire top with a damp cloth and air-dry, or dry with paper towels, before going to the next steps. Remove residual sanding dust/build-up from Micron sanding media regularly during the sanding process

COLOR LIST

Delphi **VD111**Cloudbank **VC118**Magnolia **VM143**Ocean View **VO171**Pastoral **VP177**Natural Bridge **VN144**Dandelion **VD175**Dawn **VD126**Loam **VL155**Presto **VP159**Beige Granite **VB172**Urban Grey **Vu127**Cotton White **VC110**Morning Sky **VM114**Reno **VR184**Rainier **VR173**Elbert **VE111**Flux **VF113**Tranquil **VT115**Ash Concrete **VA129**Noir Concrete **VN180**

CHARACTERISTICS OF SUPREME

• Color and pattern

Supreme has a flow pattern like natural marble, which is randomly distributed through the sheet. The appearance of actual installation depending on different layout and assembly techniques may differ from image in the marketing literature and sample piece that are intended to be average representations of the product. Therefore, please explain to customers thoroughly about the characteristic of pattern on Supreme and potential difference from sample. Also, a fabricator needs to make sure to properly measure the amount of material needed with consideration to minimize inconsistency on seaming.



Front side (Color : Ocean View)



Back side (Color : Ocean View)

• Sanding

Supreme can be sanded by the same method as with other Staron color families. Since a matte finish is easy to maintain or restore by a home owner's hand, a matte finish might be recommended on light to medium color. Some of the medium to dark colors do not look as good with a matte finish. You may consider in supplying a semi or high gloss finish if a customer understands and agrees with the characteristics of dark colors, gloss finishes, and maintenance requirements; dark colors in countertop surfaces, and particularly dark colors that have been finished to a semi or high gloss, like anything else, will potentially show scratches or abrasion marks more readily than a lighter colored one. Therefore, dark colored surfaces and high gloss finishes generally require additional care and maintenance to retain its original shine and may not always be appropriate for a high use area.

• Thermoforming

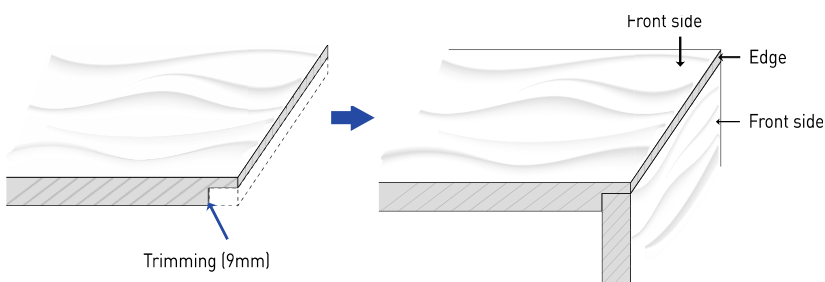
Supreme can be thermoformed as the same method applied on other Staron color families. The minimum allowable R value of the thermoforming must be determined by the chip size contained in the sheet of Supreme. Please refer to the recommended guideline for the detailed thermoforming and the minimum R value by color.

Fabrication recommendation

1) Front edge processing

While the drop and stacked edge are considered the most flexible method for fabrication process, it is recommended to use the V-grooving or drop edge build-up with a rabbet (9mm or greater) along the edge to minimize visible seams at the edge build-up.

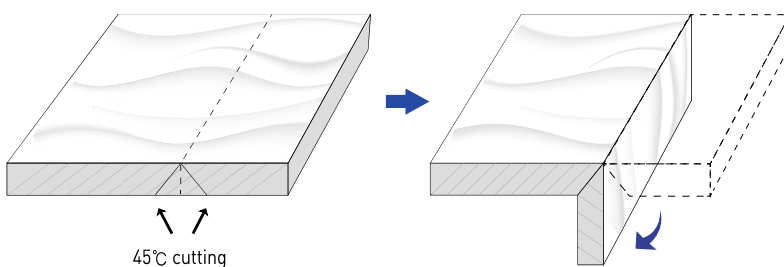
▷ Rabbet and drop edge



Rabbet & drop edge (Color : Dandelion)

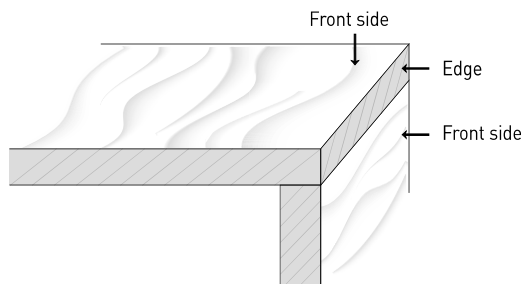
※ Clamping trimmed area with too much pressure may cause breakage. Using protection block on clamping is recommended.

▷ V-grooving



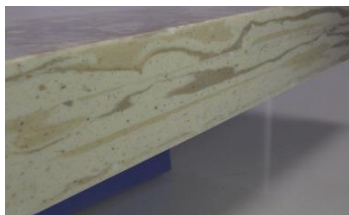
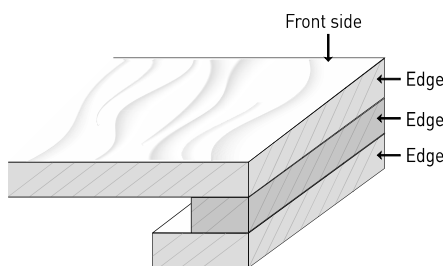
V-grooving (Color : Ocean View)

▷ Drop edge

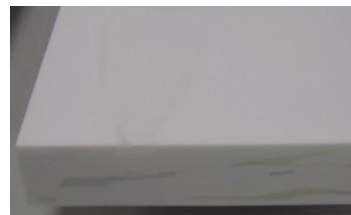


Drop edge (Color : Dandelion)

▷ 3ply (stacked edge)



3 ply (Color : Dandelion)



3 ply (Color : Delphi)

2) Backsplash

The loose backsplash is recommended for the best possible aesthetic results. The coved stack or v-grooving backsplash shown in the figure below can be considered a method to retain the pattern orientation. However, it may result in an inconsistent appearance by a reduced intensity of pattern where is rounded and trimmed.

▷ Loose backsplash

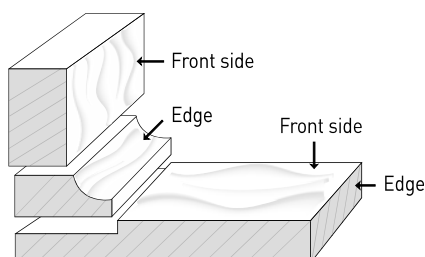


Loose (Color : Ocean View)



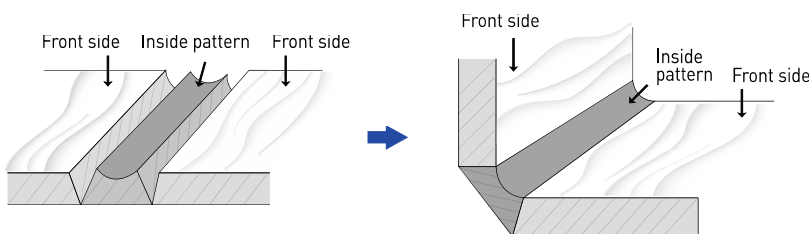
Loose (Color : Dandelion)

▷ Coved stack backsplash



Coved stack (Color : Natural Bridge)

▷ V-grooving backsplash



V-grooving backsplash (Color : Ocean View)

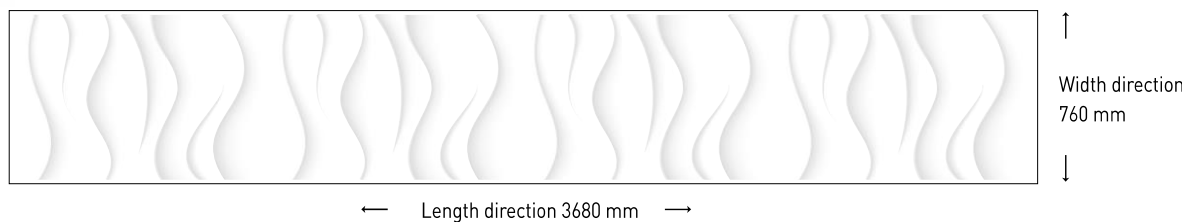
Remark ;

In case of Supreme, since the Pattern of the inside is very different from the face side, following certain fabrication methods are not recommendable.

- ▷ Front edge processing : Drop Edge, 3ply (stacked edge)
- ▷ Back splash : V-grooving backsplash, Coved stack backsplash

3) Seaming

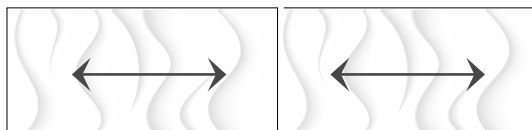
Since Supreme has random and directional pattern, a visual break in the pattern will be visible at seams. In order to minimize such phenomenon, you need to maintain specific sheet segment orientations and often require more sheet than fabrication of other Staron color families. The following graphics illustrate various methods of seaming fabrication.



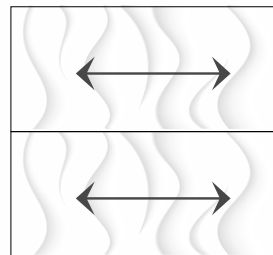
※ Flow pattern has a directional nature in the width of the sheet

▷ **END to END or SIDE to SIDE seaming (arrow indicates the length direction of the sheet)**

Seaming with material segment END to END or SIDE to SIDE with the same orientation will result in the best appearance.



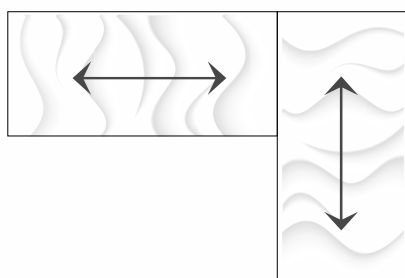
〈 END to END 〉



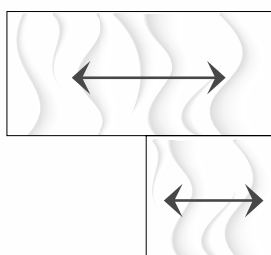
〈 SIDE to SIDE 〉

▷ **'L' Shape Counter seaming (arrow indicates the length direction of the sheet)**

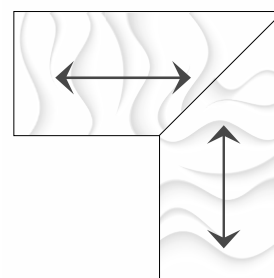
When two segments of Supreme are seamed together in 90° angle, a pattern break will be noticeable at the seam. Therefore, it is recommended to perform seaming either the SIDE to SIDE or 45° angle that will provide the best appearance.



〈 90° angle 〉



〈 SIDE to SIDE 〉



〈 45° angle 〉

▷ Actual Seaming Samples (arrow indicates the length direction of the sheet)



Seaming lines and Arrow marks (Color : Dandelion)



Without marks (Color : Dandelion)

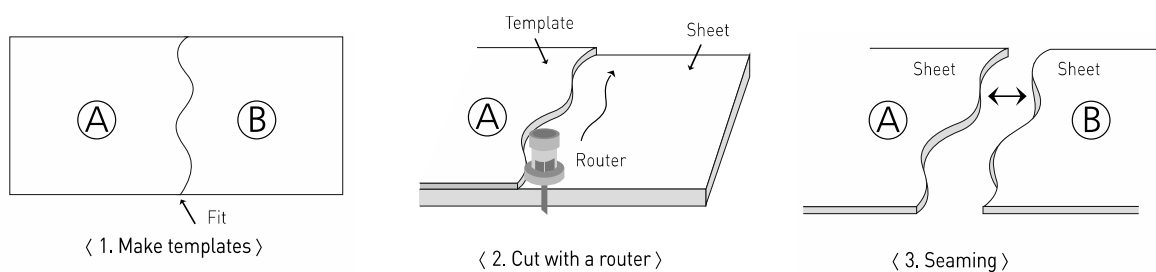


Arrow marks only (Color : Ocean view)

▷ Wave CNC cutting

If Supreme is seamed in irregular wave line by CNC cut, it will provide the most acceptable aesthetics. Make sure to program Your CNC for accurate seam. A router can be used instead of the CNC for the wave cutting. Please refer to figures below for the process..

▷ Wave Router cutting



1. Make templates

Templates are most critical steps in order to obtain an accurate fitting at seam. Make sure that template A and B fit perfectly during the cutting process, with due consideration for thickness of a router bit.

2. Cut with a router

Carefully select two segments that have a similar pattern trace together and result in the most uniform aesthetic, and cut segments accordingly to template A and B.

3. Seaming

Prior to seaming, perform the visual inspection to make sure that two segments perfectly fit each other.



Wave cutting (Color: Dandelion)

4) Thermoforming

Supreme can be thermoformed as the same method applied on other Staron color families. The oven temperature for Supreme thermoforming is recommended around 160°C for 30 minutes in a convection oven and 10 to 15 minutes in a contact oven. However, running a test on a scrap piece is highly recommended to find the best temperature and time for the oven. The allowable minimum R value for the thermoforming differs depending on the size and color of the chips (refer to the table below).

Minimum R value	Color name
76 mm	Delphi, Presto, Pastoral, Beige Granite, Urban Grey, Cotton White, Morning Sky
126 mm	Ocean View, Cloudbank, Natural Bridge, Magnolia, Dandelion, Loam, Dawn

NOTE: As 4 colors (Cotton White, Morning Sky, Delphi, Ocean View) are translucent. This translucent colors tend to change color easily during heating. Recommended thermoforming process for translucent colors is heating for 13 minutes at 160°C and do not exceed heat up time 13 minutes. (Contact oven condition)

5) Light Translucent

Some of Supreme colors (Cotton White, Morning Sky, Delphi, Ocean View) are invented for lighting application. Be note that the pattern of Supreme is vary, fabricator must check the color in lighting condition before spec in a project. For more information please refer to technical bulletin SN-321 "Characteristics of Translucent colors"



Supreme Cotton White



Supreme Morning Sky

6) Sanding and Polishing

Supreme can be sanded by the same method as with other Staron color families. Move the sander North-South and East-West making sure to overlap half the pad diameter. Always clean the entire top with a damp cloth and air-dry, or dry with paper towels, before going to the next steps. Remove residual sanding dust/build-up from sanding media regularly during the sanding process.

NOTE: As 4 colors (Cotton White, Morning Sky, beige Granite, Urban Grey) have line type of pattern on the product surface, This pattern might be removed by sanding if it is sanded over 1~2mm deep.

Care & Maintenance

Everyday Care

General cleaning of your Supreme can be done by wiping the surface with a damp cloth or sponge, then dry with soft cloth or paper towels to prevent spotting; especially in areas with hard water.

Basic Stains

Clean with an ammonia-based product such as household glass cleaner or commercially available non-abrasive spray-on cleaners for solid surface products. Wipe dry with a soft cloth or paper towels to prevent spotting.

Stubborn Stains and Minor Scratches

Generally, scrubbing in a small circular motion with a wet sponge and an abrasive cleanser such as Soft Scrub® will help clean stubborn stains and minor scratches. However, dark colors in countertop surfaces and particularly dark colors that have been finished to a gloss, like anything else, will require additional maintenance and care to retain its original luster; please try to spray a non-abrasive product such as Formula 409® over stain and wait for a couple of minutes. Then, scrub in a small circular motion with a wet sponge.

Note : please contact your certified fabricator/installer if you are uncertain which type of finish is applied to your Staron solid surfaces. DO NOT attempt to repair deep scratches, chips or burns, contact a certified Staron fabricator/installer.

Warranty

The irregular pattern on the surface and visual break in the pattern at seam of the installation should be considered the unique characteristics and aesthetics of Supreme. It is responsibility of a sales associate and fabricator to clearly advise the consumer about the characteristics of Supreme to enable the consumer to determine whether it is best suited for his/her particular project. Any damage or dissatisfaction due to such characteristics of Supreme are excluded from the Staron limited warranty.

This Technical Bulletin is intended to provide guidelines for optimal fabrication, installation, and performance of Lotte Chemical Corp. products mentioned. Though the information contained herein is deemed reliable, none of the contents--including but not limited to the instructions, techniques, graphics, and recommendations--is to be understood as implying legal liability of fitness for a specific purpose, any other type of warranty, or being complete or absolute in its range and nature of information.

Depending on the user's particular application, all necessary measures must be taken to verify and test the adequacy for such needs or application. Any information or recommendation herein is strictly for purposes of reference and as such, Lotte Chemical Corp. assumes no responsibility for its suitability or accuracy or the use of such information for products other than Lotte Chemical Corp. Staron® solid surfaces & Radianz® quartz surfaces.

