

AUSTARON SURFACES

Inspire **Imagine** Create®



Indoor and Outdoor Surfaces for All Projects

“Our surfaces allow one’s imagination to flourish; the more you learn, the more exciting designing becomes.”



Directors left to right:
Brett Worden (AU), Belinda Worden (AU), Justin Worden (NZ),
Gareth Edwards (NZ), Danie Mars (NZ)

Founded in Australia in 2003, Austaron Surfaces is a people-driven company, renowned for excellent service and an appreciation of connections made along the project journey.

With a personable enthusiasm, our team strives to support clients in their pursuit of product knowledge and assistance for a successful project outcome.

Offering a collection of high-quality surfaces, our brands are innovative and award-winning.

Locally owned and operated in Australia and New Zealand, our product range offers both visual excellence and a solution-oriented outcome to the building industry.

staron®
Solid Surfaces

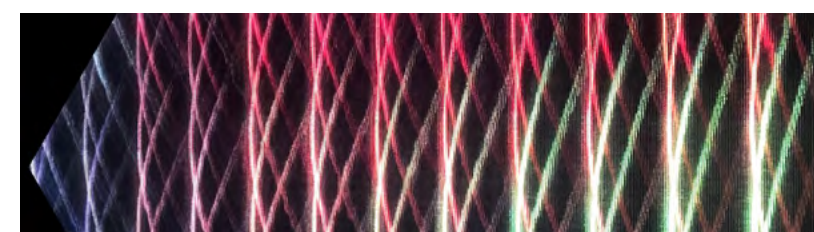
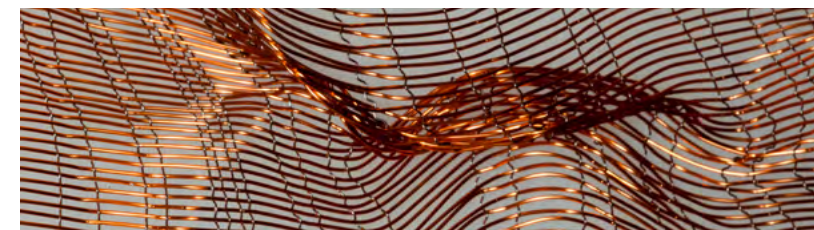
MARIO ROMANO | WALLS

a c r y l i c
c o u t u r e®

ORGANOD
NATURAL SURFACES

Kaynemaile®

ETTLIN LUX®
MADE FOR UNIQUE PROJECTS





Contents

06	Staron Solid Surfaces	14	Organoid
08	Integrated Sinks & Basins	16	Kaynemaile Architectural Mesh
09	Design Options	18	Ettlin Lux
10	Mario Romano Walls	20	Awards
12	Acrylic Couture	21	Contact Us



staron®
Solid Surfaces



Staron Solid Surfaces is manufactured from a safe natural mineral refined from bauxite and blended with pure acrylic resin. A non-porous material, Staron provides a hygienic, durable and easy to maintain surface.

Another benefit of Staron is its seamless joining capabilities, making it possible to create long and wide continuing surfaces with no open joints eliminating dirt-trapping crevices.

Staron is repairable, renewable and UV stable. Even after years of use it can simply be sanded and restored back to its original condition. Staron does not have or require any finishing polishes or sealers; it is the same solid material throughout its thickness.

Easily thermoformed into flowing curves or sculpted into any shape imaginable. Design flexibility extends to limitless edge profiles, splashbacks and tile coves. [Learn more...](#)



Made in South Korea



AU - Group 1 Fire Certificate
Result to AS5637.1
(AS ISO 9705: Full scale room test)



NZ - Group 1s Fire Certificate
Result to C/VM2
 (AS ISO 9705: Full scale room test)



Silica & Polyester Free



Hygienic & Stain Resistant



Seamless Design Flexibility



Illumination & Routing Opportunity



Colour Versatility



Weatherability & Durability



Greenguard Certified & Gold Certified



**Environmental Management
System Certified ISO 14001**



**National Sanitation Foundation
for Food Safety Certified**

Integrated Sinks & Basins

Staron Sinks

Enhance your application with an addition from our collection of integrated sinks and basins. Aesthetically pleasing and hygienic, eliminating mould and silicone. The perfect partner to a Staron benchtop in residential or commercial projects. [Learn more...](#)



Antegra Sinks

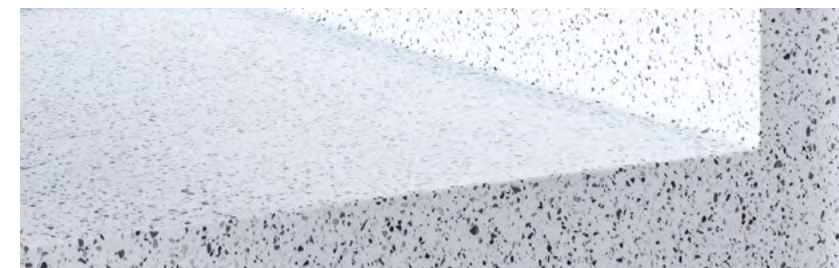
Designed to inspire and constructed specifically for solid surface. The Antegra sink collection allows for Staron to flow seamlessly from the benchtop to the internal sides of the sink, integrating the Antegra sink and Staron benchtop. [See full range...](#)



Design Options



Splashback



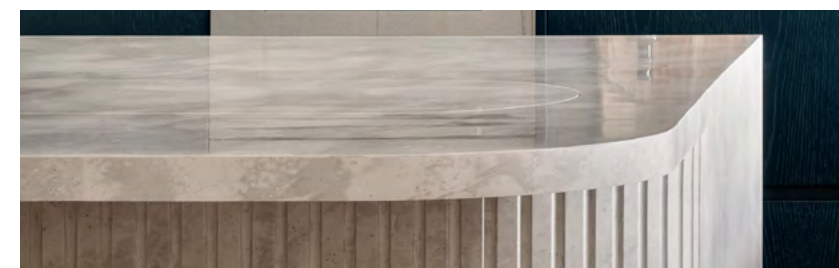
Seamless Coves and Integrated Splashbacks



Integrated Sinks and Drainers



Back Lighting



Endless Edge Profiles



Door and Drawer Front



Innovative and beautiful, Mario Romano Walls is a collection of 3-Dimensional textured panels. Non-repeating designs are available in any size, and it's infinitely customisable.

Each panel is carved and fits perfectly alongside adjoining pieces; panels slip together like a large puzzle with inconspicuous joins to achieve a seamless design for both linear and organic patterns.

All designs are routed directly in Staron Solid Surface offering the many benefits and features that solid surfaces are known for.

Selections are available from over 50 pre-designed patterns or create your own design; Mario Romano Walls are scaled to fit each bespoke outcome. Eliminating complicated CAD documentation, all files are processed in-house. Explore [our range](#) for your next project.



Processed Locally



AU - Group 1 Fire Certificate
Result to AS5637.1



NZ - Group 1s Fire Certificate
Result to C/VM2



Silica & Polyester Free



Hygienic & Stain Resistant



Seamless Design Flexibility



Illumination Opportunity



Colour Versatility



Unlimited Scale



Quick & Easy Installation



Durability



Biophilic Design



Greenguard Certified &
Gold Certified

acrylic couture®



Acrylic Couture is acrylic glass in a completely new light. Showcasing a collection of meticulously selected premium quality and ethically sourced metallic fabrics, decorative particulates and feathers encased in crystal-clear high-quality acrylic glass. Hand-crafted in Italy, designs are created of unprecedented appearance to deliver an incomparable decorative surface.

Comprised of the highest quality acrylic glass and modified with the inclusion of special nanoparticles for the extremely efficient scattering and reflection of light. The highlight for the senses is achieved through the unique lighting effects within the acrylic glass. In the presence of either natural or artificial light, this extraordinary material composition makes it possible to achieve intensely radiant visual applications. [Learn more...](#)



Made in Italy



Superior Quality



Non-Toxic



UV Resistant



Illumination Opportunity



10 Year Exterior Guarantee



30 Year Interior Guarantee



Ethically Sourced



Hand Crafted



Halogen Free



Eco Conscious
Manufacturing



Wet Area

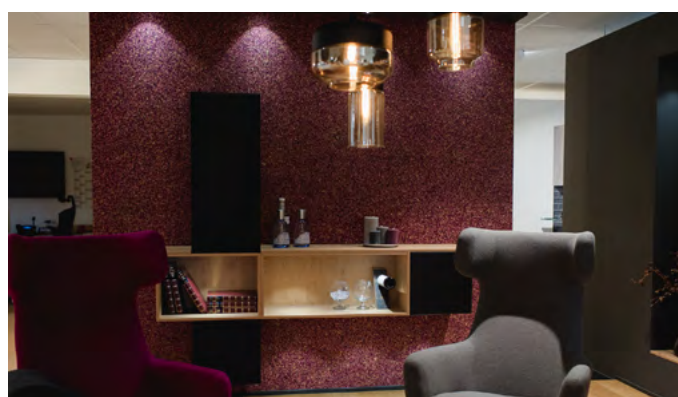







Organoid surfaces combine the beauty and effects of natural materials with functional interior design in a sustainable manner.

The natural surfaces are available in various unique designs. They are suitable for many decorating uses: as wallpapers, decorative veneers in combination with wood, and acoustic elements.

A selection of natural materials such as Alpine hay, lavender, flower petals and herbs to name a few, Organoid surfaces are pure sensory pleasures for people – you can see, feel and smell them.

Due to the gentle production process, the properties of the natural materials are largely preserved. The surface is untreated and thus all properties in terms of look, fragrance and feel are retained. [Learn more...](#)



-  Made in Austria
-  Carbon Neutral
-  FSC - Mix Paper From Responsible Sources
-  Ethically Sourced
-  Direct Trade with Farmers
-  Hand Crafted
-  Renewable Materials
-  Organic Natural Materials
-  Eco Conscious Manufacturing
-  Aromatic & Tactile
-  Biophilic Design
-  Acoustic Design Compatibility



The Kaynemaile offering is unlike any other, this state-of-the-art product is the result of 60 years worth of material science and extensive research. This one-of-a-kind material features a series of polycarbonate rings that seamlessly interlink to form a modern chainmail fabric. Strong and lightweight, Kaynemaile mesh offers endless design potential for illustrious ceiling features, elegant interior screens and it is perfectly suited for partitions and space dividers within interior applications. Manufactured from engineering grade polycarbonate, Kaynemaile Architectural Mesh is so durable it can also provide screening and building protection for exterior project applications. [Learn more...](#)



Made in New Zealand



Group 1s Fire Certificate Result to ISO9705 Room Test



High Airflow



Quick & Easy Installation



70% Solar Reduction



Weatherability



Unlimited Size & Scale



Eco Conscious Manufacturing



Extremely Strong



Durability



Corrosion Free



Lightweight

Ambiloom®



ETTLIN LUX is a worldwide, unique, and patented textile that creates three-dimensional light lines from light sources placed behind the fabric. Ettlun Lux products represent a fascinating combination of aesthetics and lighting design. The special fabric is used in a variety of ways, from individual projects to ready-to-use products.

Ettlun Lux products have always intrigued its viewers and are made for unique projects. As a leading manufacturer of technical textiles, the team at Ettlun Lux are committed to researching and developing new products. Exploring new fields of application for their textiles with great innovative strength, adding exciting opportunity for lighting design. [Learn more...](#)



Pendant and Floor Lamp

The pendant lamp impresses with its textile surface, functional downlight and ambient lighting effect. Noble and subtle, the luminaire will appear even without the inclusion of a light bulb and harmoniously blends into various interiors. The ambient lighting makes the luminaire a distinctive element for any room. Handmade in Europe, the luminaire range is available in Black, Brass, Chrome and Timber.

Wall Mirror

The Ambiloom wall mirrors from ETTLIN LUX impress with three-dimensional, luminous effects in the mirror image. They provide a highlight in interior design and give interior architects and designers the opportunity to visually enhance their projects. Thanks to the modern design, the mirrors fit into the largest variety of room concepts. The multi-purpose accessory presents as a functional mirror, decorative mural and ambient lighting object for a feel-good atmosphere.

Awards

It's not just us that think our products are amazing. Our brands have been recognised for excellence in design, quality and innovation.



Staron Design Awards

With the unique attributes solid surface offers for the adaption to a multitude of design outcomes; the awards offer a platform for the architecture & design community to be celebrated for knowledge and ability to showcase Staron Solid Surfaces within the built environment. The awards are open to commercial and residential projects within Australia and New Zealand. In addition, a concept category is in place to embrace creative thinking for solid surface outside of “real life” projects. [Learn more...](#)

Photo Credits:

Front Cover

Kitchen Design Award of the Year
Bayview One, Designed by Darren James Interiors

Page 4

Frankston Private Hospital, Designed by Francene O'Connor, Silver Thomas Hanley
Photographed by Paolo Cappelli

Mario Romano Walls Hallway Cabinets,
Designed by MKN Kitchen

Page 6

Commercial Winner, MoMa Group, Victoria
Kitchen Designed by Studio Minosa

Kro Bakery, Praha, Designed by NEUHAUSL
HUNAL, Photographed by R. Ulehla

Staron Design Awards Winner Designed by
Lee Hardcastle, Enigma Interiors

Staron Design Awards Winner
Ashley Maddison - AM Interior Studio

Page 7

Staron Design Awards Winner
Kitchen Designed by Tania Kloester, TK Design

Page 8

Little Riley Street, Designed by Think Dzine

Page 9

Staron Design Awards Winner
Ocean View, Designed & Concepts by
Gavin Hepper

Page 10

Kitchen Designed by Kate Anderson

Page 13

Mount Nebo, Designed by Kim Duffin

Page 14

WILDSPITZE / Genussladen 24-7, Stadtmart
Lienz © Photographed by Studio20four

SKELETTBLATTA © Hotel Linde, Ried

Organoid Natural Surfaces ALMWIESN,
Liberty's London © Liberty's London

ROASNBLIATN Organoid Natural Surfaces ©
Photographed by MiHo-Photography

Page 21

Kitchen Designed by Ashley Maddison,
AM Interior Studio

Page 22

Hilary Ward - Urban Kitchens, Think Dzine,
Malbo Showroom, Italy



Got a Project to Discuss? Contact **Austaron Surfaces**
and Connect with One of Our Team Today!



AUSTARON SURFACES

Inspire **Imagine** Create®



staron®
Solid Surfaces

MARIO
ROMANO

WALLS

acrylic
couture®

ORGANOD
NATURAL SURFACES

Kaynemaile®
Architectural Mesh

ETTLINLUX®
MADE FOR UNIQUE PROJECTS