

AUSTARON SURFACES

Inspire **Imagine** Create™



THE HOSPITALITY
& RETAIL EDIT



Silica free
Polyester free

staron[®]

Solid Surfaces

by **AUSTARON**
SURFACES

Manufactured from a Silica-free mineral that is blended with premium acrylic resin, the non-porous nature of Staron[®] means that no stain is ever permanent, providing a durable surface that is hygienic and easy to clean. Delivering a high-strength surface and inconspicuous joining method that eliminates dirt-trapping crevices.

Staron is repairable, renewable and UV stable. Even after years of use it can simply be sanded and restored back to its original condition. Staron does not have or require any finishing polishes or sealers; it is the same solid material throughout its thickness.

Staron is a premium Silica-free solid surface offering an abundance of design potential to the building industry. Staron Solid Surfaces are Group 1 Fire rated to AS5637.1 (AUS) & Group 1S Fire rated to C/VM2 (NZ).



Made in South Korea



AU - Group 1 Fire Certificate
Result to AS5637.1
(AS ISO 9705: Full scale room test)



NZ - Group 1s Fire Certificate
Result to C/VM2
(AS ISO 9705: Full scale room test)



Silica & Polyester Free



Hygienic & Stain Resistant



Seamless Design Flexibility



Illumination & Routing
Opportunity



Colour Versatility



Weatherability & Durability



Greenguard Certified
& Gold Certified



Environmental Management
System Certified ISO 14001



National Sanitation Foundation
for Food Safety Certified



THE RILEY HOTEL

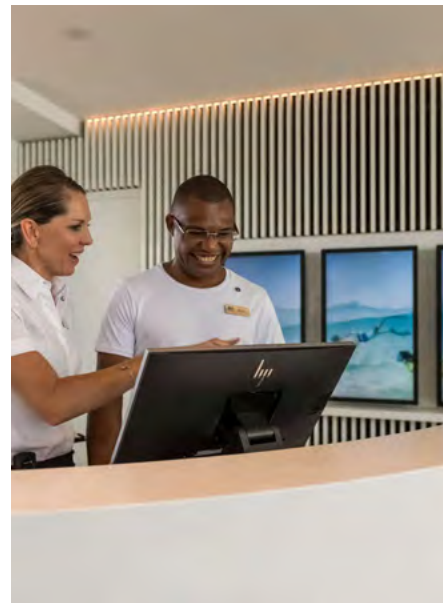
The Crystalbrook Collection's flagship Riley Hotel was the first of the new luxury destinations built in Cairns.

Blending beach-themed interiors with a tropical esplanade location, the foyer of Riley has been designed to reflect the beauty of its surroundings without obstructing the direct views of the esplanade foreshore.

Staron cladding was chosen for its superior finish and ability to seamlessly mould into elliptical shapes for the existing columns. This elliptical design is a

key element of the foyer, drawing the eye over the pool and out to the esplanade.

The reception counters were also created with Staron Supreme Delphi to emulate the curves of the columns and custom planter boxes. Easy to clean and durable, Staron proved to be the perfect material for this high-traffic area, offering a low-maintenance, high-end finish.



“Staron cladding was chosen for its superior finish.”

FEATURED:



SUPREME DELPHI
(DISCONTINUED)

SUPREME DOWNY WHITE
(ALTERNATIVE)



DESIGNER: THOMSON ADSETT ARCHITECTS

staron[®]
Solid Surfaces

WHAT WE LOVE

Silica free
Polyester free



1. ARTISTIC CREATIONS:

The composition of Staron makes it extremely versatile, a homogeneous material that can be cut or routed that only requires sanding. With no sealers or painting necessary it provides a streamlined process.

2. SUPERIOR SEATING:

Staron's durability makes it an excellent surface for custom seating, able to withstand the consistent cleaning requirements associated within food related retail environments.

3. SEAMLESS MONOLITHIC JOINERY:

Fully clad applications ensure easy cleaning. Staron's joining capabilities enable large monolithic applications, seamlessly integrating doors, drawers, and more.

4. ACHIEVE ULTIMATE DESIGN:

The seamless design capabilities of Staron make working around obstacles effortless. It flows easily around columns and can be carved for fluting and other detailed designs, maximising design freedom.

5. LET THERE BE LIGHT:

Staron's collection of translucent designs adapts beautifully to lighting applications. It is perfect for incorporating into joinery detail or creating bespoke lighting features.

6. EXCEPTIONAL CURVES

The playdough of surfaces, Staron's malleability makes it ideal for adapting to complex curves as well as long, sweeping curves.

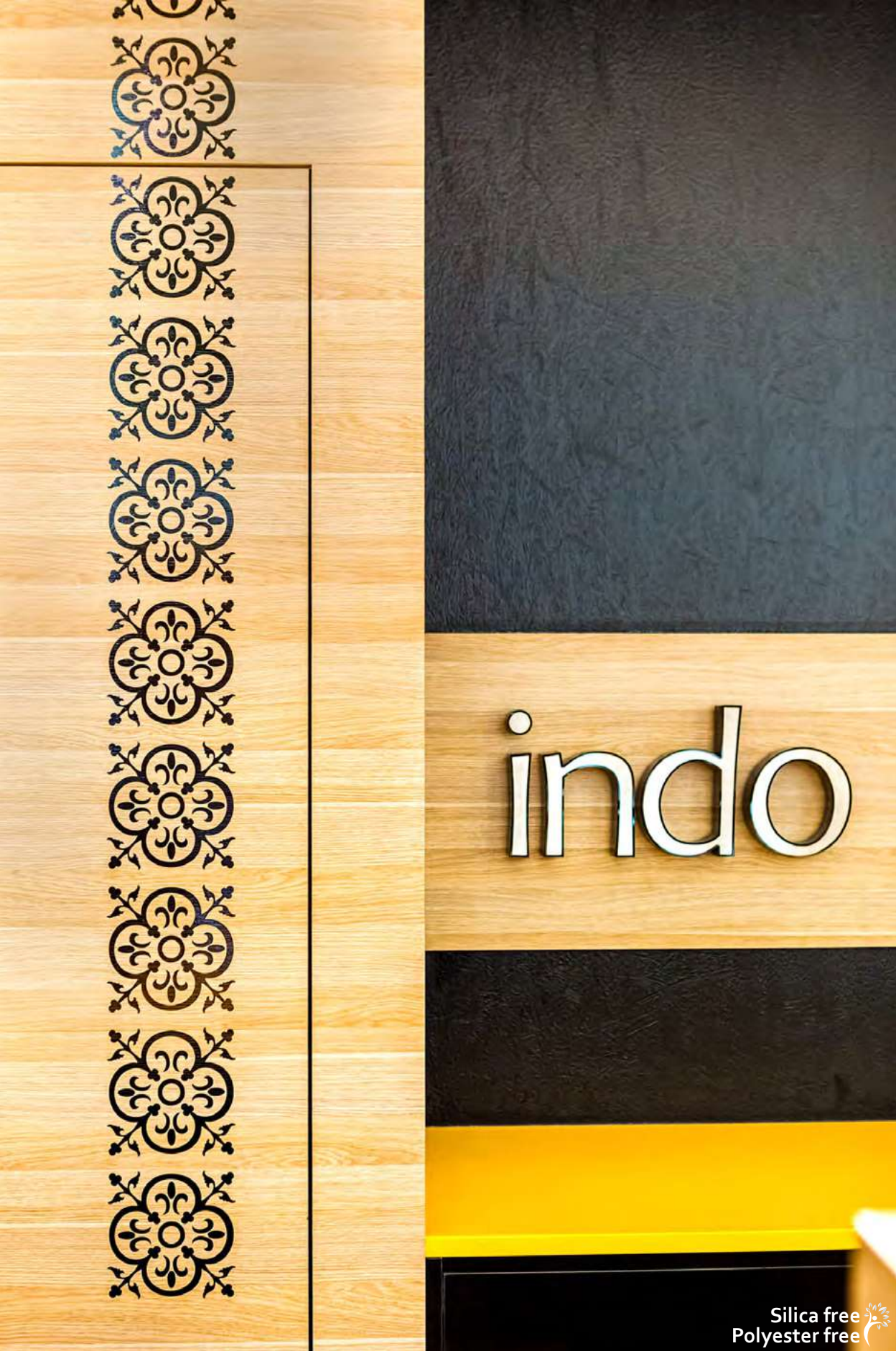


staron®
Solid Surfaces

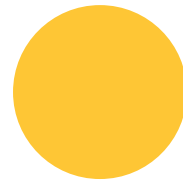
7. INDOOR & OUTDOOR APPLICATIONS:

Staron offers versatile design possibilities for both indoor and outdoor use. UV-resistant and impervious to water, it requires low maintenance. The ability to renew the surface extends its lifespan.

EVERY SURFACE TELLS A STORY



FEATURED:



SUNFLOWER

INDO CAFE

Standing out from the crowd, Indo Café catches the eye with its striking motif details throughout the fit-out.

The bold colours of Staron Solid Surfaces Sunflower pairs perfectly with black and timber elements, creating an inviting and playful atmosphere in the food court.

Staron's properties have enabled the construction of an oversized and curved service counter.

Thanks to its ability to form seamless joints onsite, this large counter was easily achieved. The repeating pattern, routed 3mm into the Staron and painted in gloss black, adds a unique point of difference.

“Among the new 17 food outlets, Indo Café clearly outshines the rest.”



DESIGNER: DUNE DESIGN FOR RORK PROJECTS

staron®
Solid Surfaces

Silica free
Polyester free

MARIO ROMANO | WALLS

by **AUSTARON**
SURFACES



Processed Locally



AU - Group 1 Fire Certificate
Result to AS5637.1
(AS ISO 9705: Full scale room test)



NZ - Group 1s Fire Certificate
Result to C/VM2
(AS ISO 9705: Full scale room test)



Silica & Polyester Free



Hygienic & Stain Resistant



Seamless Design Flexibility



Illumination & Routing
Opportunity



Colour Versatility



Unlimited Scale



Quick & Easy Installation



Durability



Biophilic Design



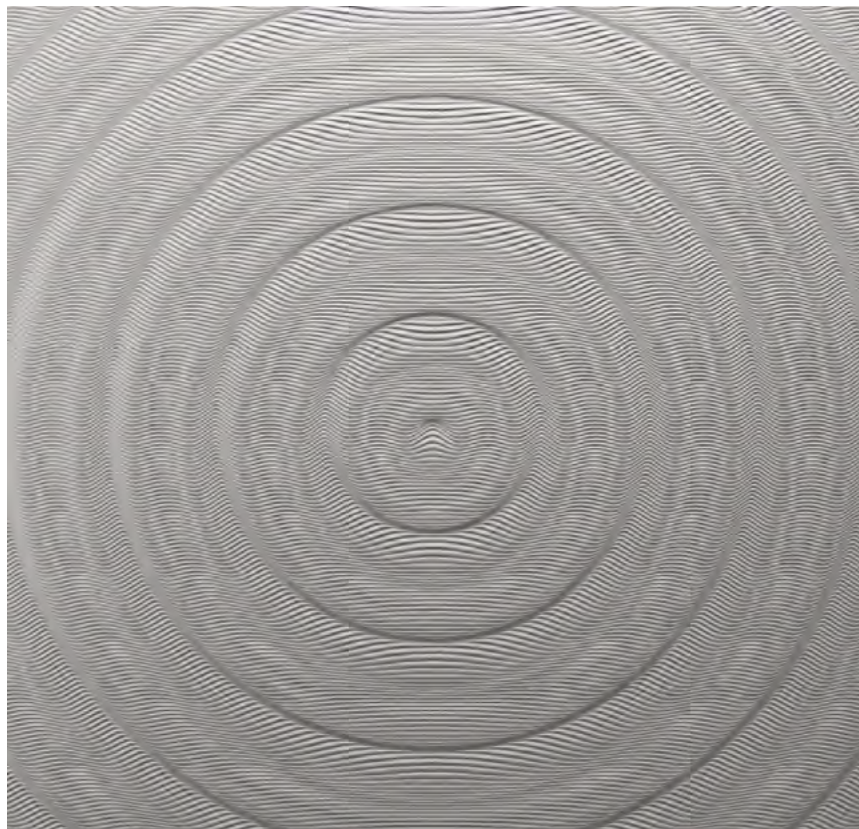
Greenguard Certified
& Gold Certified

Add tactile and visual texture to interior & exterior spaces with Mario Romano Walls (MR Walls). With a large collection of artistic designs to select from, it's easy to create feature walls and joinery with MR Walls. Being a low-maintenance, grout-free, non-porous application. MR Walls is an excellent alternative to tiles.

A bespoke outcome for each application - designs are created to the required dimension and joined together like a puzzle piece. the unique joining method offers unlimited scale and flexibility. It is simple to install and suitable for backlighting & curves can also be achieved.

Choose from 40+ designs or create a custom pattern.

All designs are carved into Staron Solid Surfaces.



Silica free
Polyester free



Inspire **Imagine** Create™



FROM INSPIRATION TO CREATION

Mario Romano Walls are three-dimensional panels that can be produced in an unlimited scale of non-repeating designs.

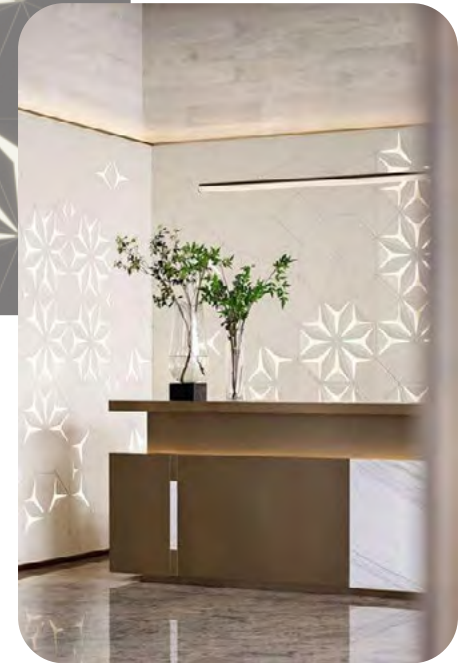
The panels are only produced when required and routed project-specific. Working with the team from Mario Romano Walls, we provide assistance to detail and document projects. All design work achieves an exact fit for each project's specific requirements. We produce shop drawings and can also offer renders to assist when necessary.

Designs can be manipulated to cater for obstacles and can be tweaked for more specific requirements. Patterns can have borders around them or flow all the way to the edge.

Designers can work with existing design files, or we can assist with custom designs, signage and more. Two-dimensional files are also available to cater for traditional style patterns like herringbone, chevron and subway designs.

Once produced the panels are easy to install and can be used in many various outcomes. They are routed using a V cutter for deeper texture or a Ball cutter to produce soft shallow texture.

Routed into Staron they are durable easy to clean and are Group 1 Fire rated to AS5637.1 (AUS) & Group 1S Fire rated to C/VM2 (NZ).



MARIO
ROMANO

WALLS



WAGON WHEEL HOTEL

Fabric Architecture found the perfect fit for enhancing the Wagon Wheel Hotel in St Marys with Mario Romano Walls. Selecting the design Origami Large it was routed into Staron Bright White, a durable and easy-to-clean surface.

The design was routed into the panels using a ball cutter, providing a soft silky textured surface. Utilising Mario Romano's meticulous design process, the details were tailored specifically for the bar splashback and reception area. The ability to be able to curve the Origami panels made it possible to achieve the desired detail elements.

With warm timbers and deep tones used in the flooring and walls, the Gold Ceiling feature and Mario Romano Walls joinery pair well together and add impact to the space. Mario Romano Walls and the ceiling features both offering warmth and ambient lighting to the bar and lounge area, providing a cozy and inviting atmosphere.



FEATURED:



ORIGAMI LARGE

MARIO
ROMANO

WALLS

CREMA ESPRESSO

This café fit-out had to match the premium brand of Crema Espresso, as well as the other high-calibre brands within the complex including David Jones, Chanel and Apple.

The open plan position of the café required that the colour palette and finishes be subtle and neutral to reflect the quality of the kiosk.

Curved Staron in Bright White has been clad around the perimeter of the café and extended to the takeaway seating, central island banquette seating and bench.

The Crema Espresso logo has also been routed directly into the Staron. The crisp white Staron contrasts with the bright red and charcoal seating and menus.

Polished stainless steel lettering with the Crema Espresso name contrasts beautifully with the bright crispness of the Staron.



DESIGNER: RETAIL DESIGN LAB



staron®
Solid Surfaces

FEATURED:
BRIGHT WHITE

“Elegant & understated, this innovative project provides a quality finish to reflect the brand, which has a subtle & inviting feel.”

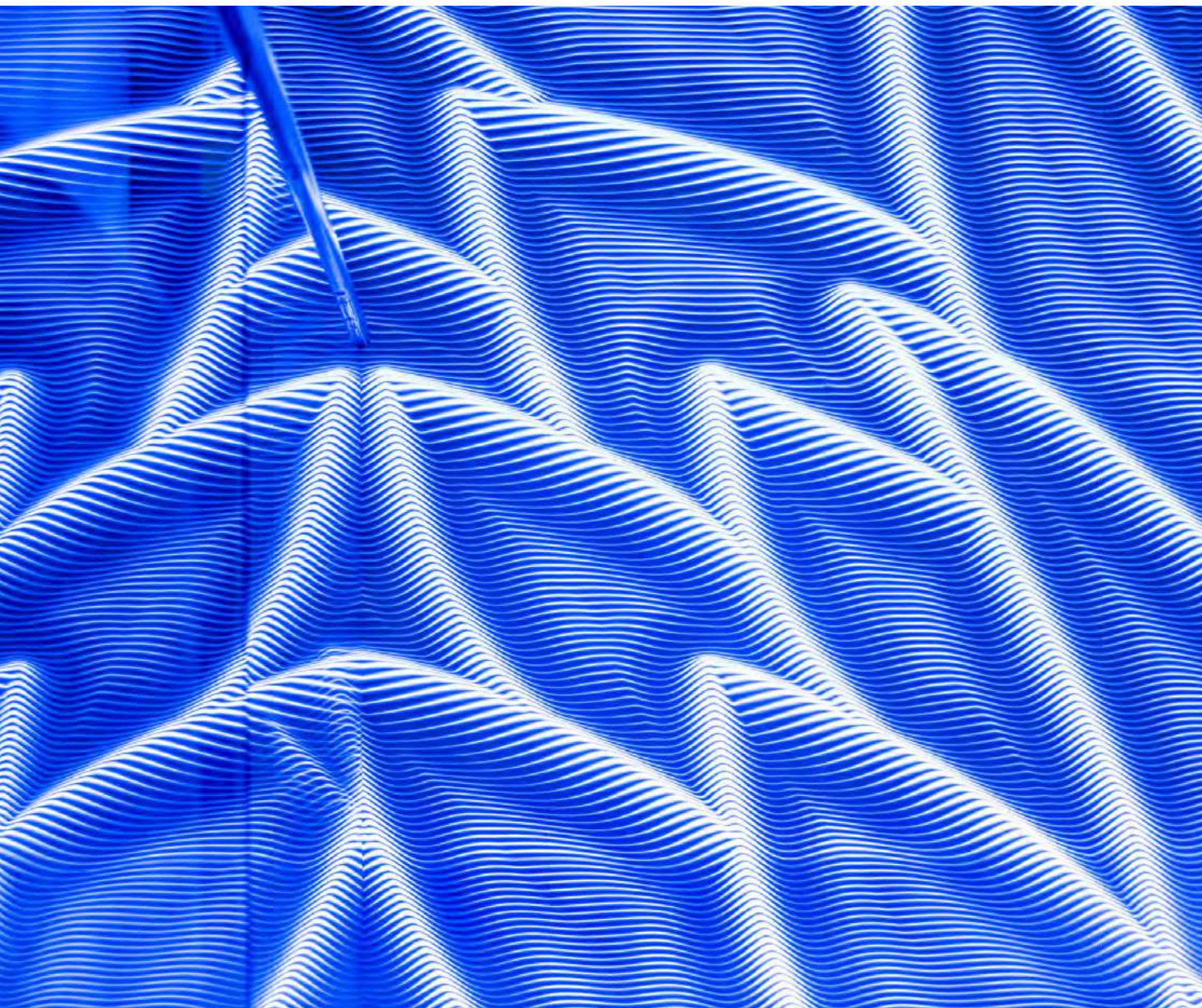
FEATURED:



BILLOW

MARIO
ROMANO

WALLS



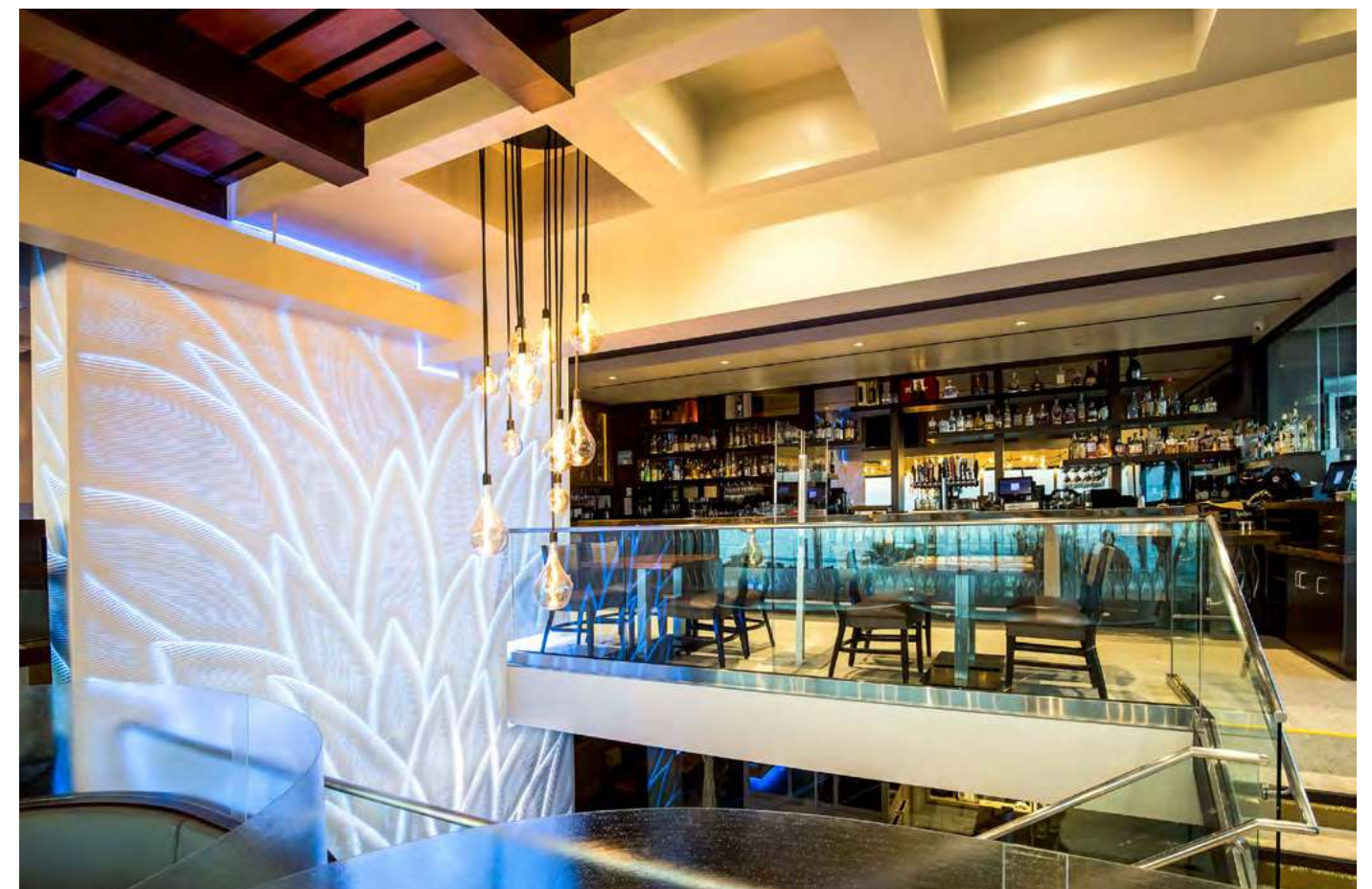
THE STRAND

Greeting you as you enter the staircase that spans two levels, this light feature, created using the design technology of MR Walls by Mario Romano, is a focal point of the fit-out. The backlit detail reflects in the glass balustrade, offering a whimsical visual surrounding the staircase.

With MR Walls' unique joining technique, the edge detail forms an organic shape, allowing pieces to come together like a large puzzle, obscuring the connections between panels.

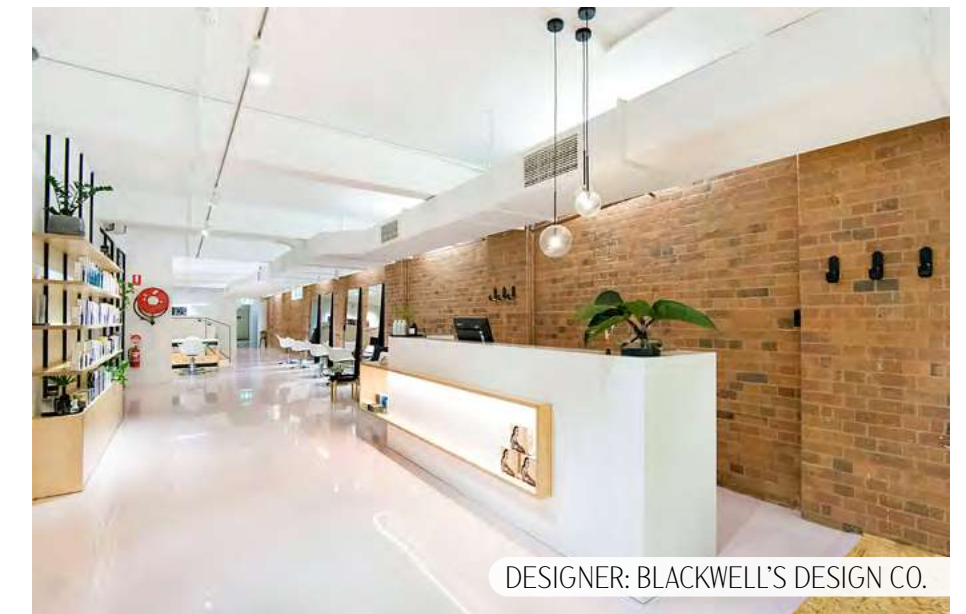
This detail enables the creation of large, impactful walls that are stunning whether backlit, face-lit, or even without lighting.

Given that lighting is such an integral part of hospitality design, MR Walls offers endless design solutions to complement key lighting criteria. The result is an environment that is both visually striking and functionally sophisticated.





Silica free
Polyester free



DESIGNER: BLACKWELL'S DESIGN CO.

RIXON HAIR SALON

Rixon Hair was designed with the objective of creating an intelligently planned, inclusive workspace, which reflects a sense of community and tranquillity.

The reception area is an important feature of the salon, being a critical pivot in the operations of the salon and the first point of entry for clients. It sets the tone for the salon and delivers a carefully considered first impression for customers as they exit the elevator and enter the salon space.

With these design requirements considered, a dramatic Staron-clad reception unit was created to draw the eye into the salon. LED lights were also added to the unit with a plywood product shelf that extends to a service counter.

The two materials complement each other harmoniously to create an inviting feature in the salon that welcomes clients while also creating a functional working space for staff.

FEATURED:
QUASAR WHITE

“The durable, non-porous & monolithic nature of Staron makes it the perfect surface solution as hair colour stains are never permanent & maintenance is easy.”

staron[®]
Solid Surfaces



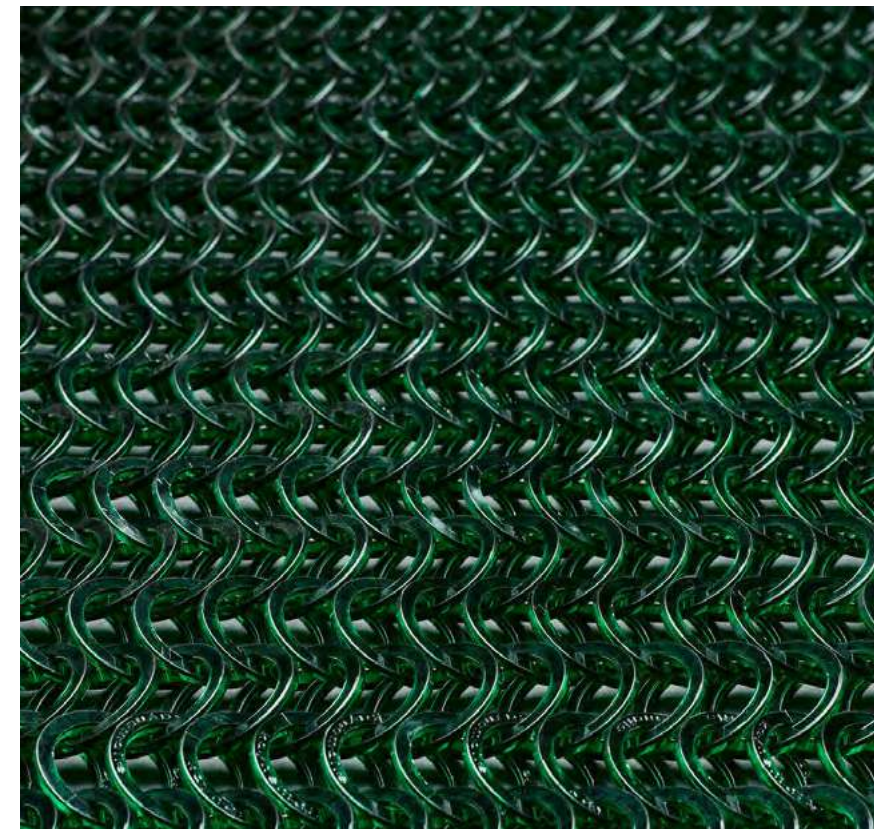
Kaynemaile® RE 8

by **AUSTARON**
SURFACES

RE/8™ Bio-circular Architectural Mesh by Kaynemaile® is a strong yet highly flexible and lightweight mesh, created with seamlessly interlinked polycarbonate rings.

Screens can be made to any height or width without joins. RE/8 mesh is the perfect screening solution for your indoor and outdoor areas.

It also provides energy-efficient solar protection and privacy screening in exterior projects. In addition, the mesh is also ideal for interior applications that require partitions, space dividers, or ceiling features.



Made in New Zealand



Group 1s Fire Certificate
Result to ISO9705 Room
Test



High Airflow



Quick & Easy Installation



70% Solar Reduction



Weatherability



Unlimited Size & Scale



Eco Conscious
Manufacturing



Extremely Strong



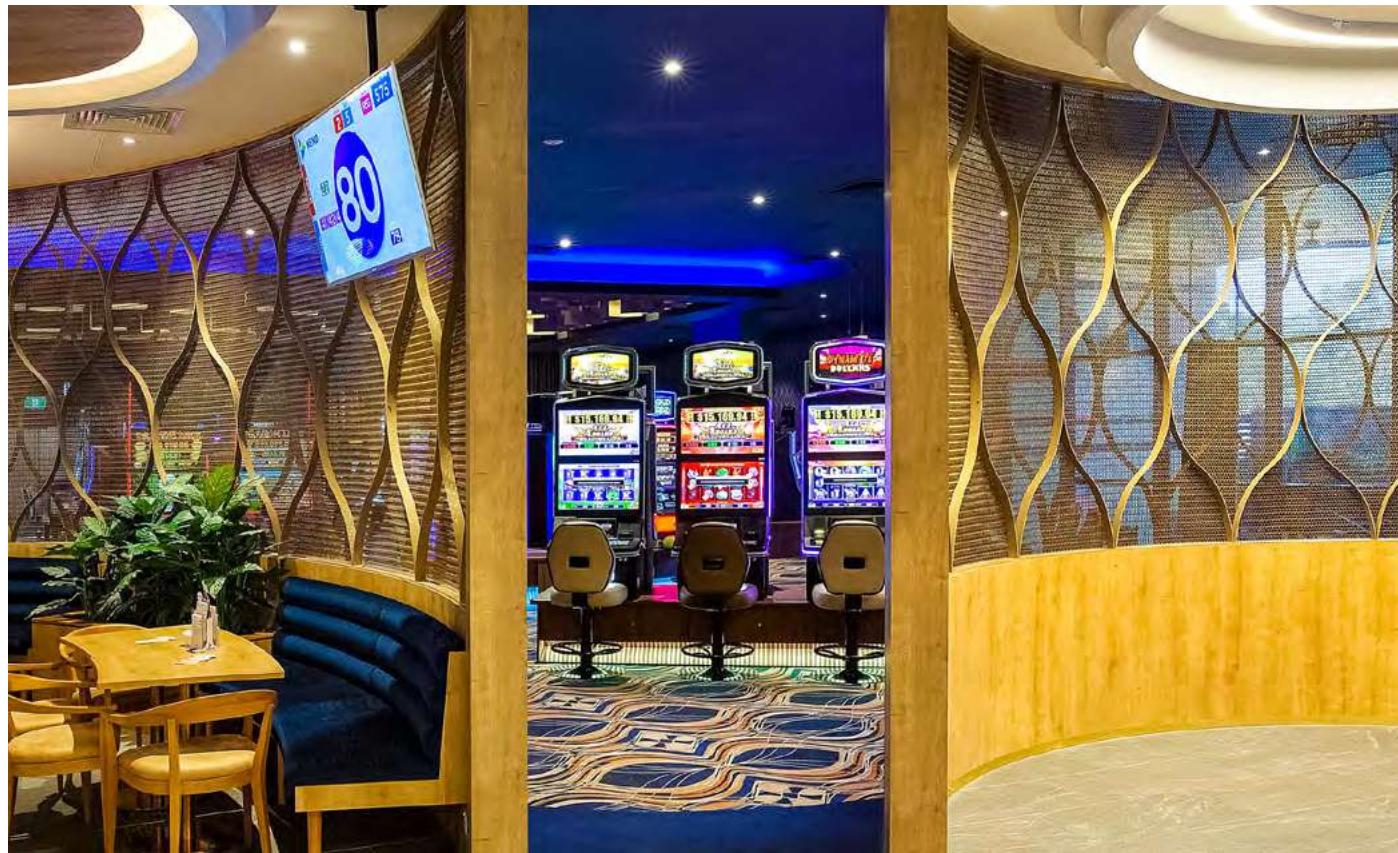
Durability



Corrosion Free



Lightweight



NORTHS DEVILS LEAGUES CLUB

Kaynemaile mesh commands attention, forming large semi-circle walls within the Norths Devils Leagues Club, a prominent entertainment venue and home to the North Brisbane Devils Rugby League team.

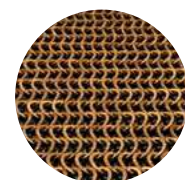
The mesh proved to be a perfect addition to the club's revamp, used for artistic curved features and teamed with metal framing on both sides to add depth to the design. The Bronze Kaynemaile

mesh complements the bronze framing seamlessly, requiring no additional finishes. Recessing the fixing elements into the frame detail created a seamless and elegant look.

Kaynemaile mesh enhances airflow throughout the space while providing optimal privacy for diners in the restaurant, without completely blocking adjacent areas.

Kaynemaile®  R.E/8™

FEATURED:



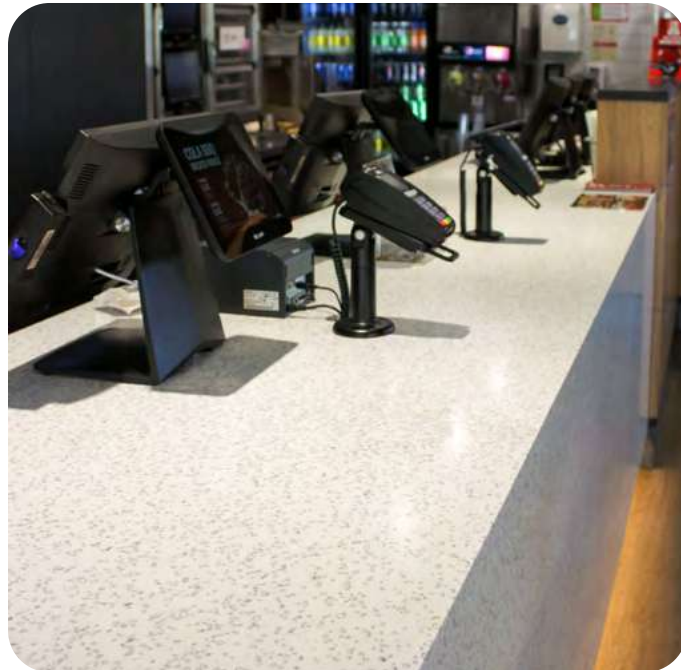
BRONZE



DESIGNER: CAYAS ARCHITECTS

PHOTOGRAPHER: CAROLE MARGAND & CAYAS ARCHITECTS

Inspire **Imagine** Create™



When considering products for fast food fit-outs, it is essential to choose hygienic and durable surfaces. Staron Solid Surfaces offer seamless design freedom while providing a non-porous surface free from areas that harbour grime.

Easy to clean and requiring no sealing, Staron withstands the rigorous cleaning required in these environments. They are ideal for benchtops, tables, seating, wall cladding, bin cladding, and washroom joinery. Additionally, the ability to easily renew and repair the surface ensures the longevity of the fit-out.



SUPERIOR HYGIENIC SURFACES



Silica free
Polyester free



staron®
Solid Surfaces



CREATIVE LIGHTING

For projects seeking lighting effects, Mario Romano Walls offers tremendous potential for enhancing the ambience and functionality of a space. The integration of lighting with these walls allows for both subtle and bold effects, catering to various design preferences and project requirements. Whether it's creating a calming atmosphere in a spa or adding drama to a club or retail environment, the versatility of Mario Romano Walls ensures that lighting can be seamlessly incorporated into the designs.

In interior applications, these walls can change the mood of a room, making it feel cozy and inviting or sleek and modern, depending on the lighting scheme chosen.

The ability to integrate signage within the designs adds practicality without sacrificing aesthetic appeal, making them suitable for commercial spaces where clear wayfinding and branding are essential.

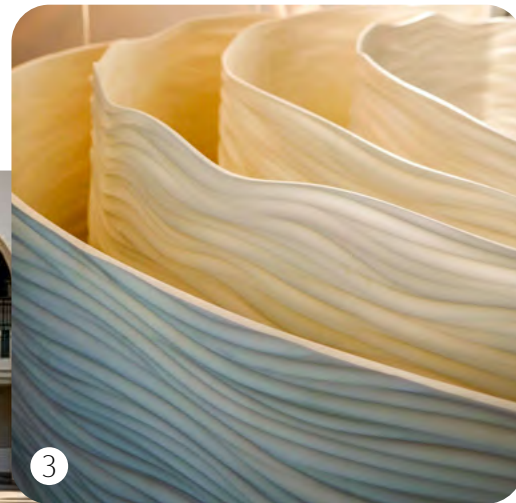
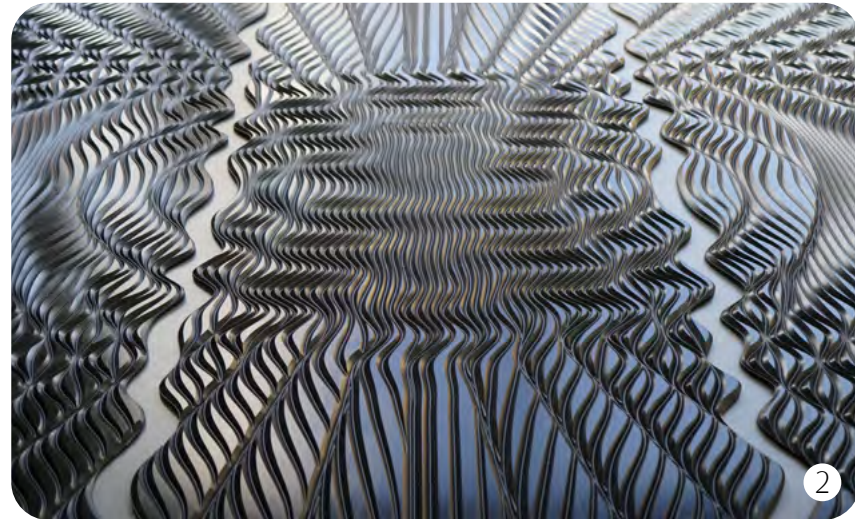
In exterior applications, Mario Romano Walls can enhance outdoor dining or pool areas, creating a striking visual impact during both day and night. The interplay of natural light and shadow on the textured surfaces also adds depth and interest. Mario Romano Walls with innovative lighting solutions not only expands design possibilities but also enhances the overall experience of customers.



MARIO
ROMANO

WALLS

WHAT WE LOVE



1. ATTENTION TO DETAIL:

CNC technology allows for the customisation and adaptation of designs with intricate detail.

2. SEAMLESS JOINING:

The unique joining system of the panels hides seams within the pattern, fitting together like puzzle pieces. This allows designs to scale seamlessly across large areas.

3. CURVE APPEAL:

With Mario Romano designs routed into Staron, panels are easily thermoformed into flowing curves, opening a world of possibilities

4. COVERING ALL AREAS:

With a Group 1 Fire rating to AS5637.1 (AUS) and Group 1S Fire rating to C/VM2 (NZ), Mario Romano Walls are suitable for various applications, including elevators—an excellent opportunity to customise the interiors of these compact spaces.

5. CREATIVE FLAIR:

The combination of routing and thermoforming offers opportunities to create all sorts of amazing artworks.

6. FUN WITH FIN DESIGN:

A collection of designs that are depicted across a single panel's length, which showcases the undulating puzzle joining detail. Carved into Staron, Mario Romano Walls can be used both indoors and out.

7. PRECISE TEXTURE PLACEMENT:

Textured designs are easily manipulated and can align with other project requirements, providing texture exactly where you want and expanding design possibilities.

acrylic couture®

by **AUSTARON**
SURFACES



Made in Italy



Superior Quality



Non - Toxic



UV Resistant



Illumination Opportunity



10 Year Exterior Guarantee



30 Year Interior Guarantee



Ethically Sourced



Hand Crafted



Halogen Free



Biophilic Design



Acrylic Couture's stunning collection of acrylic decorative panels can be used for both interior and exterior applications. Ethically sourced fabrics, feathers, and decorative particulates are embedded within the panels; a hand-crafted product, each panel is an individual creation.

Acrylic Couture® is modified with the inclusion of special nanoparticles for the extremely efficient scattering and reflection of light. Designs are beautifully used as a decorative panel, or the foundation for the creation of bespoke lighting and furniture.





WASHOKU SOUTEN, TOYKO

Located within The Prince Gallery luxury hotel in Tokyo, Japan, Acrylic Couture has been featured in the Washoku Souten Japanese cuisine restaurant to create elegant and unique features that ooze elegance.

Acrylic Couture in Etoile Ice has been used in multiple lighting features in panels that have been framed in steel with the inclusion of LED lighting to illuminate the material.

Etoile Ice has also been used to create privacy screens in the intimate dining area, enhancing the dining experience. The beautiful finish and ease of maintenance make Acrylic Couture the perfect feature for this restaurant application, providing high-end aesthetics.



“Placed above the dining space, the Acrylic Couture creates a grand and sophisticated dramatic feature that reflects the hotel’s luxury brand.”



a c r y l i c
c o u t u r e®

FEATURED:



ETOILE ICE

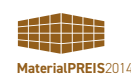
SETTING THE MOOD

Restaurants, bars, and clubs provide ideal settings to incorporate Mario Romano Walls. They can easily adapt to create subtle backdrops that offer a warm and inviting ambiance for restaurant experiences. Alternatively, they can make a bold impact in bars and clubs. When incorporating multiple colourways into the design, these walls can create an ever-changing environment, offering an excellent way to create diverse venue experiences for patrons with the flick of a switch.

From intimate lunches to lively evening gatherings, the ambiance can be tailored to suit the occasion. The dynamic lighting effects and textured surfaces of Mario Romano Walls create visually captivating joinery and wall features.



MARIO
ROMANO | WALLS



ORGANOID

NATURAL SURFACES

by **AUSTARON**
SURFACES

Organoid Natural Surfaces combines the beauty and effects of natural materials with functional interior design in a sustainable manner.

The natural surfaces are available in various unique designs. They are suitable for many decorating uses: as wallpapers or decorative veneers in combination with wood, glass, and acoustic elements.

Organoid Natural Surfaces are pure sensory pleasures for people - you can see, feel and smell them. Due to the gentle production process, the properties of the natural materials are largely preserved, thus all characteristics in terms of look, fragrance and feel are retained.



Made in Austria



Carbon Neutral



FSC - Mix Paper from Responsible Sources



Ethically Sourced



Direct Trade with Farmers



Hand Crafted



Renewable Materials



Organic Natural Materials



Eco Conscious Manufacturing



Aromatic & Tactile



Biophilic Design



Acoustic Design Compatibility



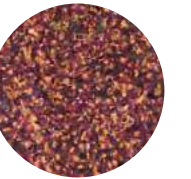
AOC RESTAURANT

DESIGNER: SPACON & X



LIBERTYS, LONDON

FEATURED:



ROASNBLIATN
PREMIUM



ALMWIESN
PREMIUM

ORGANOID
NATURAL SURFACES

RECENTLY LAUNCHED!

HUMANS & NATURE

We humans are always looking to feel cozy and at ease – be it at home, at work or during our spare time. On average, we spend over 90% of our everyday lives indoors. An interior that incorporates nature helps us relax and feel at home.

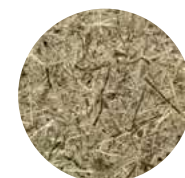
Organoid Natural Surfaces combine aesthetics and the positive qualities of natural materials with functional interior design. The collection of natural surfaces creates a good atmosphere and support health, they can help reduce stress, lighten the mood, and increase concentration with their natural aesthetics.

40 Inspire **Imagine** Create™

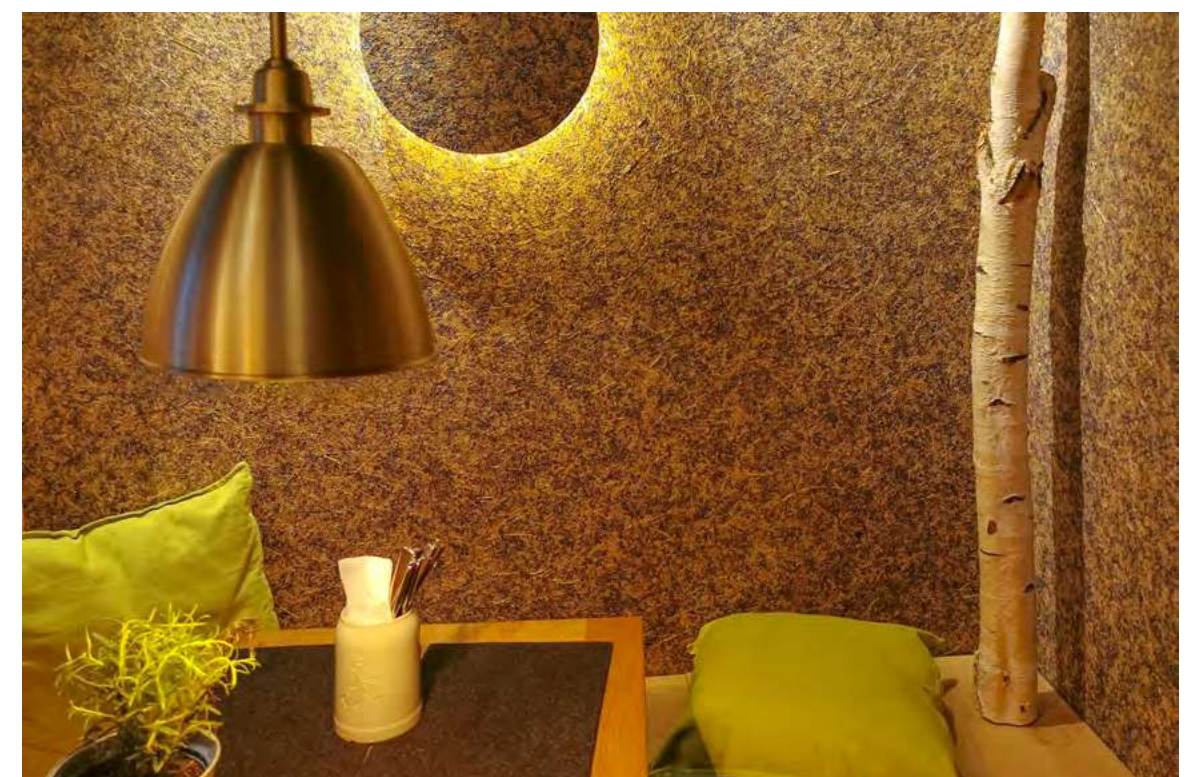


HOTEL BARBARAHOF

FEATURED:



WILDSPITZE
PREMIUM



Inspire **Imagine** Create™ 41

“To underscore the equal importance of care for the body & care for the environment, much consideration was taken in the choice of sustainable materials for the project.”



Designed by Studio Gin & G, this is the stunning Bubble Blow Bar in Singapore featuring the amazing Organoid Natural Surfaces.

Innovative and inviting, Bubble Blow Bar operates in the busy city of Singapore so it was important that the space provide privacy, as well as become a welcoming and relaxing location for comfort and enjoyment.

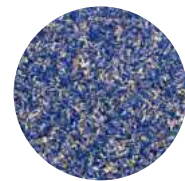
The project features three of Organoid's Natural Surfaces:

- Kornblume Blau
- Wildspitze Himmelblau
- Almwiesn

These make up the colourful rotating elements in the shop window which provide both a privacy screen as well as reflect the playful atmosphere and invite guests to enjoy a unique experience.

The flax backing used by Organoid is made from natural components and is certified OEKO Tex® Standard 100. It is flexible, eco-friendly, light-permeable and suited for a wide variety of applications within interior design.

FEATURED:



KORNBLAUMA
BLAU



WILDSPITZE
HIMMELBLAU



ALMWIESN
PREMIUM

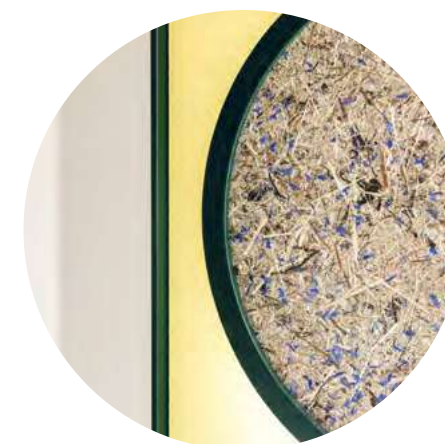
BUBBLE BLOW BAR

ORGANOID
NATURAL SURFACES



DESIGNER: STUDIO GIN & G

PHOTOGRAPHER: FINBARR FALLON

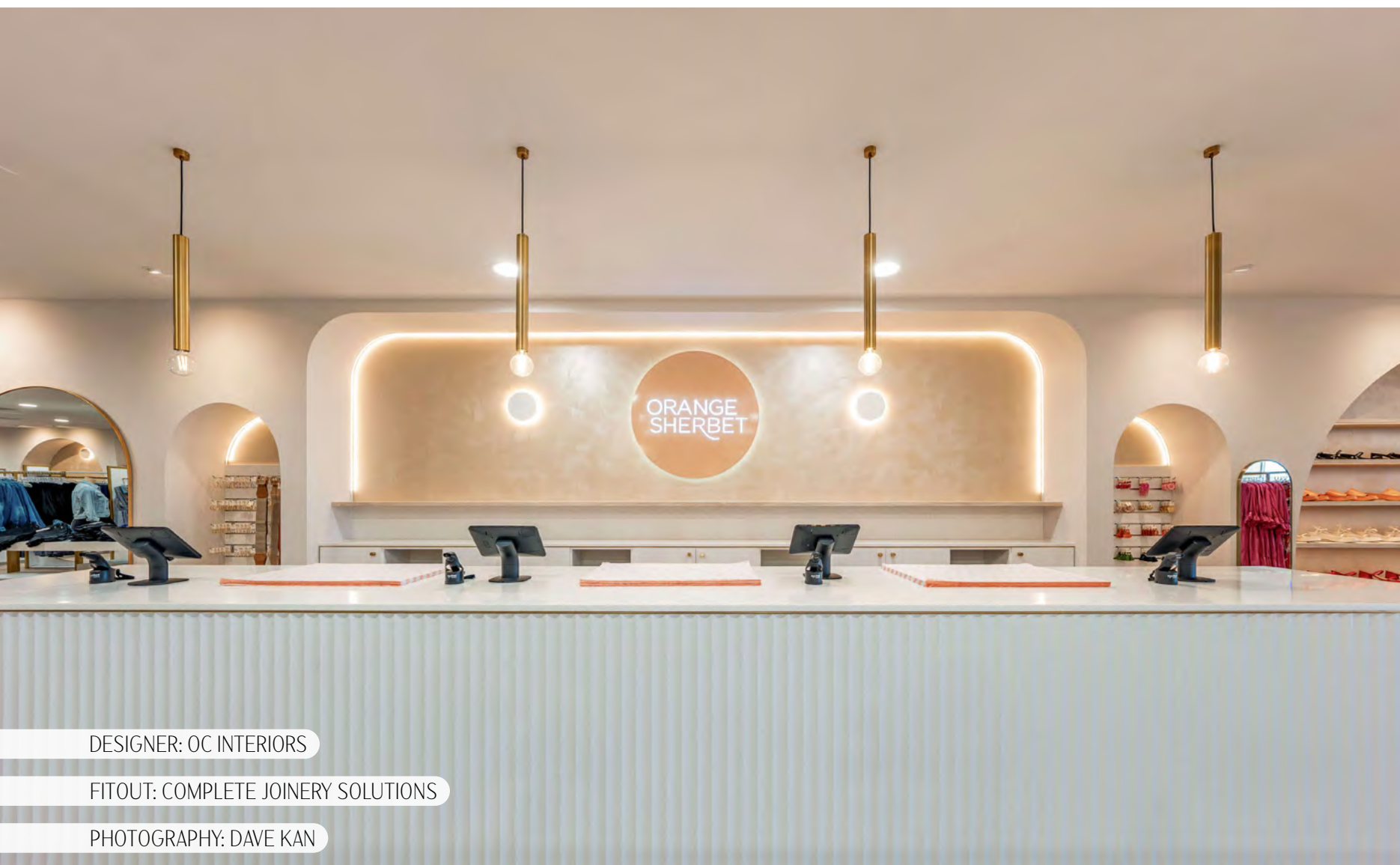




ORANGE SHERBET BOUTIQUE

Staron is not just the go-to surface for creating large monolithic counter applications; in this retail project, the emphasis is on a sleek, slimline detail that enhances the overall aesthetic of the space.

Used in the Orange Sherbet fashion and lifestyle store for the point-of-service counter, Staron offers a soft-to-touch, noise-absorbing surface, making it ideal for wrapping delicate fabrics and gift items. This feature not only provides a pleasant tactile experience for both staff and customers but also ensures a quieter environment, enhancing the shopping experience.



DESIGNER: OC INTERIORS

FITOUT: COMPLETE JOINERY SOLUTIONS

PHOTOGRAPHY: DAVE KAN



Staron's compatibility with other materials is showcased beautifully in this project. Also paired with timber, Staron seamlessly integrates into the collection of fluted merchandise display plinths. The combination of Staron with other materials creates a cohesive and elegant look.

The durability and low maintenance requirements of Staron make it a practical choice for high-traffic retail environments. Staron's flexibility and functionality in a retail setting offer both aesthetic appeal and practical benefits.

FEATURED:



TEMPEST POLAR
(DISCONTINUED)

TEMPEST CONFECTION
(ALTERNATIVE)

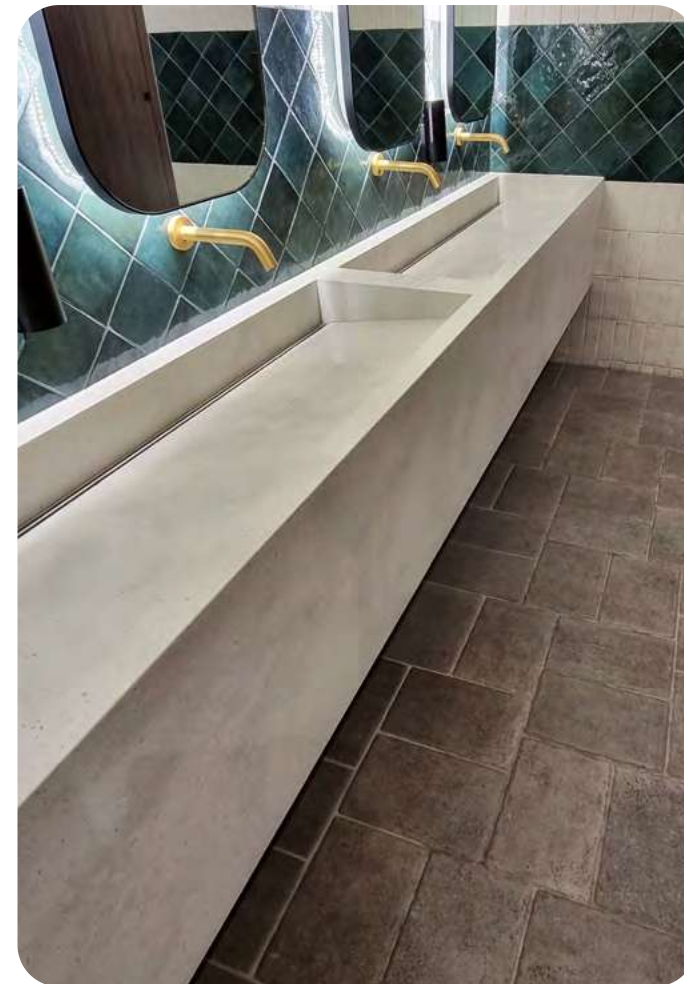
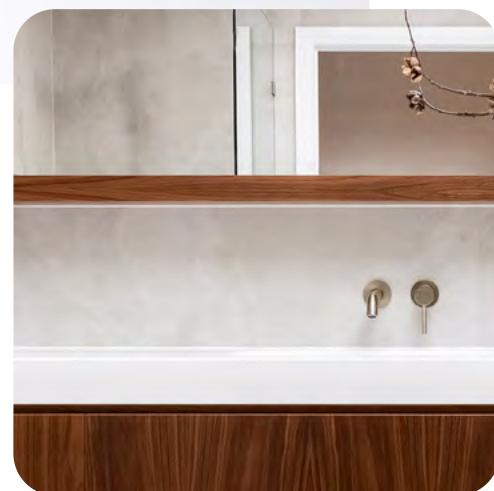
staron®
Solid Surfaces



CUSTOM WASHROOM SOLUTIONS

Infinitely customisable, Staron is well-suited for creating custom vanities and washplane designs. Whether using ready-to-integrate Staron bowls or opting for a bespoke solution, Staron remains unaffected by water, making it ideal for wet areas.

To expedite the washplane design process, a collection of ready-to-use specification documents, including designs for baby change counters, is available on the Austaron website.



staron®
Solid Surfaces



DESIGNED BY PFRIEM INNENARCHITEKTUR

acrylic
couture®

ZWEISINN MEIERS BAR & RESTAURANT

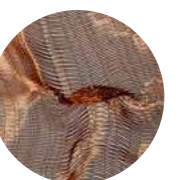
Creating an elegant atmosphere to a restaurant environment is an important part of the dining experience. The space must be inviting to customers while also making a design statement.

When Pfriem Innenarchitektur designed Zweisinn Meiers, they introduced Acrylic Couture to the front of the bar space and also the walls of the shelving that housed wine glasses, plates and cutlery.

With the introduction of LED lighting surrounding the Acrylic Couture panels, a luxurious and dynamic dining experience was created.

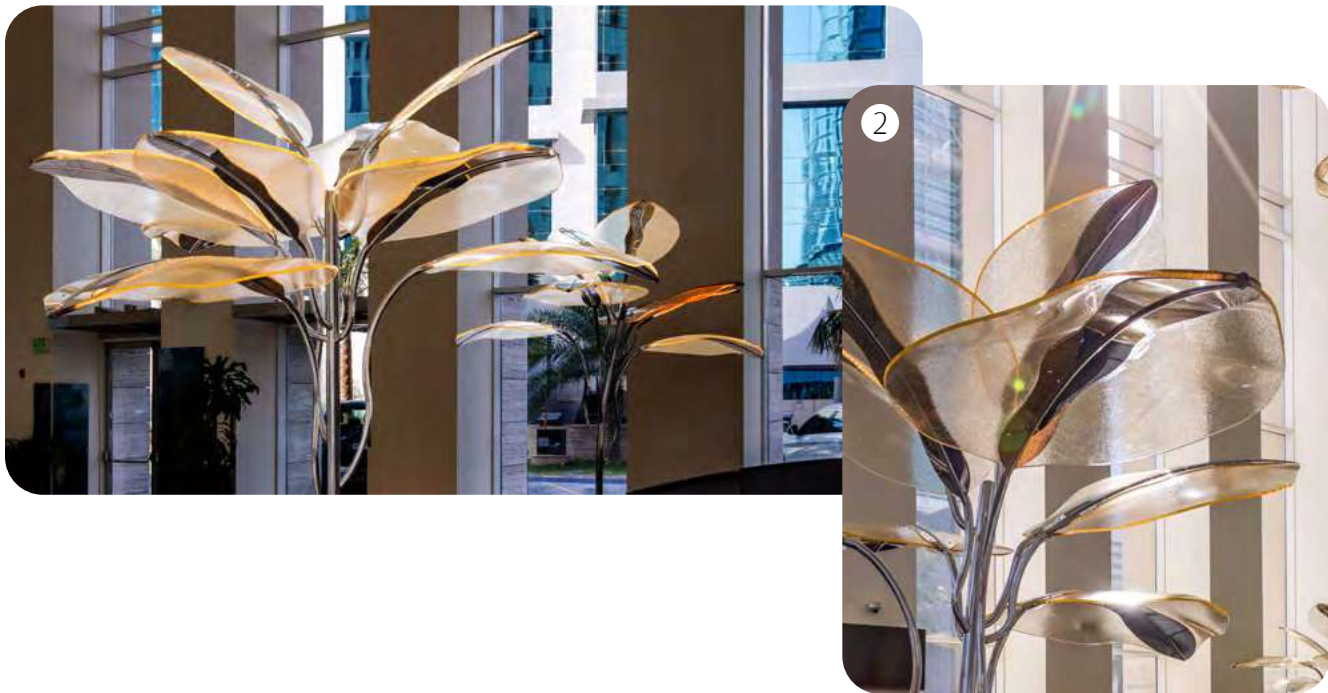
The Acrylic Couture shimmers in the daytime, and glows in the evening when the LED lighting is switched on.

FEATURED:



CANCELLO
COPPER

WHAT WE LOVE



1. EYE CATCHING FURNITURE:

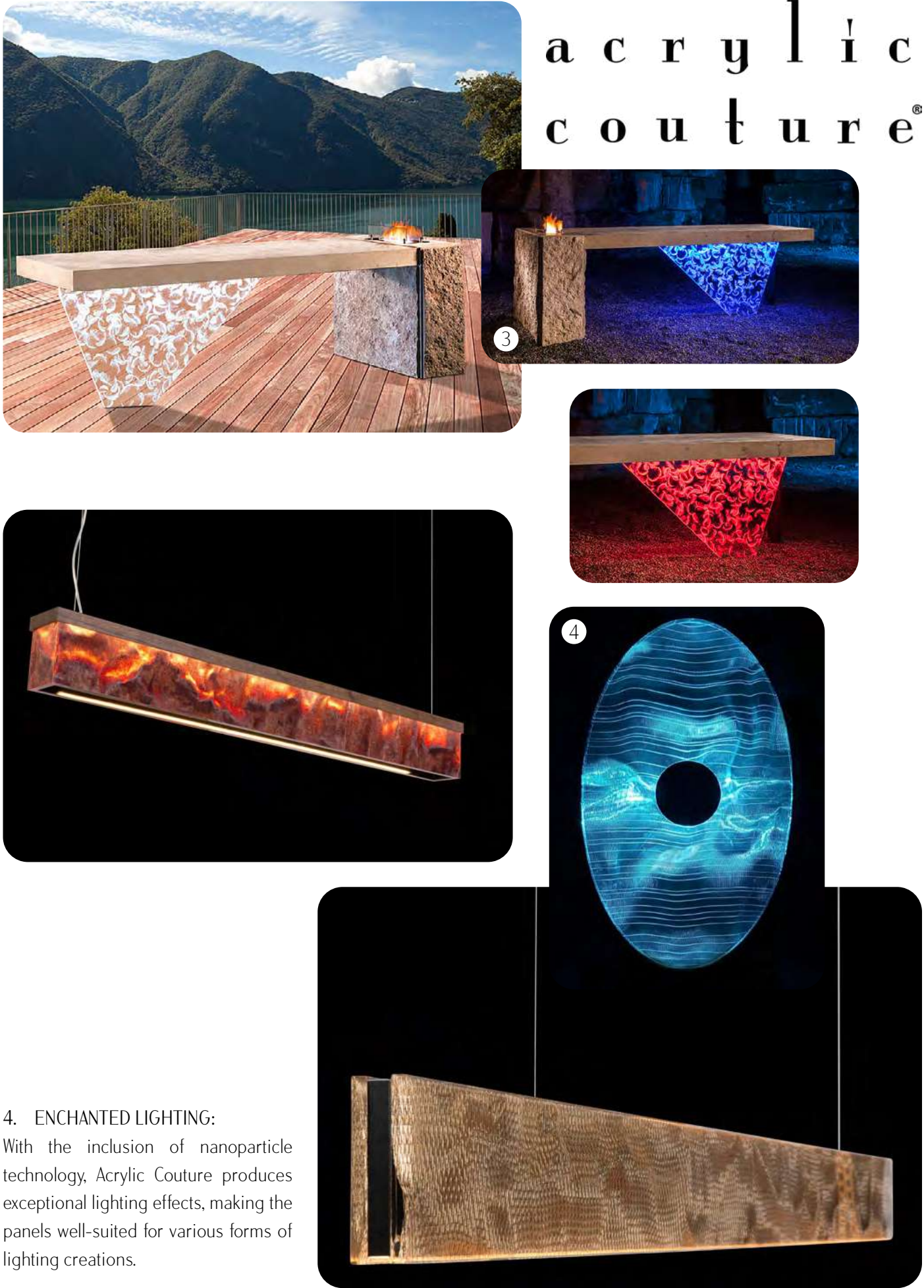
Acrylic Couture is a stunning surface for creating beautiful furniture items, boasting a glass-like clarity that is visually delightful.

2. BESPOKE DESIGN:

These Flower Lamps are magnificent and are beautiful examples that showcase the custom manufacturing opportunities that were achieved by the Acrylic Couture team.

3. OUTDOOR DESIGN POSSIBILITIES:

Beyond indoor applications, the quality of these panels enables their use in exterior settings, expanding creative design possibilities.



4. ENCHANTED LIGHTING:

With the inclusion of nanoparticle technology, Acrylic Couture produces exceptional lighting effects, making the panels well-suited for various forms of lighting creations.

EVERY SURFACE TELLS A STORY

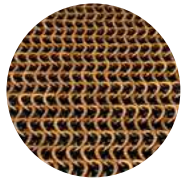
BLUE FIN FISHING CLUB

Undergoing several upgrades over the years, the latest refurbishment by Inaspace Architecture and Design has propelled the clubhouse into a new era.

As part of the upgrade, Kaynemaile’s architectural mesh was selected for two massive ceiling features, incorporating a curved ceiling design. The mesh stands out with the hairpin shaped custom ceiling feature spanning 37 metres in length and the Spiral-shaped design reaching 48 metres long. Each Bronze ceiling feature was manufactured as a single piece of mesh. These ceiling features effectively lower the overhead visual space, immersing the gaming room in intricate winding ceiling detail.

The mesh consists of interlinked polycarbonate rings formed seamlessly to create a strong yet highly flexible mesh. Easily curved and shaped, the mesh offers superior design flexibility for both interior and exterior areas of hospitality projects.

FEATURED:



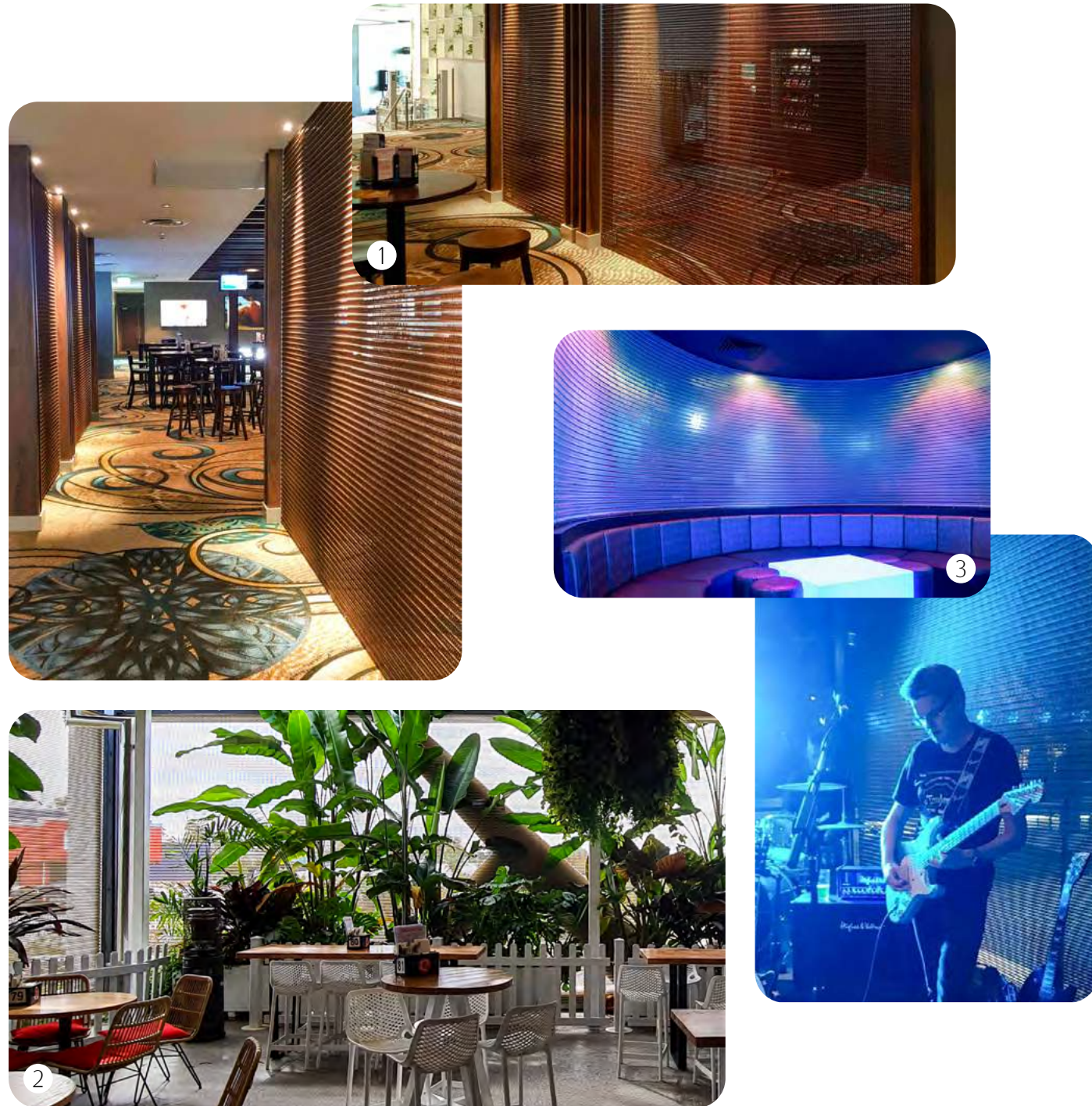
BRONZE

“Each Bronze ceiling feature was manufactured as a single piece of mesh.”



WHAT WE LOVE

Kaynemaile®  R.E/8



1. ROOMS WITHIN ROOMS:

RE/8™ bio circular mesh is excellent for interior screening, effectively dividing spaces. Its colour is penetrated within the material, ensuring super durability.

2. PROTECTING THE VIEWS:

When used for façade screening, the mesh maintains unobstructed views from the inside out, blending seamlessly into the background.

3. ENHANCING LIGHTING DESIGN:

RE/8™ serves as an ideal backdrop for lighting displays in bars and clubs, and it enhances photography opportunities.

4. FLEXIBILITY WHEN USING SCREENS:

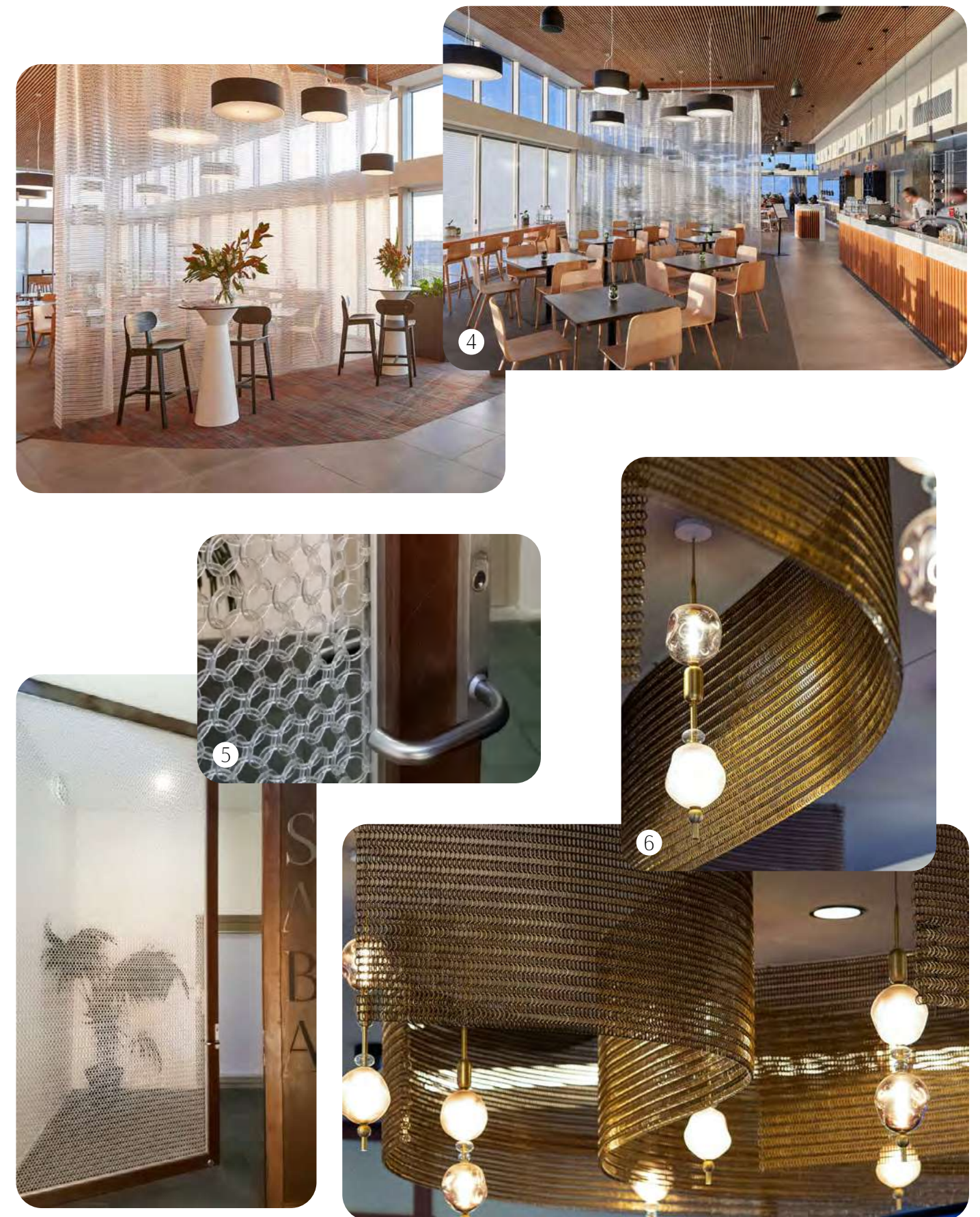
Folding screens made from RE/8™ create a soft, fabric-like visual effect, offering flexibility to open up areas or create intimate spaces within environments.

5. DOORS WITH A DIFFERENCE:

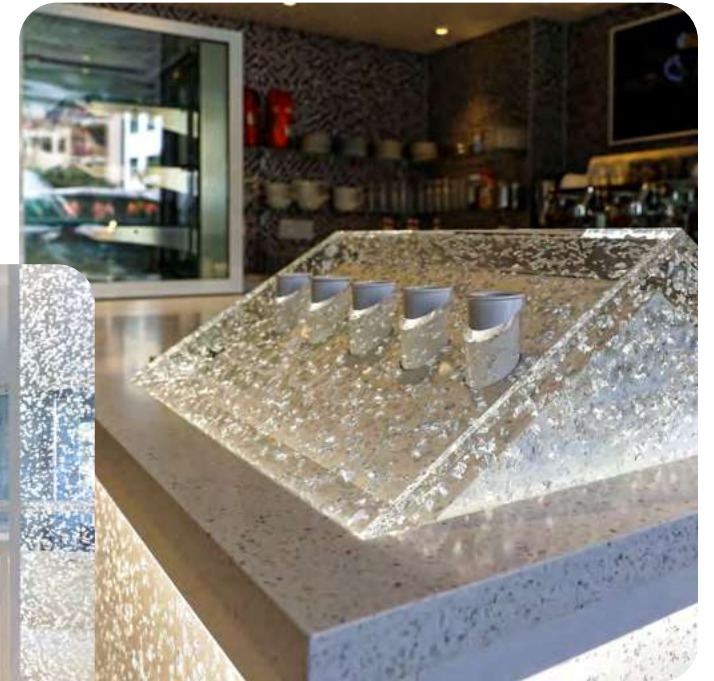
The mesh is an excellent material used as infill panels for doors and other joinery elements.

6. IMPACTFUL CEILING FEATURES:

The lightweight and easy-to-curve nature of the mesh allows for creative ceiling designs, without size limitations it offers endless possibilities for artistic features in interior fit-outs.



EVERY SURFACE TELLS A STORY



SOPHISTICATED INTERIORS

Acrylic Couture is pure luxury. Made in Italy this stunning collection of panels features meticulously selected fabrics, feathers, and particulates inlaid within crystal clear acrylic.

The inlays float within the resin, and the addition of nanoparticle technology within the acrylic creates a three-dimensional visual depth that draws the eye.

They are purely mesmerising and the ideal product for creating a sophisticated fit-out. Whether used in small details or as the foundation for a larger scale design vision, the beauty of Acrylic Couture is unmatched in its class.



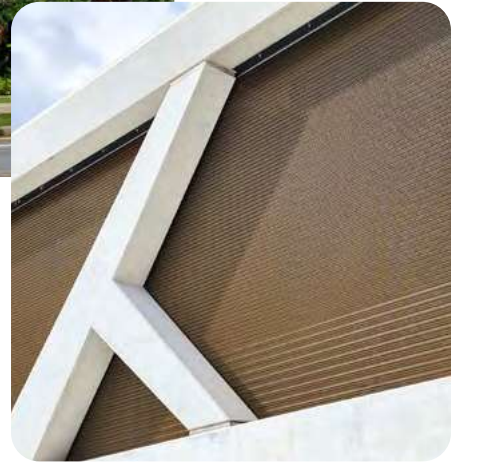
acrylic
couture®



ENHANCING FACADES

Creating beautiful and interesting designs to enhance building facades is made easy with RE/8™ bio-circular mesh. Whether you're aiming for sleek or sculptural design details, the mesh easily adapts to both new construction and retrofits. It offers the flexibility to be stretched over frames for complex three-dimensional shapes, or it can be hung flat or subtly curved for simpler design accents.

The mesh also enhances building comfort by providing superior ventilation and solar shading, ideal for parking garage exteriors and commercial buildings. It maintains airflow and transparency while offering protection from sun, wind, and rain. Non-corrosive it will not stain buildings or discolour over time, and it is lightweight, durable and impact resistant.



Kaynemaile®  **RE/8**

Ambiloom® Mirror 1700

Size
550mm x 1,700mm x 50mm (W x H x D)

Max. power consumption of LEDs
7 watt

Weight
21 kg

Suspension
horizontal or vertical

Item No.
61BS-6000-1010



Ambiloom®

by **ETTLIN LUX®**
MADE FOR UNIQUE PROJECTS

The Ambiloom® Mirror collection includes modern wall mirrors in three different formats with ambient lighting as an additional function.

For this visual to be achieved, the composite of high quality, translucent mirror glass and ETTLIN LUX® fabric, is backlit by LEDs integrated on the back plate.

The lighting scenario unfolds via a touch sensor integrated into the aluminum frame. Three-dimensional light lines shine on the surface of the mirror. These give interiors optical depth and a special atmosphere. When switched off, the mirror image is clear.

Ambiloom® Mirror 800

Size
400mm x 800mm x 50mm (WxHxD)

Max. power consumption of LEDs
3,75 watt

Weight
8 kg

Item No.
61BS-6000-0505



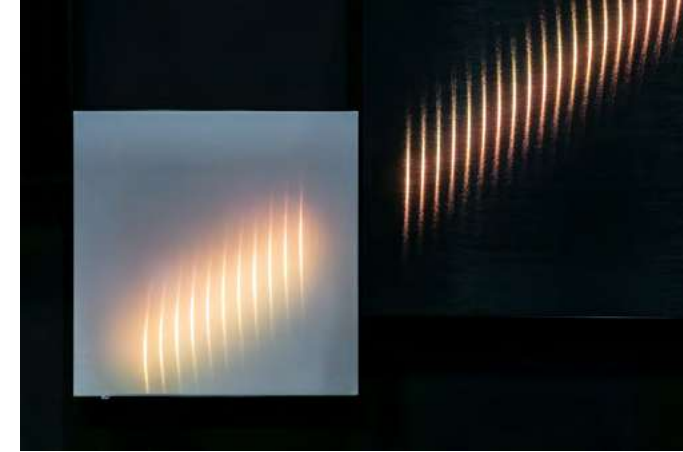
Ambiloom® Mirror 750

Size
750mm x 750mm x 50mm (WxHxD)

Max. power consumption of LEDs
2,5 watt

Weight
12 kg

Item No.
61BS-6000-750Q



LIMITED EDITION!



The Ambiloom® Pendant is a ceiling-mounted pendant luminaire with a textile surface. In addition to a functional downlight, the luminaire also has ambient lighting.

The pendant lamp impresses with its textile surface, functional downlight and ambient lighting effect.

For a more subtle effect, the luminaire is operational without the inclusion of a light bulb and harmoniously blends into various interiors.

Ambiloom® Pendant 250



BLACK
Reflector Black

Item No.
61PL-2506-00BL

Size
ø 200mm
250mm



BRASS
Reflector Brass

Item No.
61PL-2506-00BR

Canopy
ø 95mm
H 24mm



CHROME
Reflector Black

Item No.
61PL-2506-00CH

Canopy Length
Approx. 1,45m

Weight
3 kg



TIMBER
Reflector Black

Item No.
61PL-2506-00WD

Cable
Textile Cable Black

Ambiloom® Floor 250

Size Lampshade
ø 200mm
250mm height

Total Height
ca. 1,500mm

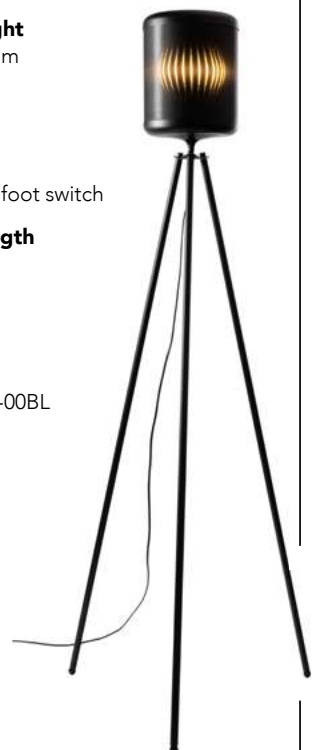
Weight
5 kg

Cable
Black with foot switch

Cable Length
3,000mm

Colour
Black

Item No.
61FL-2506-00BL



AUSTARON SURFACES

Inspire **Imagine** Create™



DISCOVER MORE FROM OUR
GREAT RANGE OF PRODUCTS
IN THE RESIDENTIAL EDIT
AVAILABLE NOW



BRING YOUR IDEAS TOGETHER WITH: **STYLE**
SOURCEBOOK



staron®
Solid Surfaces

MARIO
ROMANO

WALLS

acrylic
couture

ORGANIC
NATURAL SURFACES

Kaynemaile®

ETTLIN LUX®
MADE FOR UNIQUE PROJECTS