



# How Kaynemaile is making light work of custom ceiling features





Kaynemaile ceiling features are a simple and cost effective way to create dramatic centre pieces for foyers, reception and entrance areas or anywhere you need a feature design element.

Made with our RE/8 Bio-circular Architectural Mesh, our ceiling features are not only beautiful, but also highly functional and lightweight.



**Honoree**  
Biodesign,  
Circular Design,  
Materials



**Jury Winner**  
Building Envelopes,  
Cladding & Roofing



**Popular Choice Winner**  
Sustainable Design



**Winner**  
Building Envelope



# Why our mesh is great for Ceiling Features

## TECHNICAL BENEFITS

# 1

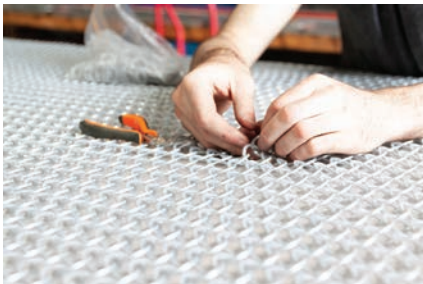
### RE/8 Bio-circular Architectural Mesh

RE/8 mesh is comprised of an industry first cradle-to-gate carbon neutral and ISCC PLUS certified polycarbonate by Covestro, a leading global producer of advanced polymers.

# 2

### High Airflow

RE/8 mesh gives approximately 75% airflow through the cross sectional open area. This means air compliant movement can be maintained in interior spaces.



# 3

### Design Flexibility

Because our mesh has no panel size limit, the design options are endless—from large single piece screens to geometric screens stretched over a subframe to kinetic screens moving in the wind.

# 4

### Strong

Our mesh is made from the highest performing thermoplastic. It is extremely robust, impact resistant, and is thermally stable from -40°C to 120°C.

# 5

### Lightweight

RE/8 mesh is lightweight (3kg per m2) and goes up fast, cutting down the install time and dramatically saving costs.

# 6

### 10 Year Warranty

Kaynemaile's RE/8 mesh for standard interior and exterior applications has a 10 year warranty.\*

*\*Excludes kinetic or custom applications. Contact Kaynemaile to discuss your specific application.*



# Sculptural Bronze Hotel Ceiling Feature

## CASE STUDY

Inspired by the winding Avon river, this beautiful ceiling feature creates warmth and intrigue for arriving guests.

The Crowne Plaza hotel in Christchurch is a premium destination for international and local visitors to the rebuilt city centre after the large earthquake in 2011 which devastated the city centre.

Repurposed from an office block tower the new development, with interior design by Designworks, is now the largest hotel in the city and has been developed to make the most of the 360 views of the city and the natural environment of the surrounding Port Hills and Southern Alps.

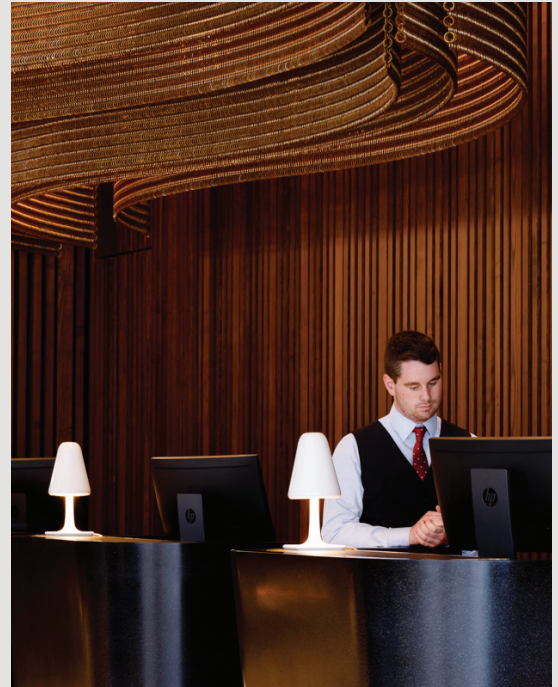
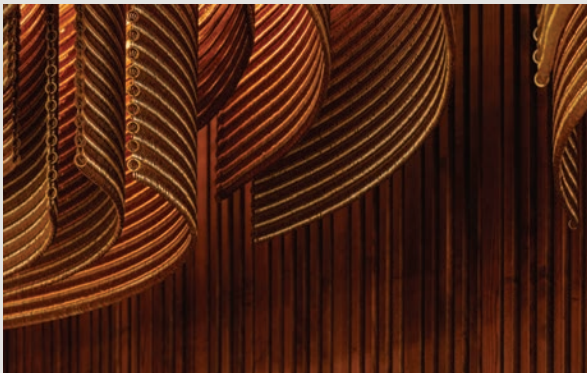


Design: Designworks | Location: Christchurch, New Zealand | Photography: Jason Mann



Kaynemaile worked with the Designworks team to create the custom ceiling feature for the hotel lobby. The Bronze mesh ribbons are lit from above bringing a warmth to the space as guests arrive.

Our mesh gives approximately 75% airflow through the cross sectional open area which means air compliant movement can be maintained in interior spaces.



**Inspired by the winding Avon river, the bronze coloured mesh ribbons are lit from above bringing a warmth to the space as guests arrive.**





# Winding Through the Office

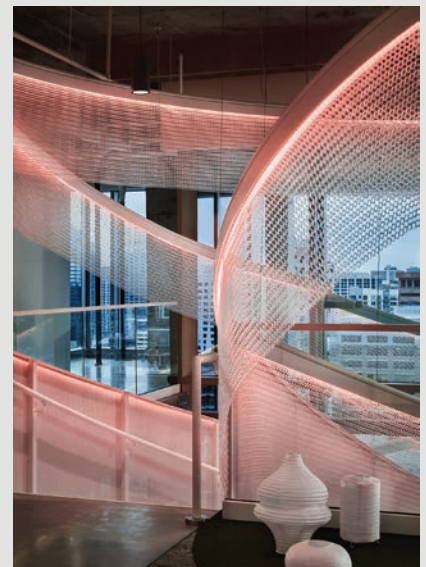
## CASE STUDY

This fit-out for a leading technology company in Atlanta effortlessly blends bold colour with subtle hues, creating a relaxed atmosphere for employees and the occasional office dog.

The strong geometry of the stair is enhanced by a continuous ribbon of our Water Clear mesh, delicately wound over multiple floors.



Location: Atlanta, USA | Photography: Garey Gomez





# One Incredible Ceiling Feature for New Retail Store

## CASE STUDY

Launching a new brand in a busy marketplace can be challenging. Freshly redesigned retail stores have helped this telecommunications company meet that challenge and gain great exposure – particularly with this beautiful ceiling feature!

Working with a varied ceiling height required extra considerations for the designers Warren and Mahoney. The large space and full height windows were an opportunity to provide passers-by with an enticing view into the store.

The continuous flowing nature of this feature piece is made possible by our unique manufacturing technique. This allows us to manufacture screens to any dimension without joins or visible seams.

RE/8™ Bio-circular Architectural Mesh by Kaynemaile is super light weight at only 3kgs per square metre which makes large height screens less of a challenge to install. To ensure alignment with lighting and other site conditions the design was match bent to a 1:1 template, avoiding costly errors and site rework.

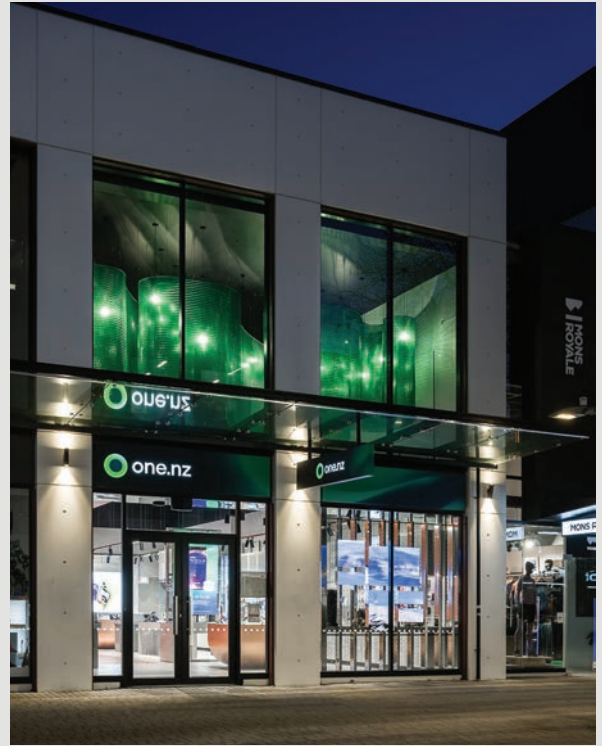
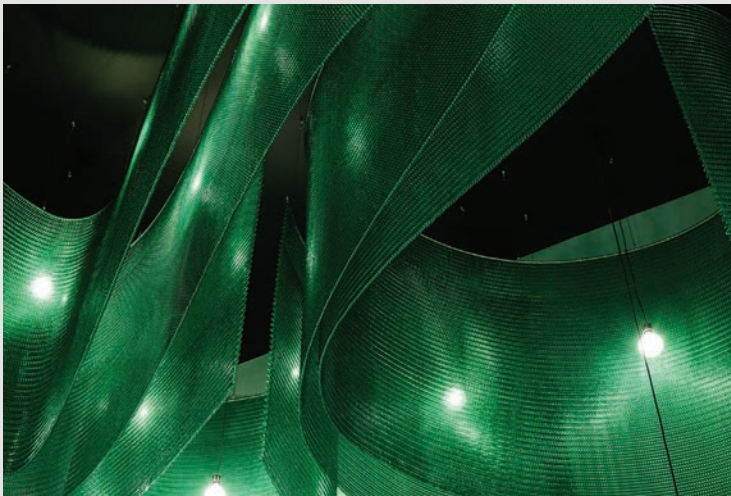


Design: Warren and Mahoney | Location: Christchurch, New Zealand | Photography: Dennis, Lightforge



A ribbon-like feature was designed using Kaynemaile's translucent Jade Green, the colour working perfectly with the client's brand colours.

Viewed from the street the ceiling feature flows through the space and the translucent colour is enhanced by pendant lights dropping through at various locations.



**This stand-out ceiling feature has transformed this retail space into a beautiful immersive environment!**







# Luxurious Ceiling Feature for One Lakefront Apartments

## CASE STUDY

Robin Chell designed these ceiling features with Kaynemaile to create a series of beautiful, fluid light fixtures that draw inspiration from the waves of the lake close by.

One Lakefront is the ultimate in modern lakeside luxury. An 8-storey, 236-unit mid-rise apartment complex which is located adjacent to Seattle's Lake Union. South Lake Union has been the fastest growing neighbourhood in one of the fastest growing cities in the US for the last several years. With over 10,000 new apartment units, as well as the new Amazon.com campus in the same area, One Lakefront is the closest to the lakeshore. The interior design was to evoke a sense of 'modern lake-house' style.



Design: Robin Chell Design | Location: Seattle, USA | Photography: Daniel Sheehan



Robin Chell Design was responsible for the interior design of the apartment complex including space planning, finishes, design procurement and installation.

Robin Chell herself designed these ceiling features with our mesh to create a series of fluid light fixtures that draw inspiration from the waves of the lake close by. These lighting features were used in the pavilion lobby and as long strips above the elevator lobby creating a strong connection to the two areas.

These flowing ceiling features are easy for us to achieve with our seamless mesh and the light weight makes them easy and fast to install.





# Kaynemaile Ceiling Features

## TECH SHEET



Kaynemaile Interior Ceiling Features are lightweight and easy to install and work beautifully with feature lighting. With our simple hanging system we can easily fabricate curved or circular screens to work with your design concept.

### Features:

Material: RE/8 Bio-circular Architectural Mesh, fire and UV resistant

Weight: 3kg m<sup>2</sup> (0.6lbs/ft<sup>2</sup>)

Color palette: All Kaynemaile standard colours are suitable for interior use.

Visit [www.kaynemaile.com](http://www.kaynemaile.com) for colour range.

Sizes: We can make our screens to any height or width to suit your design.

### Supplied Hardware:

Kaynemaile ceiling features are supplied with RE/8 mesh and all the hanging hardware you need to connect to your ceiling, spaceframe or attachment point.

### Hanging Systems:

Our systems are simple and we can provide fixings to suit most scenarios. If you have MEP or other conditions at the ceiling fixing position then we can provide suspended cable style fixings to allow the feature screens to drop below any interfering elements – this means you have flexibility with your connection locations.

### Custom Curves:

We can easily make shaped ceiling features by curving the top stainless steel hanging tube. Gentle waves or sharply defined bends are possible (a minimum radius may apply). With Kaynemaile ceiling features the top line of each screen is horizontal and the top and bottom lines should be parallel. Provide us with a plan view of your concept and we can quickly confirm the design parameters for you.

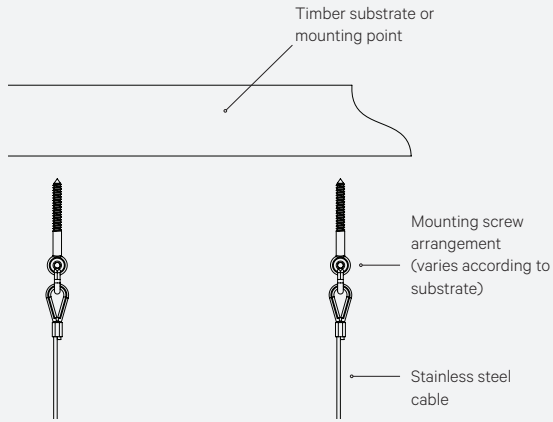
### Material Compliance:

Our material meets most interior compliance codes including Class A in the NFPA E84 in USA and Group 1s in NZ and AU in the AS/ISO 9705 room test with a SMOGRA of 0.5m<sup>2</sup>/s<sup>2</sup>. As the material has a high degree of openness it does not significantly affect airflow throughout your space.



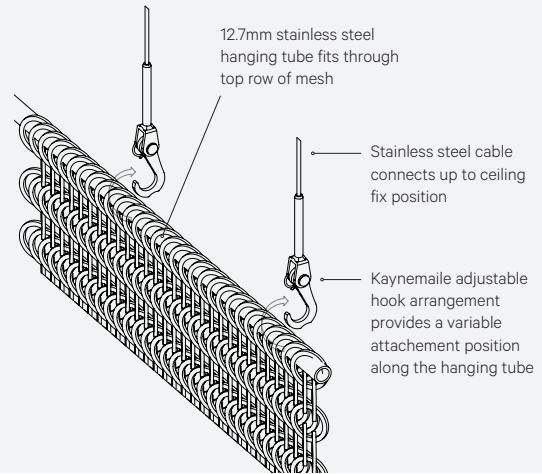
### Kaynemaile Suspension Hanger Example—Top Fixing

Not to scale. All details are indicative and for your information only.



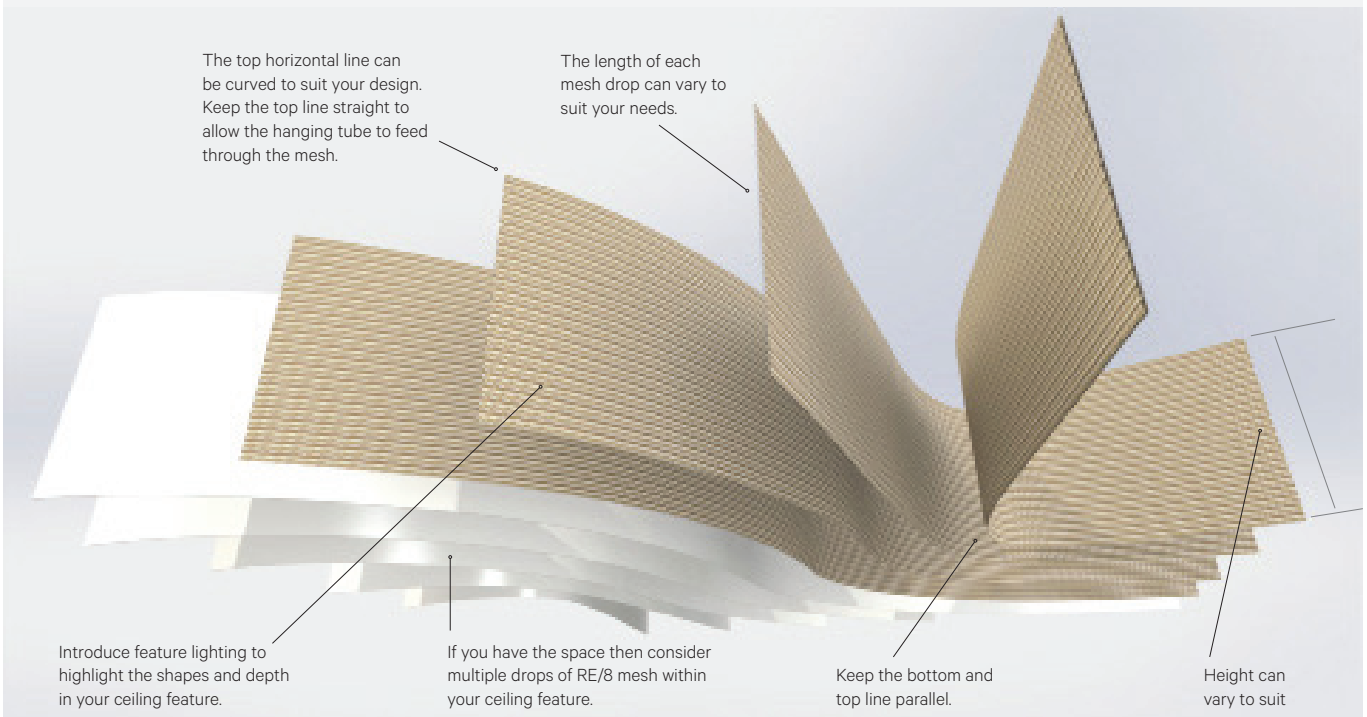
### Kaynemaile Suspension Hanger Example—Flat Hook & Tube

Not to scale. All details are indicative and for your information only.



### Design Guide Overview

Not to scale. All details are indicative and for your information only.



Disclaimer: It is the Buyer's responsibility to ensure that the Products are used in compliance with all building, fire codes, standards and laws. Kaynemaile shall have no responsibility whatsoever for any such compliance obligations (or any non-compliance).



# Lightening the Mood for Conventions

## CASE STUDY

Kaynemaile gives huge scope for lighting effects.

The Greater Columbus Convention Center is in downtown Columbus, Ohio, United States. The convention center was designed by Peter Eisenman, constructed in 1993, and expanded in 1999 and again in 2016. It is a huge 1,800,000-square-foot (170,000 m<sup>2</sup>) facility, including 447,000 square feet (41,500 m<sup>2</sup>) of exhibit space, three ballrooms, and 74 meeting rooms.

Kaynemaile worked with LMN Architects & Schooley Caldwell along with Eventscape to create custom ceiling features for two of the convention center's ballrooms. The scope was to engineer, fabricate, and install two custom ceiling features for the 17,700 square foot (1644 m<sup>2</sup>) Union Ballroom and the (1338 m<sup>2</sup>) square foot Short North Ballroom. Both ceilings incorporated a custom design with linear metal dividers, our mesh screens and angular fin baffles. Our mesh screens were hung in long continuous strips, without joins. They sit between each baffle in alternating lengths to give an undulating effect.



Design: LMN Architects, Schooley Caldwell | Location: Ohio, USA | Photography: Brad Feinknopf, OTTO, Raven & Snow



Color changing RGBW LED lights were incorporated into the dividers to create a sparkling form that can be changed to create numerous lighting effects. The Water Clear mesh was chosen as it has great scope for lighting effects and has a decorative effect when not lit. The lighting effects were a key component of this project as they help to break up the very large volume of the room.

The geometric angled pattern of the dividers act like the spines of the ceiling, providing support for the zig-zag shaped horizontal fins and Kaynemaile screens.

As there were over 400 dividers, 3,800 individual fins, 900 brackets and over 12,000 square feet (1115 m<sup>2</sup>) of mesh in the project, it was critical to develop a plan to fabricate each piece in the most economical way. Being lightweight and easy to install, our mesh was an ideal choice for this project.



Kaynemaile® 

RE/8

**Need a Sample?**

**No problem, contact us and  
we'll get one out to you.**

E: [sales@kaynemaile.com](mailto:sales@kaynemaile.com)

P: USA Free Call 1855 387 5440

P: New Zealand HQ +64 4 473 4989

E: Australia [sales@austaron.com.au](mailto:sales@austaron.com.au)

P: Australia +61 (2) 9822 7055