

# AUSTARON SURFACES

Inspire **Imagine** Create™

**STARON:**  
**SILICA-FREE SURFACES,**  
QUALITY YOU CAN RELY ON

**SOLAR PROTECTION &  
PRIVACY SCREENING**  
WITH RE/8™ FROM  
KAYNEMAILE®

**ECO-CONSCIOUS  
PRODUCT PICKS**



“Our surfaces allow one’s imagination to flourish;  
the more you learn about our product range,  
the more exciting designing becomes.”



Directors left to right:  
Brett Worden (AU), Belinda Worden (AU),  
Justin Worden (NZ), Gareth Edwards (NZ), Danie Mars (NZ)

Founded in Australia in 2003, Austaron Surfaces is a people-driven company, renowned for excellent service and an appreciation of connections made along the project journey.

With a personable enthusiasm, our team strives to support clients in their pursuit of product knowledge and assistance for a successful project outcome.

Offering a collection of high-quality surfaces, our brands are innovative and award-winning. Locally owned and operated in Australia and New Zealand, our product range offers both visual excellence and a solution-oriented outcome to the building industry.

# INDOOR & OUTDOOR; SURFACES FOR ALL PROJECTS

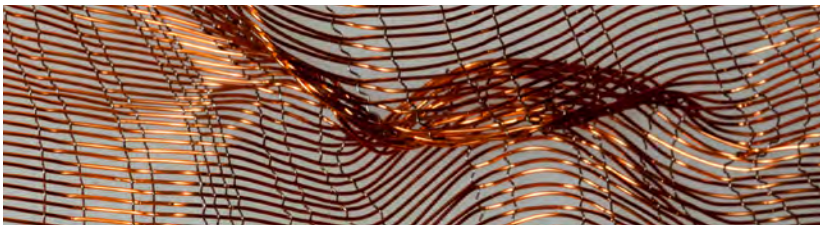
staron®  
Solid Surfaces



MARIO ROMANO | WALLS



a c r y l i c  
c o u t u r e®



ORGANIC  
NATURAL SURFACES



Kaynemaile®







# CONTENTS

STARON SOLID SURFACES .....	06	ORGANOID NATURAL SURFACES.....	14
INTEGRATED SINKS & BASINS .....	08	KAYNEMAILE ARCHITECTURAL MESH.....	16
DESIGN OPTIONS.....	09	AWARDS.....	18
MARIO ROMANO WALLS.....	10	CONTACT US.....	19
ACRYLIC COUTURE.....	12		





# staron®

Solid Surfaces



Staron® Solid Surfaces are manufactured using a blend of silica-free mineral and premium acrylic resin. The non-porous nature of Staron means that no stain is ever permanent, providing a durable application that is both hygienic and easy to clean. In addition, Staron's inconspicuous joining method eliminates dirt-trapping crevices.

Staron is repairable, renewable and UV stable. Even after years of use it can simply be sanded and restored to its original condition. Staron does not have or require any finishing polishes or sealers; it is the same solid material throughout its thickness.

Staron is a premium silica-free solid surface offering an abundance of design potential to the building industry. Staron Solid Surfaces are Group 1 Fire rated to AS5637.1 (AUS) & Group 1S Fire rated to C/VM2 (NZ). [Learn more...](#)



Made in South Korea



AU - Group 1 Fire Certificate  
Result to AS5637.1  
(AS ISO 9705: Full scale room test)



NZ - Group 1s Fire Certificate  
Result to C/VM2  
(AS ISO 9705: Full scale room test)



Silica & Polyester Free



Hygienic & Stain Resistant



Seamless Design Flexibility



Illumination & Routing  
Opportunity



Colour Versatility



Weatherability & Durability



Greenguard Certified  
& Gold Certified



Environmental Management  
System Certified ISO 14001



National Sanitation Foundation  
for Food Safety Certified



# INTEGRATED SINKS & BASINS

**STARON SINKS:**  
Enhance your project with an addition from our collection of integrated sinks and basins. Aesthetically pleasing & hygienic, eliminating silicone & mould. The perfect partner to a Staron benchtop in residential or commercial projects.  
[Learn more...](#)



**INTEGRATED STAINLESS SINKS:**  
Designed to inspire and constructed for solid surfaces. The Integrated Stainless Steel sink collection allows Staron to flow seamlessly from the benchtop to the internal sides of the sink, integrating the sink and Staron benchtop.  
[See full range...](#)



# DESIGN OPTIONS



Splashbacks



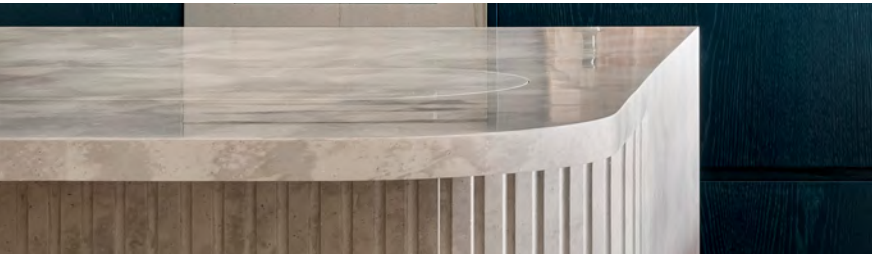
Seamless Coves & Integrated Splashbacks



Integrated Sinks & Drainers



Backlighting



Endless Edge Profiles



Door & Drawer Applications



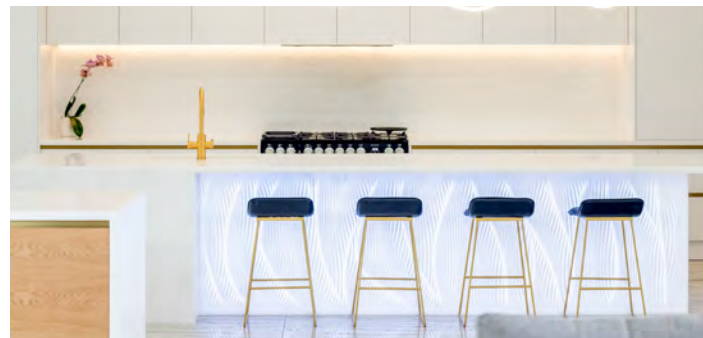
# MARIO ROMANO | WALLS



Mario Romano Walls® (MR Walls) add tactile and visual texture to both interior and exterior spaces. The extensive selection of artistic designs makes it easy to create stunning feature walls and joinery. Also perfect for wet areas, MR Walls is a non-porous, low-maintenance, and grout-free alternative to tiles.

Each design is crafted to the required dimensions and appears seamless due to a unique puzzle-piece design, offering unlimited scale and flexibility. Catering to project-specific outcomes, MR Walls provides a bespoke fit for every application and is simple to install. Expanding the scope of possibilities, custom designs are achievable, and the panels are also suitable for backlighting and curved designs.

All designs are intricately carved into Staron Solid Surfaces, ensuring both durability and aesthetic appeal. [Learn more...](#)



Processed Locally



AU - Group 1 Fire Certificate  
Result to AS5637.1  
(AS ISO 9705: Full scale room test)



NZ - Group 1s Fire Certificate  
Result to C/VM2  
(AS ISO 9705: Full scale room test)



Silica & Polyester Free



Hygienic & Stain Resistant



Seamless Design Flexibility



Illumination & Routing  
Opportunity



Colour Versatility



Unlimited Scale



Quick & Easy Installation



Durability



Biophilic Design



Greenguard Certified  
& Gold Certified

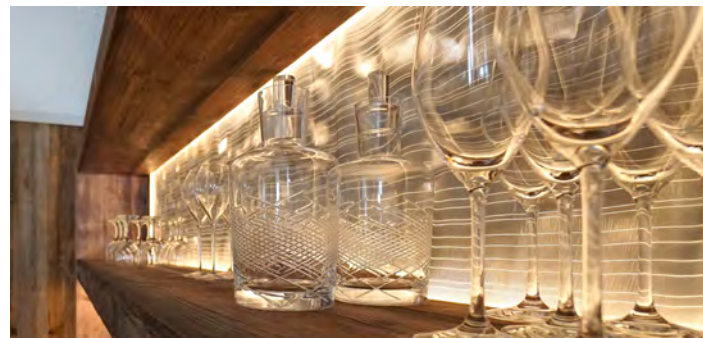


# acrylic couture®



Acrylic Couture® offers a stunning collection of decorative panels suitable for both interior and exterior applications. Each panel is meticulously crafted using superior-quality acrylic resin, encapsulating ethically sourced fabrics, feathers, and other eye-catching decorative elements. This hand-crafted product stands in a class of its own, with every panel being a unique creation.

The high-quality resin used in the production of Acrylic Couture is enhanced with special nanoparticles, which maximise the brilliance of the panels by efficiently scattering and reflecting light. These designs are not only visually captivating as decorative panels but also serve as an ideal foundation for bespoke lighting and furniture pieces. The panels offer an elegant visual appeal, which is further enhanced with side and face lighting for added impact. [Learn more...](#)



Made in Italy



Superior Quality



Non - Toxic



UV Resistant



Illumination Opportunity



10 Year Exterior Guarantee



30 Year Interior Guarantee



Ethically Sourced



Hand Crafted



Halogen Free



Biophilic Design



Wet Area





Organoid® Natural Surfaces combines the beauty and effects of natural materials with functional interior design in a sustainable manner. Gentle on the environment, Organoid Natural Surfaces is a beautiful sustainable interior product option. Created using rapidly renewable raw materials and recycled waste products such as Alpine hay, lavender, roses, moss, spent coffee and beer hops.

They are suitable for many decorating uses: as wallpapers or decorative veneers in combination with wood, glass, and acoustic elements.

Organoid Natural Surfaces are pure sensory pleasures - you can see, feel and smell them. Due to the gentle production process, the properties of the natural materials are largely preserved, thus all characteristics in terms of look, feel and fragrance are retained. [Learn more...](#)



-  Made in Austria
-  Carbon Neutral
-  FSC - Mix Paper from Responsible Sources
-  Ethically Sourced
-  Direct Trade with Farmers
-  Hand Crafted
-  Renewable Materials
-  Organic Natural Materials
-  Eco Conscious Manufacturing
-  Aromatic & Tactile
-  Biophilic Design
-  Acoustic Design Compatability

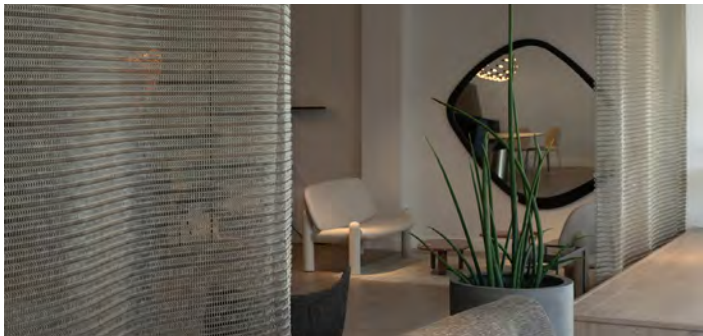














# Kaynemaile®



RE/8™ Bio-circular Architectural Mesh by Kaynemaile® is a strong, yet highly flexible and lightweight mesh, created with seamlessly interlinked polycarbonate rings. Screens can be made to any height or width without joins, making RE/8 mesh the perfect screening solution for both indoor and outdoor areas. It also offers energy-efficient solar protection and privacy screening for exterior projects.

The mesh is perfect for interior applications such as partitions or space dividers, offering both functionality and aesthetic appeal. Its interlocking links introduce a tactile element to the design while enabling the free flow of light and air. Thanks to its lightweight and flexible properties, it integrates seamlessly into curved designs and is easy to install. RE/8 mesh provides an excellent foundation for creating dynamic ceiling feature displays. [Learn more...](#)



-  Made in New Zealand
-  Group 1s Fire Certificate Result to ISO9705 Room Test
-  High Airflow
-  Quick & Easy Installation
-  70% Solar Reduction
-  Weatherability
-  Unlimited Size & Scale
-  Eco Conscious Manufacturing
-  Recycled Content
-  Strong & Durable
-  Corrosion Free
-  Lightweight



# AWARDS

It's not just us that think our products are amazing. Our brands have been recognised for their excellence in design, quality and innovation.



# STARON DESIGN AWARDS

Every year our Staron Design Awards are open to Commercial and Residential projects. In addition to this, a Concept category is in place to embrace creative thinking for solid surface uses outside of “real life” projects. The properties of Staron make it the perfect fit for a multitude of design outcomes. Open to Australian and New Zealand projects, the Staron Design Awards offers a platform to celebrate designers’ knowledge and ability to showcase solid surfaces within the built environment. [Learn more...](#)

**\*Please note:** Projects using Mario Romano Walls are also eligible to be entered provided the designer showcases the product’s attributes in an exceptional way.

### PHOTO CREDITS:

Athea House, Designed by AM Interior Studio, Photographed by ABI Interiors (Front cover)

Bright White Kitchen, Designed by Lee Hardcastle, Enigma Interiors (P. 4)

Frankston Private Hospital, Designed by Silver Thomas Hanley, Photographed by Paolo Cappelli (P. 6)

Kro Bakery, Praha, Designed by Neuhausl Hunal, Photographed by R. Uleh (P. 6)

Cotton White Kitchen, Designed by Lesley McClennan, Photographed by Jamie Caputo (P. 7, 8)

Bright White Bathroom, Designed by Dean Welsh Design (P. 8)

Bayview One, Designed by Darren James Interiors (P. 8)

Kitchen Designed by Tania Kloester, TK Design (P. 9)

Ocean View, Designed by Concepts by Gavin Hepper (P.9)

Buderim Kitchen, Designed by Kate Anderson, Photographed by Blink Media (P. 10)

Mount Nebo Kitchen, Sanded Dover | Metallic Sleek Silver, Cancellor Silver, Designed by Kim Duffin (P. 13)

Organoid Natural Surfaces Almwiesn Premium, Liberty’s London © Liberty’s London (P. 14)

Organoid Natural Surfaces Skelettblatta, © birgitkoell.at (P. 14)

One NZ, Designed by Warren & Mahoney, Photographed by Dennis, Lightforge (P. 16)

Pavilion House, Designed by Bespoke Interior Designs NZ, Photographed by John Williams (P.17)

Staron Design Awards Winner Balmoral House, Designed by AM Interior Studio (P. 21)

Jackspoint, Designed by Maja Marshall, Photographed by John Williams (P. 21)

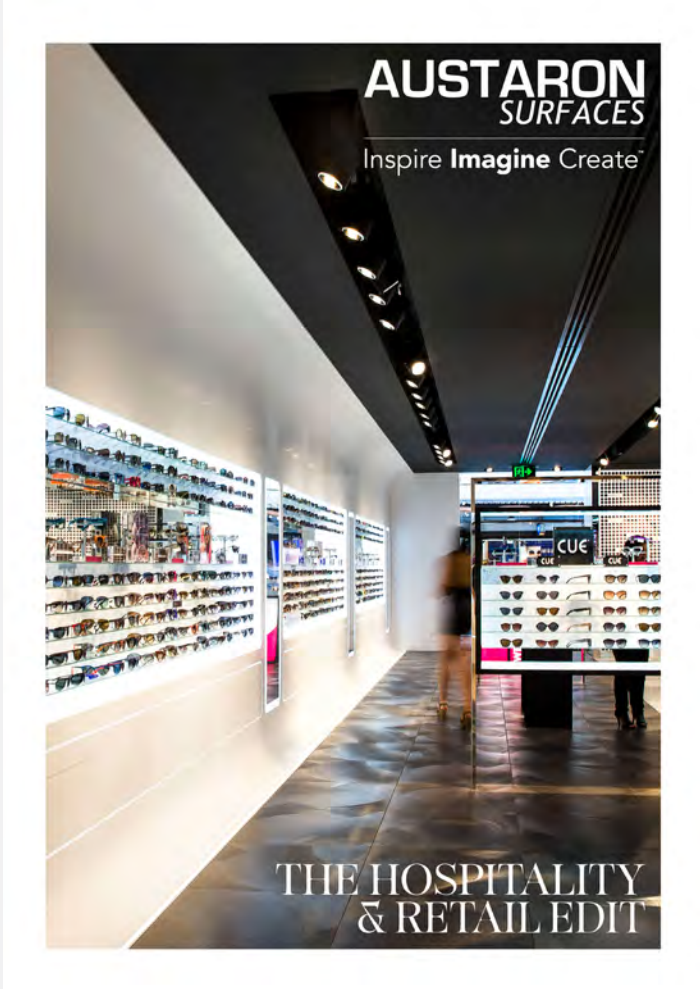


CONNECT WITH ONE OF [OUR TEAM](#) TO DISCUSS YOUR UPCOMING PROJECT TODAY!

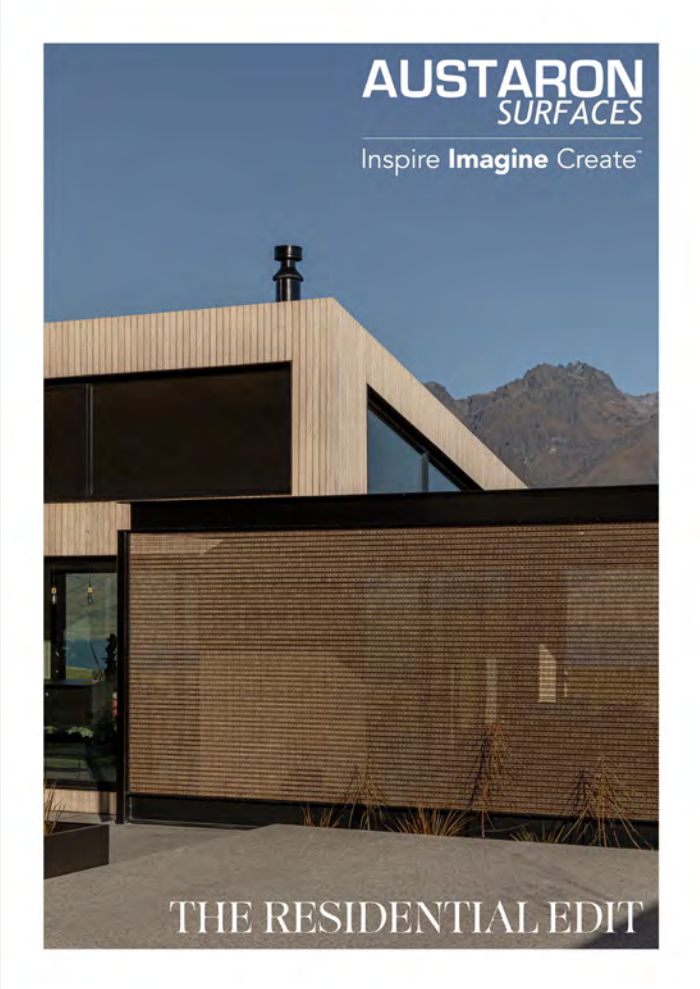


# GET INSPIRED

Discover more from our great range of products in:  
'The Residential Edit' and 'The Hospitality & Retail Edit'



DISCOVER HERE:



DISCOVER HERE:

Inspire **Imagine** Create™





# AUSTARON SURFACES

Inspire **Imagine** Create™



BRING YOUR IDEAS TOGETHER WITH: **STYLE**  
SOURCEBOOK



**staron®**  
Solid Surfaces

MARIO  
ROMANO

WALLS

acrylic  
c o u t u r e

**ORGANOB**  
NATURAL SURFACES

Kaynemaile®