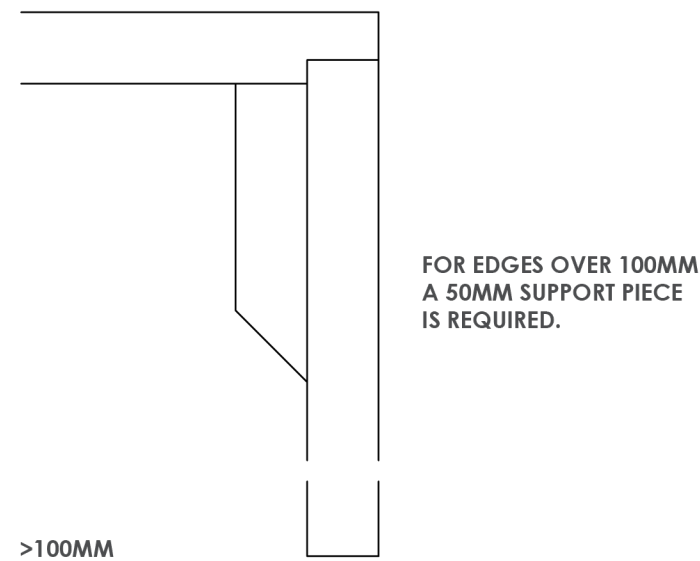
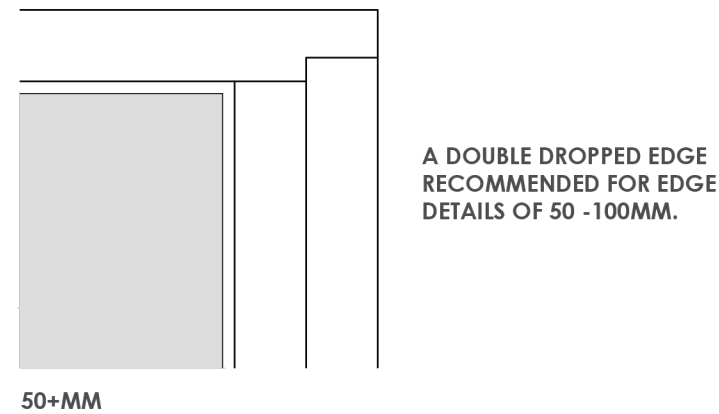
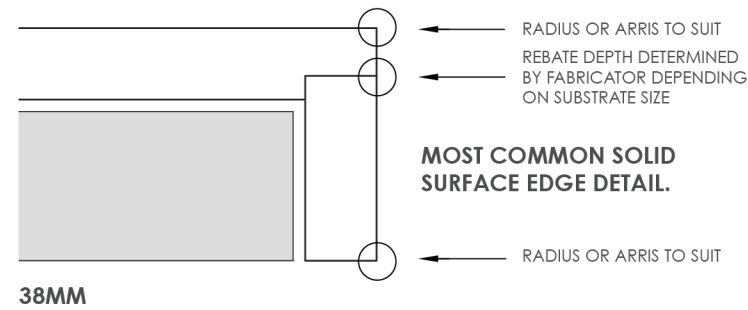


BASIC BENCHTOPS

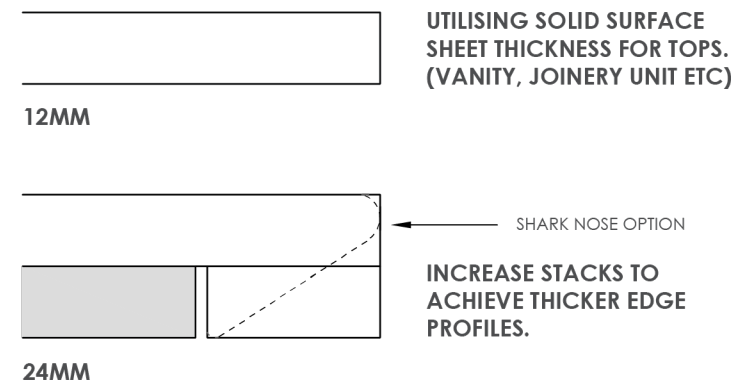
DETAILING NOTES AND PROFILE EXAMPLES

- When specifying 12mm for your Staron countertop;
- Nominate your required edge thickness and profile
- Solid surface is not usually mitred, however a marbled (directional) may be best fabricated with a mitre
- The decision to mitre is best made by the fabricator, however can be discussed when needed
- Join details are noted on this example for education purposes; however are not required on documentation
- Staron Solid Surface can be detailed seamlessly
- Staron requires support
- Ladder, rail or full support depending upon application will be selected by the fabricator
- Overhang allowance up to 150mm for 12mm and up to 300mm for 38mm
- Larger overhang will require additional forms of support

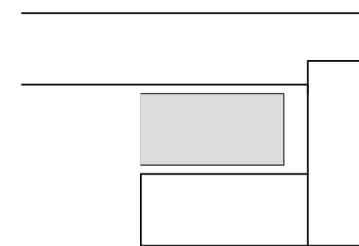
STANDARD DETAILS



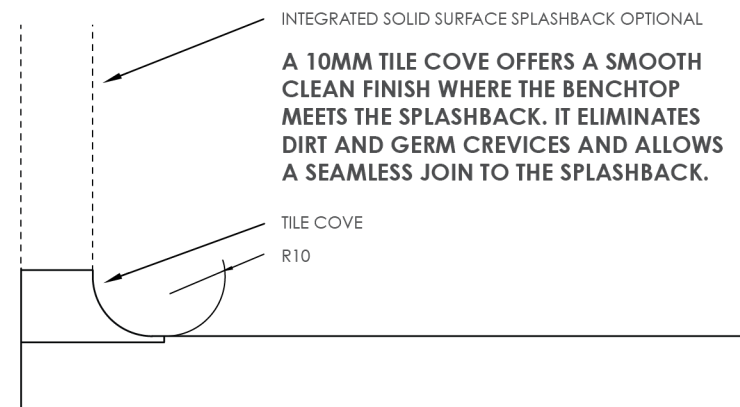
THINNER BENCHTOPS



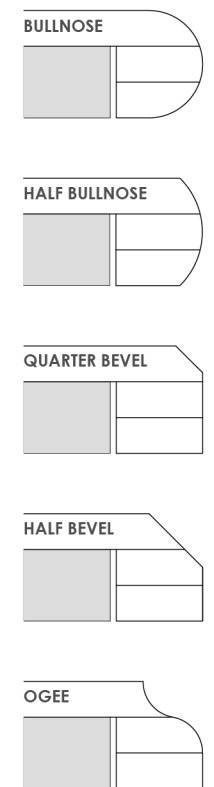
BOTTOM RETURN OPTION



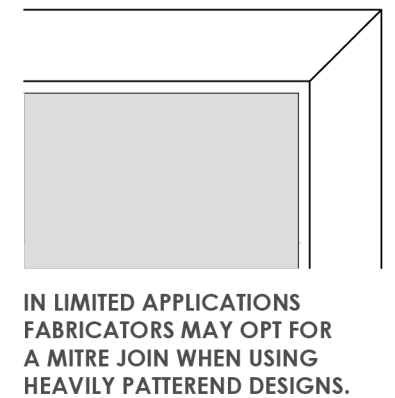
COVE / 10MM TILE COVE



THICKER BENCHTOPS



MITRE JOIN



EXAMPLES OF COMMON SOLID SURFACE DETAILS

<p>staron Example</p> <p>AUSTARON SURFACES</p> <p>austaronsurfaces.com</p> <p>AU 1300 782 766 sales@austaron.com.au NZ +64 211 322 565 +64 221 008 848 sales@austaron.co.nz</p>	<p>TITLE SPECIFYING STARON SOLID SURFACES DETAILING</p> <p>DWG No. STARON EXAMPLE: SPECIFICATION - 001</p>	<p>DOCUMENTATION REMAINS PROPERTY OF AUSTARON SURFACES & CAN ONLY BE USED WHEN SPECIFYING STARON SOLID SURFACE.</p> <p>Architect to determine design suitability.</p> <p>Contact your Staron representative for any colour samples or technical information.</p>
---	---	--

DOCUMENTING EXAMPLE

CODE	ITEM	LOCATION	DESCRIPTION	FINISH	SUPPLIER
SSO1	Solid Surface Staron Other brand names Reconstituted stone	Laundry Benchtop	Thickness: 12mm solid surface 3680 x 760mm 38mm edge profile Thickness: 20mm Thickness: 12mm brand name	Brand: Staron Colour: Sanded Icicle Code: SI414 Brand: Austaron Colour: brand name White	Austaron Surfaces Contact: Email: Mobile: Staron

CROSSED ENTRIES ARE COMMON MISTAKES

CORRECT PRODUCT DESCRIPTIONS

Acrylic / Solid Surface: Mineral blended with Acrylic Resin

Reconstituted Stone: crushed Stone/Quartz blended with Polyester Resin

Porcelain/Ultra-Compact: Glass, Porcelain and Quartz

Brands of Solid Surface: are not a product description

THICKNESS EQUIVALENTS

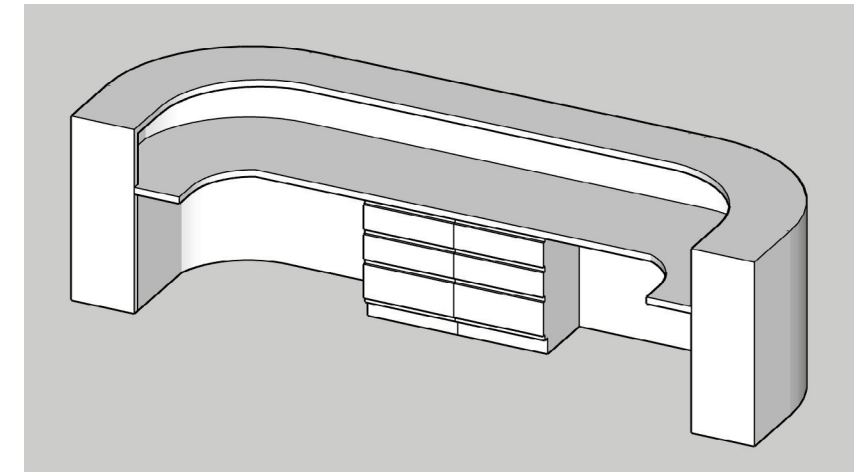
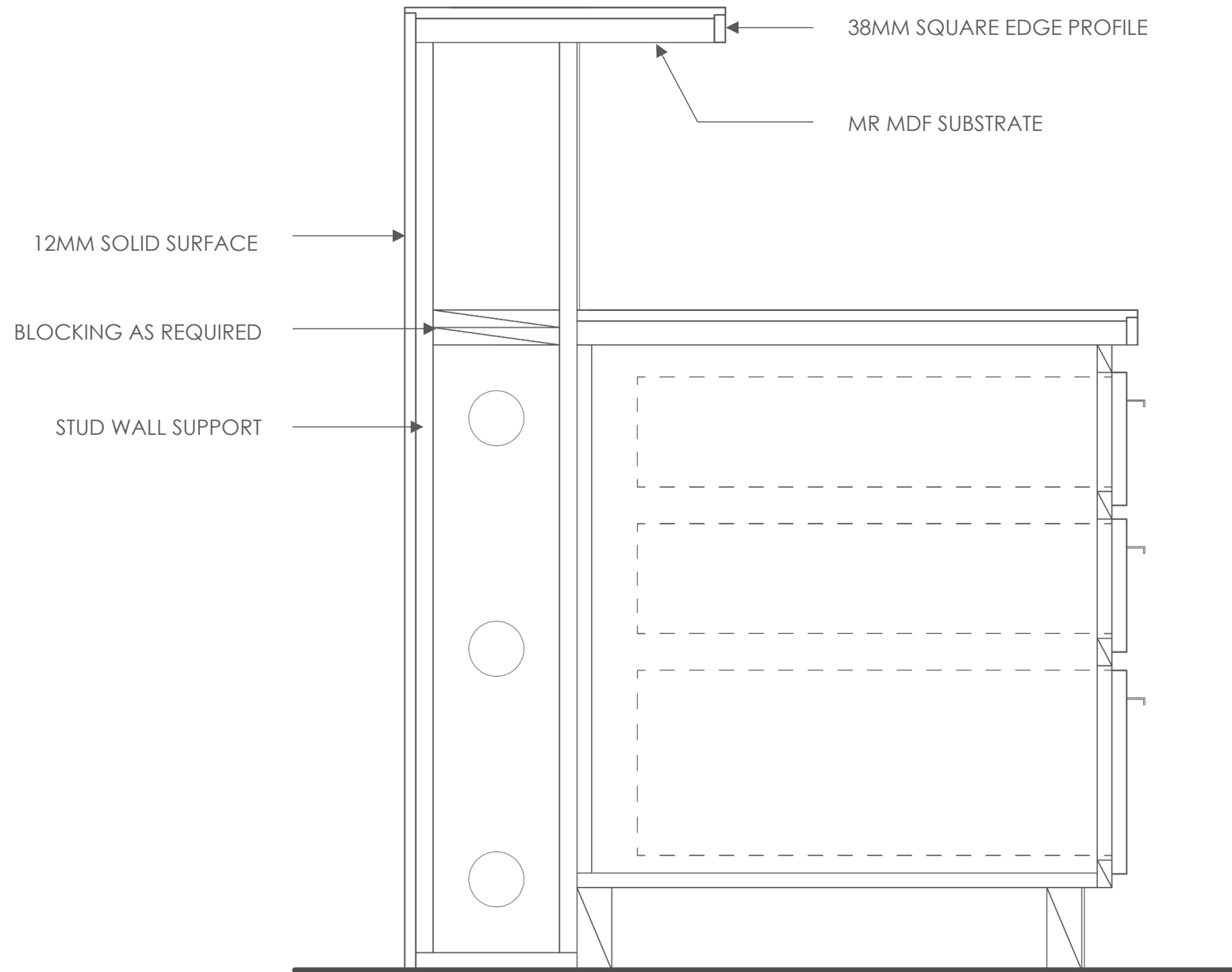
20mm Reconstituted Stone = **24mm Acrylic / Solid Surface**

40mm Reconstituted Stone = **38mm Acrylic / Solid Surface**

 AUSTARON SURFACES austaronsurfaces.com AU 1300 782 766 sales@austaron.com.au NZ +64 211 322 565 +64 221 008 848 sales@austaron.co.nz	TITLE SPECIFYING STARON SOLID SURFACES DETAILING	<p>DOCUMENTATION REMAINS PROPERTY OF AUSTARON SURFACES & CAN ONLY BE USED WHEN SPECIFYING STARON SOLID SURFACE.</p> <p>Architect to determine design suitability.</p> <p>Contact your Staron representative for any colour samples or technical information.</p>
	DWG No. STARON EXAMPLE: SPECIFICATION - 002	

VERTICAL JOINERY EXAMPLE

- Staron requires support
- A sturdy rigid support is essential
- Stud wall or similar variation



staron
Example

AUSTARON
SURFACES

austaronsurfaces.com

AU 1300 782 766 | sales@austaron.com.au

NZ +64 211 322 565 | +64 221 008 848 | sales@austaron.co.nz

TITLE

SPECIFYING STARON SOLID SURFACES

DETAILING

DWG No.

STARON EXAMPLE: SPECIFICATION - 003

DOCUMENTATION REMAINS PROPERTY OF AUSTARON SURFACES & CAN ONLY BE USED WHEN SPECIFYING STARON SOLID SURFACE.

Architect to determine design suitability.

Contact your Staron representative for any colour samples or technical information.