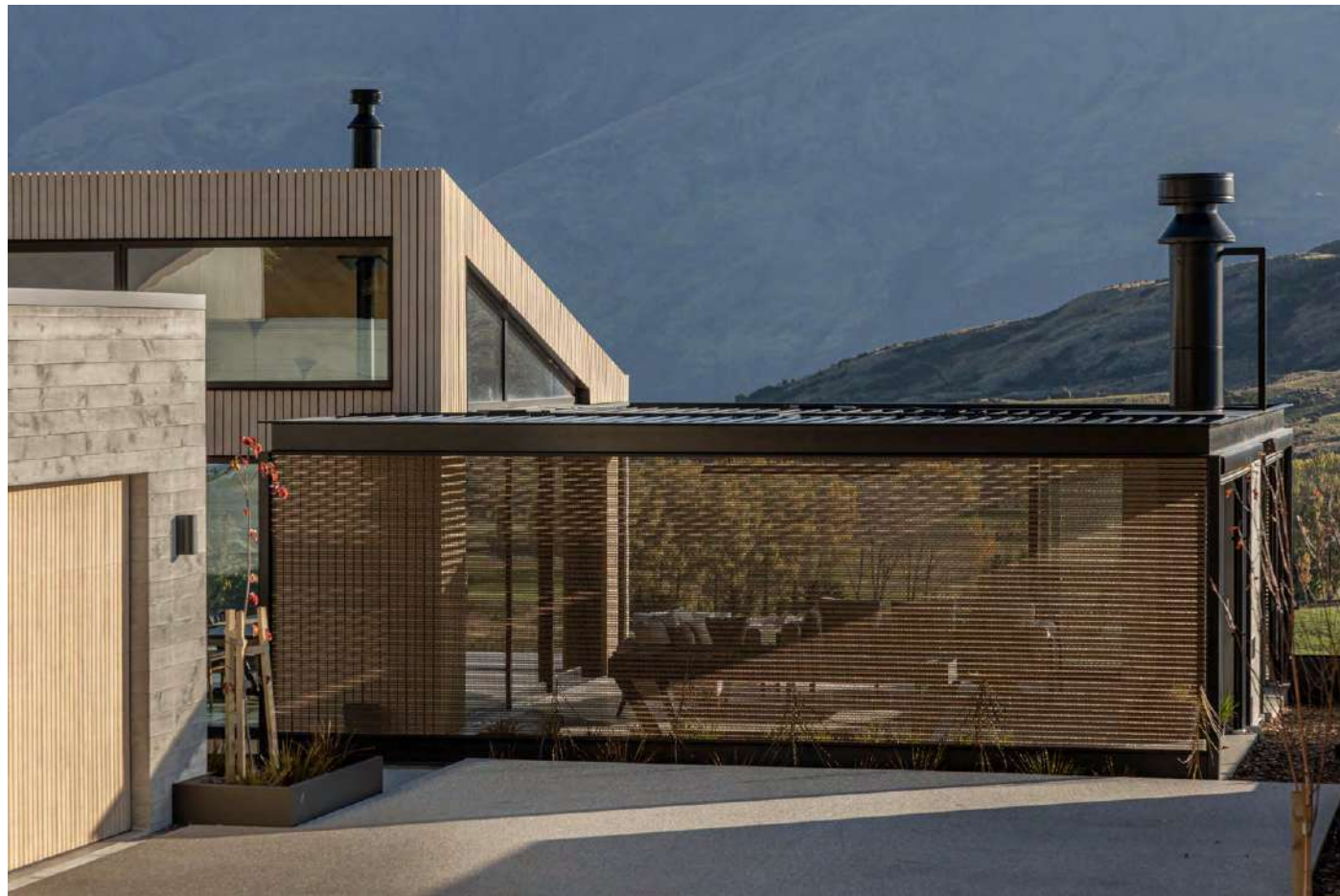


AUSTARON SURFACES

Inspire **Imagine** Create™

THE RESIDENTIAL EDIT



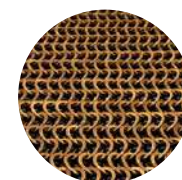
Striving to strike a delicate balance between privacy and openness with Kaynemaile® Architectural Mesh. When constructing a magnificent home in a breathtaking location, it is crucial to consider the appropriate finishes that enhance rather than diminish the surrounding view.

The Kaynemaile Mesh provided a distinctive feature screen that seamlessly blended with the property while simultaneously making a statement, without undermining other elements.

“The architects envisioned the advantages of integrating Kaynemaile Architectural Mesh into the home.”

Kaynemaile®  R.E/8

FEATURED:



BRONZE



DESIGNER: MAJA MARSHALL

PHOTOGRAPHER: JOHN WILLIAMS



DESIGNER: CLEVER CLOSET COMPANY

Silica free
Polyester free

staron®

Solid Surfaces

by **AUSTARON**
SURFACES

Staron® Solid Surfaces are manufactured using a blend of Silica-free mineral and premium acrylic resin. The non-porous nature of Staron means that no stain is ever permanent, providing a durable application that is both hygienic and easy to clean. In addition to high-strength surfaces and an inconspicuous joining method that eliminates dirt-trapping crevices.

Staron is repairable, renewable and UV stable. Even after years of use it can simply be sanded and restored to its original condition. Staron does not have or require any finishing polishes or sealers; it is the same solid material throughout its thickness.

Staron is a premium Silica-free solid surface offering an abundance of design potential to the building industry. Staron Solid Surfaces are Group 1 Fire rated to AS5637.1 (AUS) & Group 1S Fire rated to C/VM2 (NZ).



Made in South Korea



AU - Group 1 Fire Certificate
Result to AS5637.1
(AS ISO 9705: Full scale room test)



NZ - Group 1s Fire Certificate
Result to C/VM2
(AS ISO 9705: Full scale room test)



Silica & Polyester Free



Hygienic & Stain Resistant



Seamless Design Flexibility



Illumination & Routing
Opportunity



Colour Versatility



Weatherability & Durability



Greenguard Certified
& Gold Certified



Environmental Management
System Certified ISO 14001



National Sanitation Foundation
for Food Safety Certified

staron®

Solid Surfaces



FEATURED:



SUPREME
OCEAN VIEW

“The kitchen design was impeccably executed. The material selections proved both practical & aesthetically pleasing.”

The inspiration for this beautiful award winning kitchen arose from the exterior design of the new home, which prominently featured curved elements in the home's façade.

With a rather minimal client brief, the goal was to create a kitchen that exuded a light and warm ambience, with a soft and non-masculine colour palette.

Staron® in Supreme Ocean View not only met the sought-after palette criteria but also delivered the seamless design outcome envisioned for the large island bench.



Silica free
Polyester free

DESIGNER: AM INTERIOR STUDIO

PHOTOGRAPHERS: BROCK BEAZLEY, JACOB JON, MITCHELL KEMP

MORE THAN MEETS THE EYE

The owner of this home did not want to exclude the humble hallway journey from their design brief, Creating a slightly wider hallway with set-back nooks gave the perfect foundation to design a standout feature of the linen cupboards, display shelving and home office.

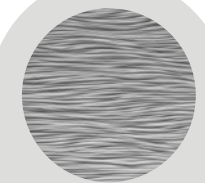
Taking advantage of the design versatility and benefits of Solid Surface, Staron Bright White was the product of choice for both the hallway linen cupboards and home office desk. Mario Romano Walls in Lake design was selected for the 6 cupboard doors, routed directly into Staron® Solid Surface. This not only cleverly concealed the hallway cupboards but, in the process, created a textured artwork that looks stunning and feels amazing!

With white being the colour of choice for the home office desk, the need for a product that is easy to maintain while also comfortable to work at meant that Staron was again well suited to this application. A mitred front edge detail of both bench and drawer gives a streamlined appearance to the desktop. The hallway journey is forever changing with light and shadows constantly throughout the day and evening the Mario Romano design captures this perfectly.



MARIO
ROMANO

WALLS



FEATURED:
LAKE



BRIGHT WHITE



Kaynemaile® RE 8™

by **AUSTARON**
SURFACES



Made in New Zealand



Group 1s Fire Certificate
Result to ISO9705 Room
Test

RE/8™ Bio-circular Architectural Mesh by Kaynemaile® is a strong yet highly flexible and lightweight mesh, created with seamlessly interlinked polycarbonate rings.



High Airflow

Screens can be made to any height or width without joins. RE/8 mesh is the perfect screening solution for your indoor and outdoor areas.



Quick & Easy Installation

It also provides energy-efficient solar protection and privacy screening in exterior projects. In addition, the mesh is also ideal for interior applications that require partitions, space dividers, or ceiling features.



70% Solar Reduction



Weatherability



Unlimited Size & Scale



Eco Conscious
Manufacturing



Extremely Strong



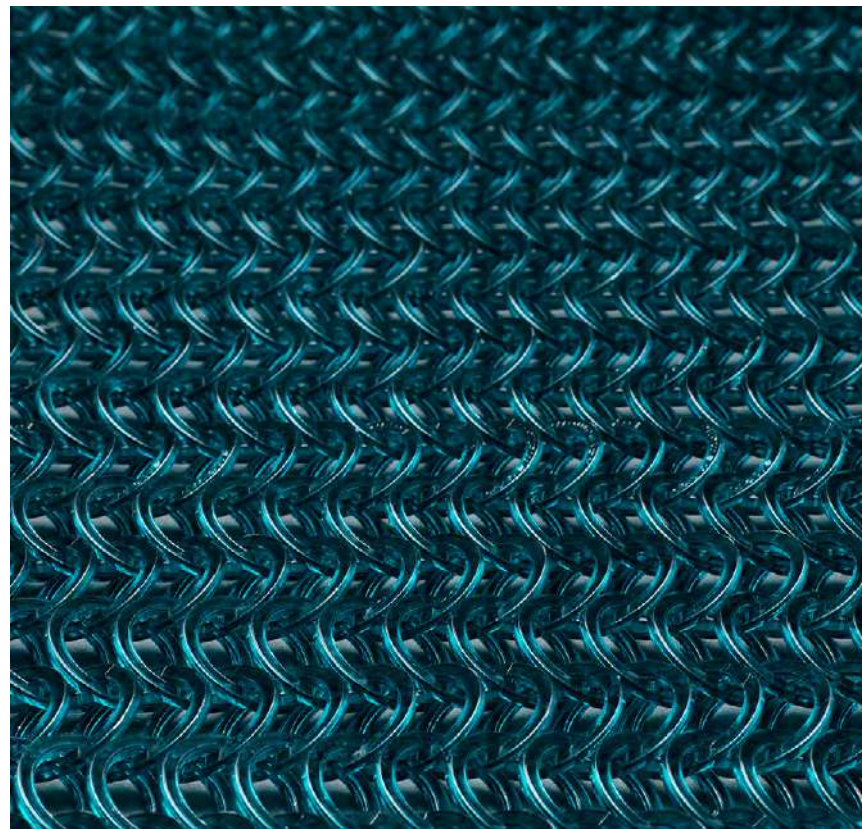
Durability



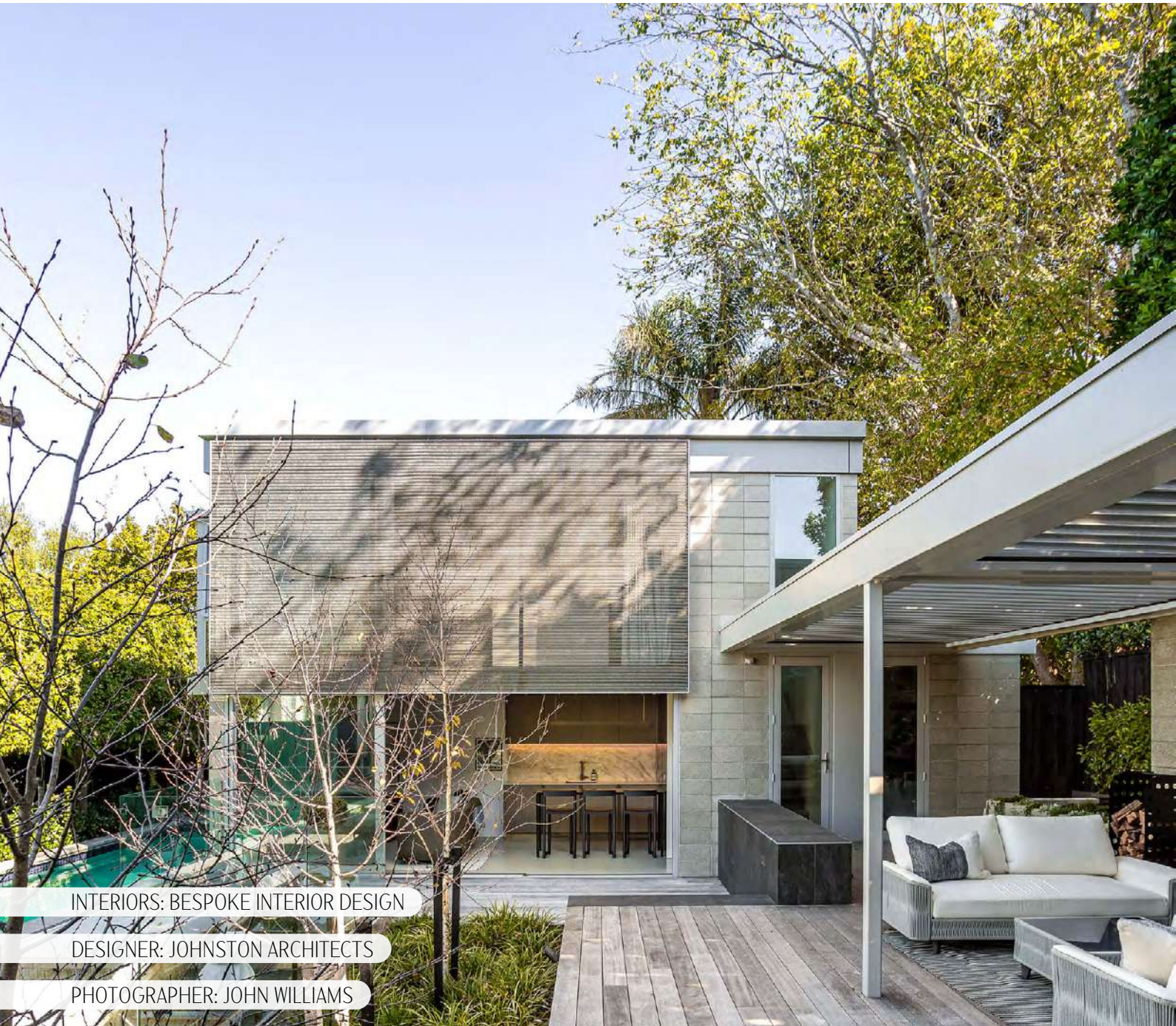
Corrosion Free



Lightweight



“Amidst the backdrop of the soothing greys is a striking feature that catches the eye.”



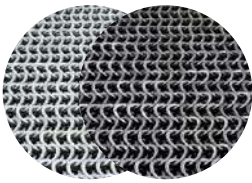
INTERIORS: BESPOKE INTERIOR DESIGN

DESIGNER: JOHNSTON ARCHITECTS

PHOTOGRAPHER: JOHN WILLIAMS



FEATURED:



SILVER
(DISCONTINUED)

STEEL
(ALTERNATIVE)

Nestled in Remuera, New Zealand this stunning guest house is a charming addition to a 1950's modernist residence and a true haven for anyone visiting. Its picturesque setting, adorned with a palette of soft, subtle colours featuring various shades of greys and weathered timbers,

Crafted from Kaynemaile® Architectural Mesh, this screen serves a dual purpose: it provides privacy to the bedroom, giving occupants a sense of privacy without completely blocking off the view of the outdoor entertainment area. In addition, utilising Kaynemaile for this application not only ensures privacy but also offers unobstructed views from the bedroom.

Kaynemaile®  R·E/8



DESIGNER: KATE ANDERSON DESIGN



acrylic couture®

FEATURED:



CANGIANTE
COPPER

In the quest for a striking feature to conceal the beverage cabinet, Acrylic Couture® in Cangiente Copper was meticulously chosen for this stunning sliding door.

Its elegant radiance not only introduces an intriguing focal point but also enhances the overall allure of this superb apartment.



A RICHNESS THAT WILL EVOKE YOUR SENSES



staron®
Solid Surfaces



FEATURED:
BRIGHT WHITE

Silica free
Polyester free

BUILDING A COHESIVE HOUSEHOLD

The vision for this design was to create a space that not only looked good but was also liveable and practical. Taking a 'less is more' approach to their new build is highlighted by sleek finishes, modern materials, clean lines, and a neutral and light palette.

“Staron is placed perfectly within the carefully selected collection of materials used across the project.”



DESIGNER: DARREN JAMES INTERIORS



staron®
Solid Surfaces

It is no surprise that this beautiful home is an award-winning project. Design by Darren James Interiors, a Brisbane based design studio committed to delivering unique bespoke residential projects. With many years of devoting themselves to building projects for their clients, Bayview One was an opportunity to create something special for their own family.

Staron® is placed perfectly within the carefully selected collection of materials used across the project. Featured throughout the property, from the working spaces like the kitchen, scullery and study to the wet areas of the powder room, main bathroom and laundry.



DESIGNER: DARREN JAMES INTERIORS

acrylic couture®

by **AUSTARON**
SURFACES



Made in Italy



Superior Quality



Non - Toxic



UV Resistant



Illumination Opportunity



10 Year Exterior Guarantee



30 Year Interior Guarantee



Ethically Sourced



Hand Crafted



Halogen Free



Biophilic Design

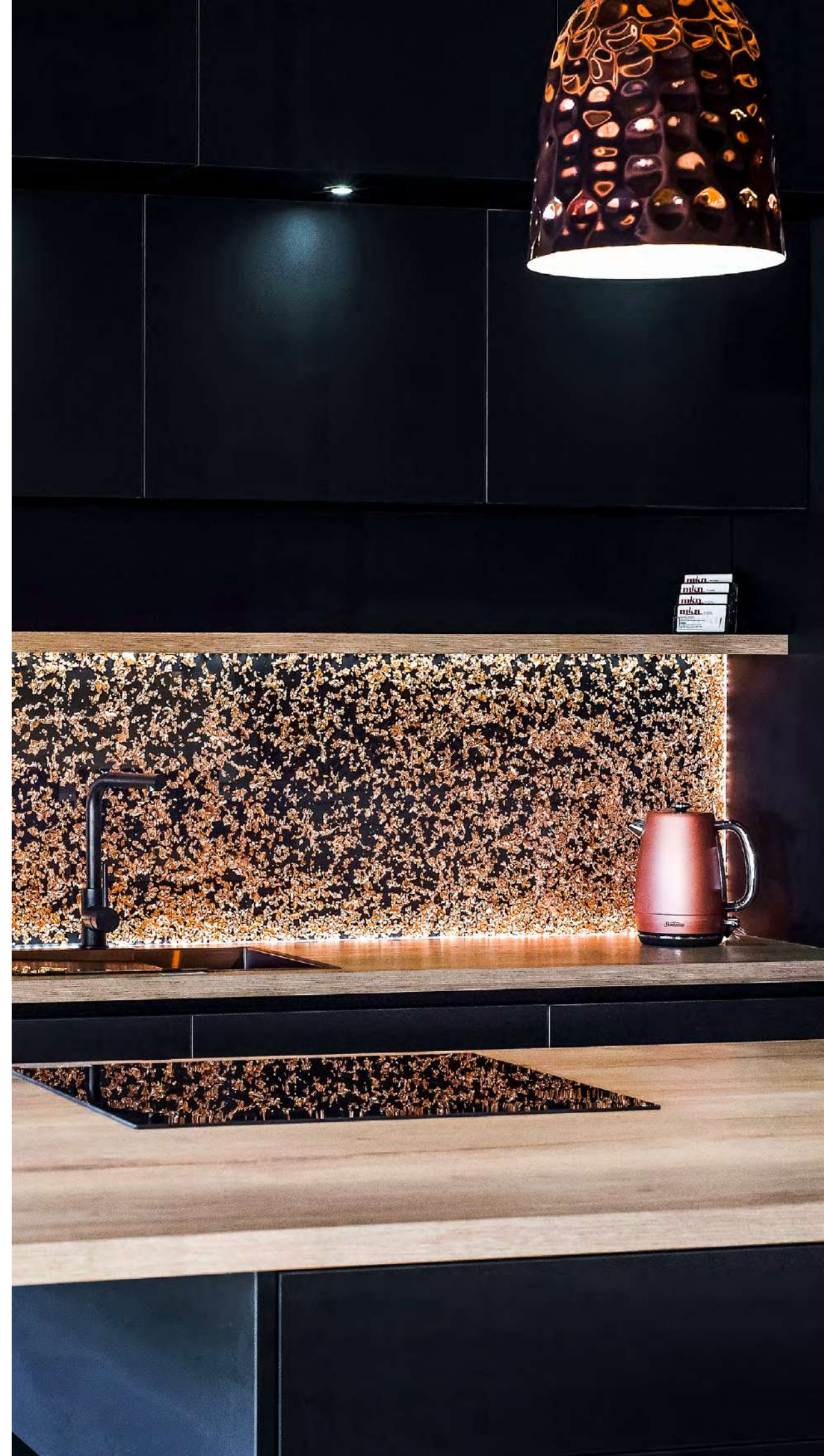
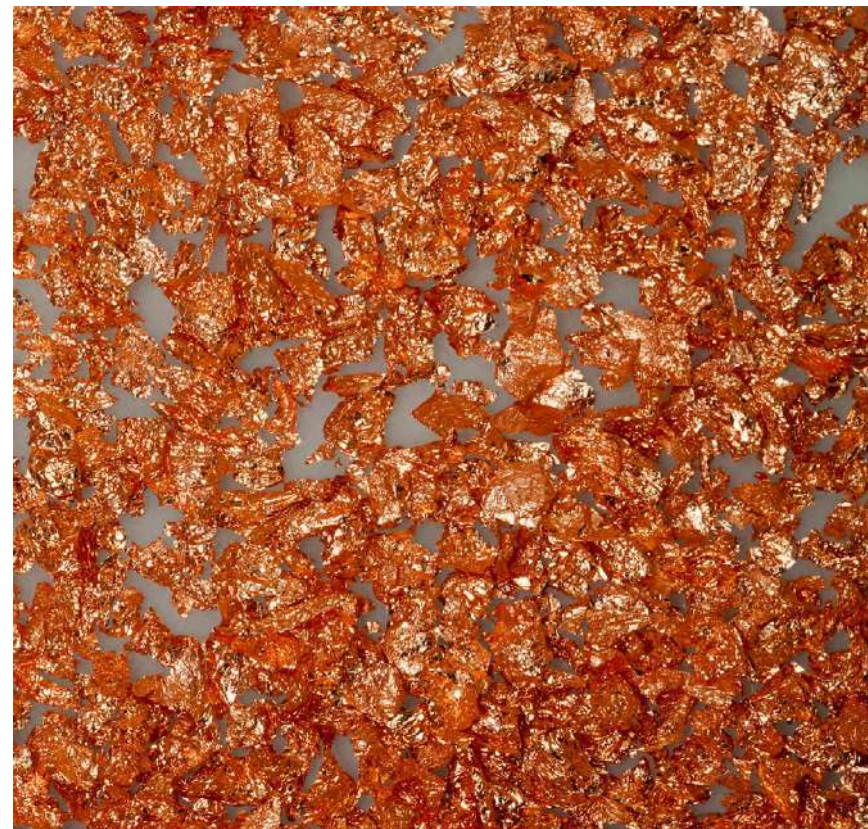


Wet Area

Acrylic Couture® features a stunning collection of acrylic decorative panels that can be used within both interior and exterior applications.

Ethically sourced fabrics, feathers, and other decorative particulates are embedded within the panels; a hand-crafted product, each panel is an individual creation.

Acrylic Couture is modified with the inclusion of special nanoparticles for the extremely efficient scattering and reflection of light. Designs can be used beautifully as a decorative panel or as the foundation for the creation of bespoke lighting and furniture pieces.



acrylic
couture®

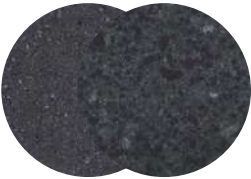
When it comes to crafting a special space to unwind, a stylish bar offers the ideal setting to enjoy quality time with friends and family, especially when it's within the comfort of our own home.

This beautiful Acrylic Couture® feature instantly captures the attention of every visitor. With integrated lighting enhancing its allure, the feature panel makes a lasting impression, both during the day and in the evening. Utilising Acrylic Couture for the shelf creates a striking visual, with bottles seemingly floating against the wall.



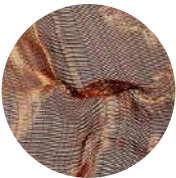
LIGHTING APPEAL
FOR THE HOME BAR

FEATURED:



QUARRY STARRED
(DISCONTINUED)

TEMPEST CAVIAR
(ALTERNATIVE)



CANCELLO
COPPER



MARIO
ROMANO

WALLS

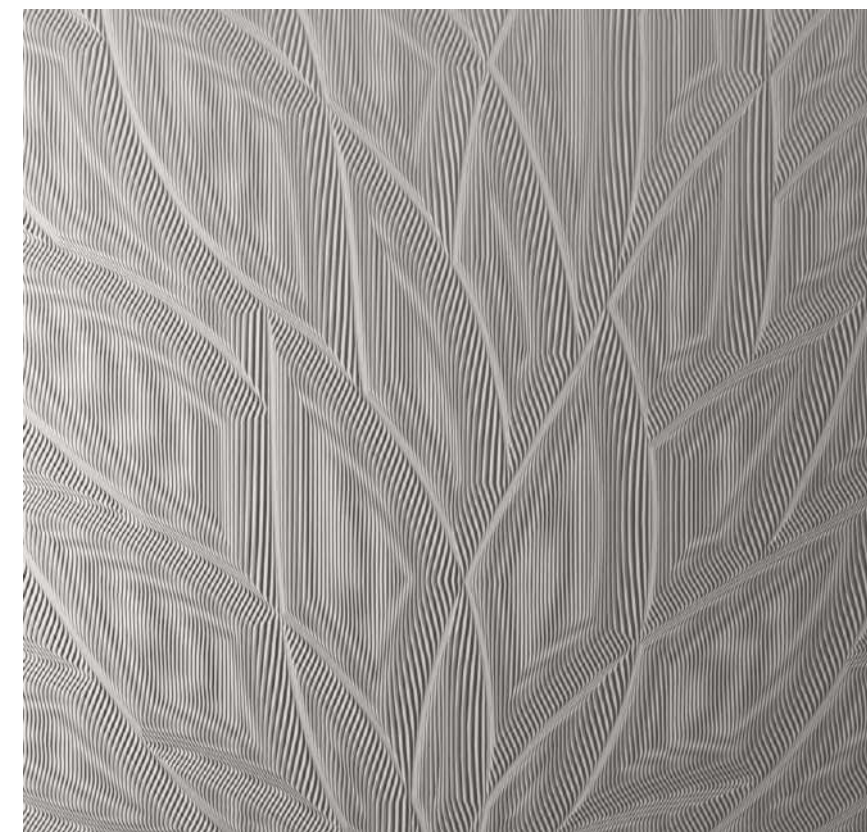
by **AUSTARON**
SURFACES

Mario Romano Walls® (MR Walls) Add tactile and visual texture to both interior & exterior spaces. With an extensive selection of artistic designs to choose from, it's easy to create feature walls and joinery with MR Walls. Being a low-maintenance, grout-free, non-porous application. MR Walls is an excellent alternative to tiles.

Create a bespoke outcome for each application - designs are created to the required dimension and joined together like a puzzle piece. This unique joining method offers unlimited scale and flexibility. It is simple to install and suitable for both backlighting and curves to be included in designs.

Choose from 40+ designs or create a custom pattern.

All designs are carved into Staron Solid Surfaces.



Processed Locally



AU - Group 1 Fire Certificate
Result to AS5637.1
(AS ISO 9705: Full scale room test)



NZ - Group 1s Fire Certificate
Result to C/VM2
(AS ISO 9705: Full scale room test)



Silica & Polyester Free



Hygienic & Stain Resistant



Seamless Design Flexibility



Illumination & Routing
Opportunity



Colour Versatility



Unlimited Scale



Quick & Easy Installation



Durability



Biophilic Design



Greenguard Certified
& Gold Certified



FEATURED:



FLAME

MARIO ROMANO | WALLS



FEATURED:



SUPREME MORNING SKY



DESIGNER: KATE ANDERSON DESIGN

The brief for this coastal renovation was to design a kitchen with a wow factor, that was perfect for entertaining family and friends. With a predominately white palette selected for this large kitchen, the textures and views do the talking.

The new kitchen offers clean lines and is uncluttered, having selected Staron® in Supreme Morning Sky to offer a hint of colour across all benchtops and island cladding. Incorporating texture and another light source into the island counter, Mario Romano Walls in the design Flame, was used to create this island feature. Mario Romano Walls were also clad to the existing joinery display unit that was part of the original open-plan office area.



COASTAL
LIVING WITH
ALL THE
TRIMMINGS

Ambiloom® Mirror 1700

Size
550mm x 1,700mm x 50mm (W x H x D)

Max. power consumption of LEDS
7 watt

Weight
21 kg

Suspension
horizontal or vertical

Item No.
61BS-6000-1010

RRP.
\$1974,50



Ambiloom®

The Ambiloom® Mirror collection includes modern wall mirrors in three different formats with ambient lighting as an additional function.

For this visual to be achieved, the composite of high quality, translucent mirror glass and ETTLIN LUX® fabric, is backlit by LEDs integrated on the back plate.

The lighting scenario unfolds via a touch sensor integrated into the aluminum frame. Three-dimensional light lines shine on the surface of the mirror. These give interiors optical depth and a special atmosphere. When switched off, the mirror image is clear.

Ambiloom® Mirror 800

Size
400mm x 800mm x 50mm (WxHxD)

Max. power consumption of LEDS
3,75 watt

Weight
8 kg

Item No.
61BS-6000-0505

RRP.
\$1094,50



Ambiloom® Mirror 750

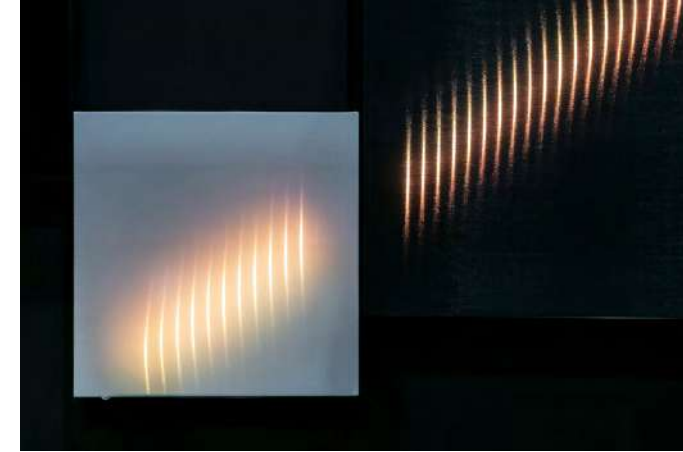
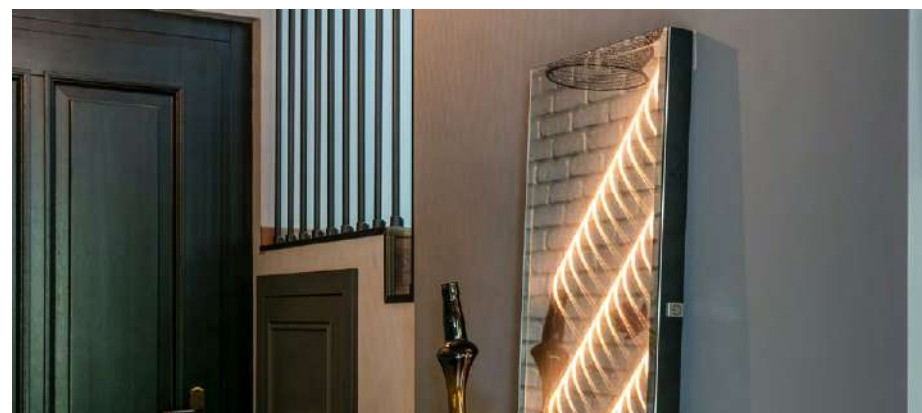
Size
750mm x 750mm x 50mm (WxHxD)

Max. power consumption of LEDS
2,5 watt

Weight
12 kg

Item No.
61BS-6000-750Q

RRP.
\$1534,50



LIMITED EDITION!



The Ambiloom® Pendant is a ceiling-mounted pendant luminaire with a textile surface. In addition to a functional downlight, the luminaire also has ambient lighting.

The pendant lamp impresses with its textile surface, functional downlight and ambient lighting effect.

For a more subtle effect, the luminaire is operational without the inclusion of a light bulb and harmoniously blends into various interiors.

Ambiloom® Pendant 250



BLACK
Reflector Black

Item No.
61PL-2506-00BL

RRP.
\$874,50

Size
ø 200mm
250mm



BRASS
Reflector Brass

Item No.
61PL-2506-00BR

RRP.
\$874,50

Canopy
ø 95mm
H 24mm



CHROME
Reflector Black

Item No.
61PL-2506-00CH

RRP.
\$874,50

Canopy Length
Approx. 1,45m

Weight
3 kg



TIMBER
Reflector Black

Item No.
61PL-2506-00WD

RRP.
\$929,50

Cable
Textile Cable Black

Ambiloom® Floor 250

Size Lampshade
ø 200mm
250mm height

Total Height
ca. 1,500mm

Weight
5 kg

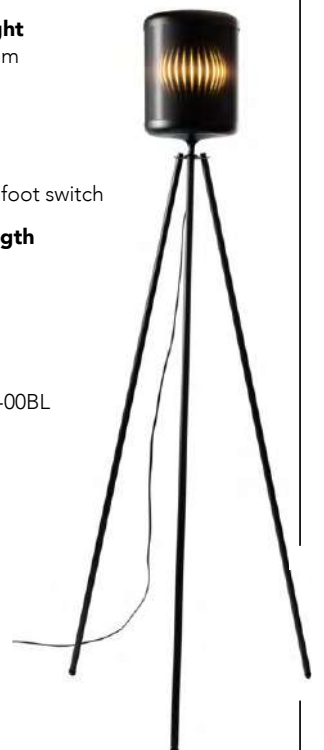
Cable
Black with foot switch

Cable Length
3,000mm

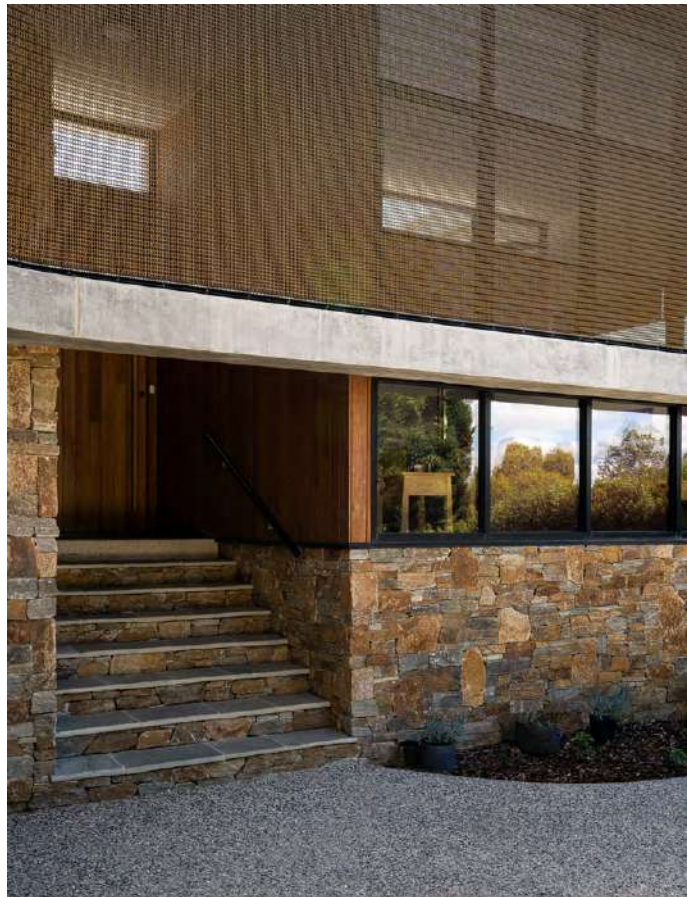
Colour
Black

Item No.
61FL-2506-00BL

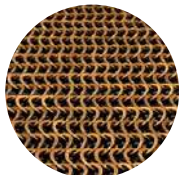
RRP.
\$984,50



“Achieve privacy without obstructing the view.”



FEATURED:



BRONZE

Prioritising a product that would offer privacy screening and not obstruct the inside-out view for many windows of the home, the clients selected Kaynemaile® Architectural Mesh in colour Bronze. The foundation of the curved concrete offered a perfect setting for the addition of Kaynemaile Architectural Mesh to the front facade.

Manufactured in one single piece and only requiring perimeter fixing for this application meant that additional subframes were not required.

This is not only a perfect solution for privacy, but the mesh also captures the sunlight throughout the day creating visual changes that can be enjoyed by passersby.



DESIGNER: LAYTON HOMES

WHAT WE LOVE



1. ILLUMINATED AMBIENCE:

Integrating lighting design within the installation creates a captivating display, enhancing both the aesthetic and functional aspects of the space. (BY AOTA ARCHITECTS IN ASSOCIATION WITH TKD ARCHITECTS, PHOTOGRAPHED BY ADAM LETCH)

2. ELEGANT CURVATURE:

The fabric-like nature of the mesh enables it to flow gracefully with curved fixing details. Its unique properties also mean there are no size limitations, providing versatility for architectural creativity.

3. FLEXIBLE SPATIAL DESIGN:

Lightweight and easy to install with a simple hanging system, the mesh is ideal for creating distinct rooms within larger spaces. (BY JOE SNELL)

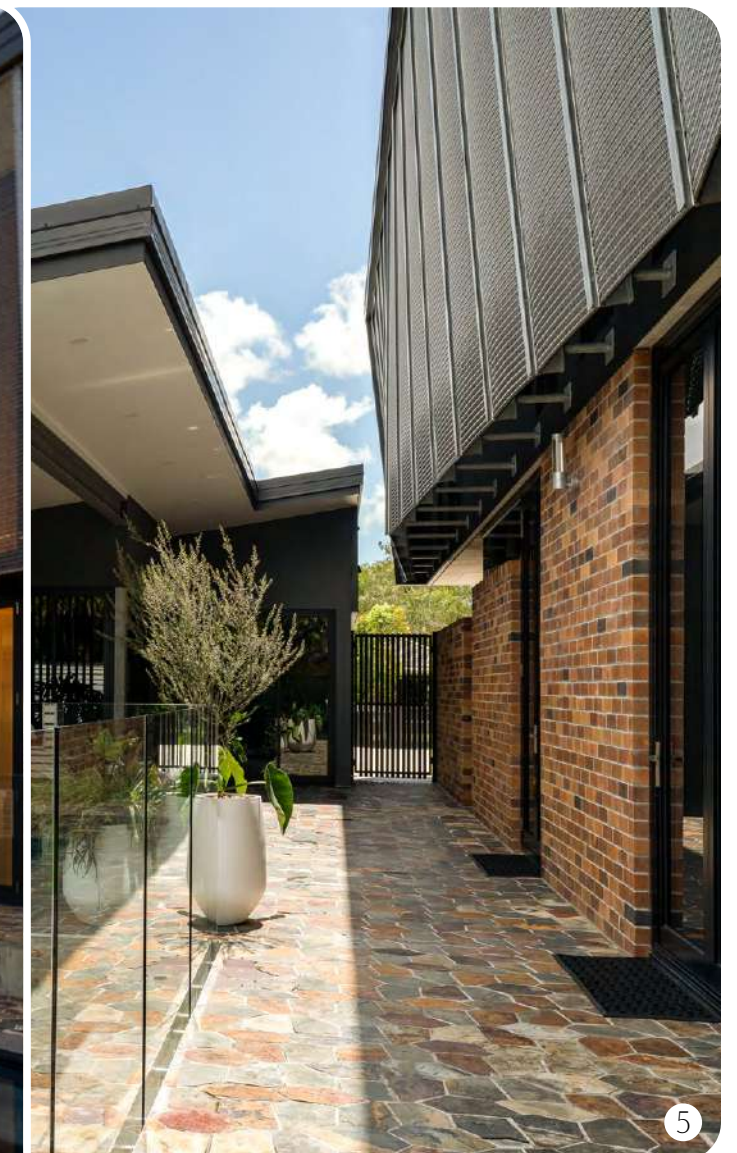
4. SOLAR & VIEW PROTECTION:

Providing building protection against the elements while preserving outward views, Kaynemaile mesh offers a subtle visual with an effective defence.

5. DYNAMIC APPEARANCE:

Adding a soft and ever-changing aesthetic to a building's facade, the mesh transforms from day to night, enhancing the architectural appeal. (BY TOUCHES INTERIORS)

Kaynemaile®  R.E/8™

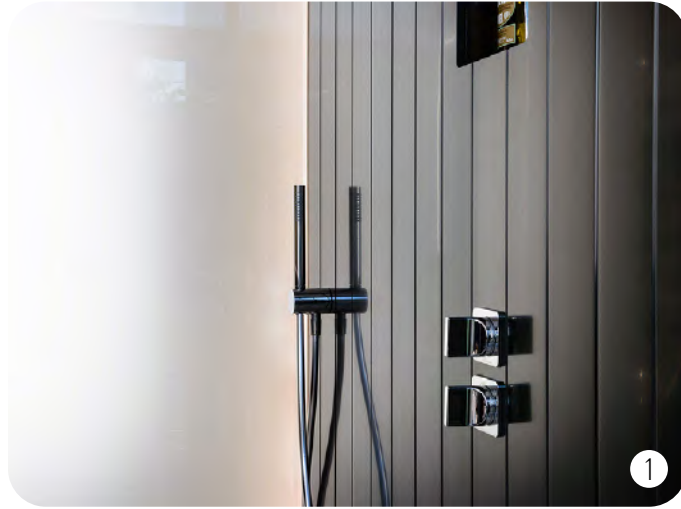


6. UNOBTRUSIVE VIEWS:

RE/8™ mesh seamlessly integrates into no-access areas without blocking the view, maintaining visual transparency and airflow.

EVERY SURFACE TELLS A STORY

WHAT WE LOVE



1. VJ PANELLING:

Perfect for both dry and wet areas, eliminating the need for grout & painting. (BY BYA ARCHITECTS)

2. SLEEK SHADOW LINE DETAIL:

Enhances aesthetics & expedites installation. (BY COOPER SMALL)

3. GROUT-FREE:

Eliminate grout for easy cleaning, gas cooktops require greater distance than induction. (BY KBK KITCHENS)

4. NON-POROUS:

Take the stress out of the mess. With Staron no stain is ever permanent, providing a durable no fuss surface that is hygienic and easy to clean.

5. FUNCTIONALITY & UNDERSTATED BEAUTY:

Bright White with a matte finish, complementing various surfaces elegantly. (BY MINOSA DESIGN)

6. COVES AND SEAMLESS DESIGN:

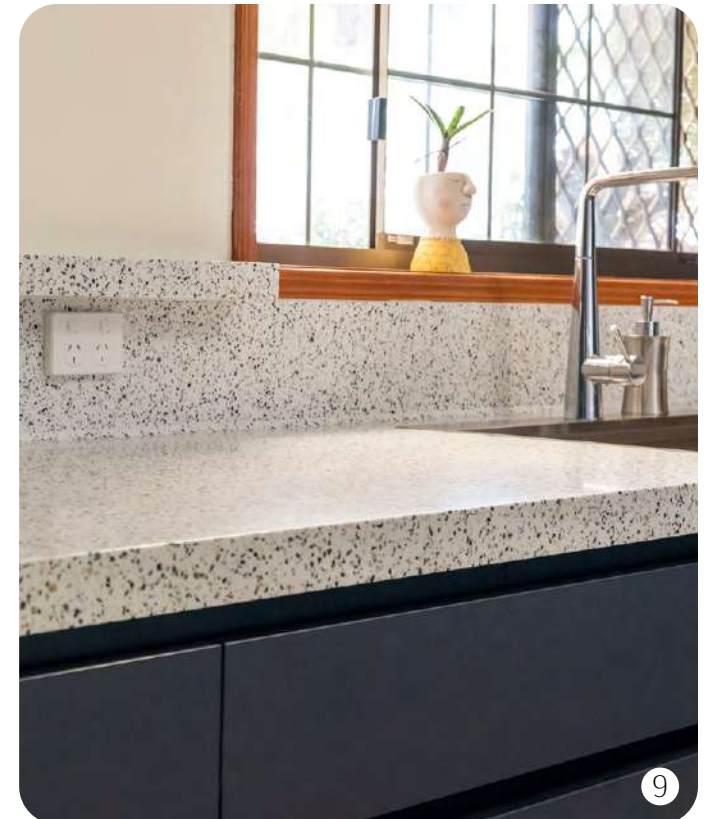
Flowing effortlessly around obstacles, achieving a unified & harmonious aesthetic. (BY MINT KITCHEN GROUP)

7. A 10MM TILE COVE:

Coves offer both functional & aesthetic benefits, making them an ideal choice for projects using alternative splashback surfaces. (BY CONCEPTS UNLIMITED)

Silica free
Polyester free

staron®
Solid Surfaces



8. TEXTURED SPLASHBACKS AND BENCH TO WALL INTEGRATION:

Add texture to splashbacks with the inclusion of a Mario Romano Walls design. Splashbacks can be seamlessly integrated into a Staron benchtop for seamless bench to wall integration.

9. STARON CUSTOMISATION:

Tailored solution for tricky splashback zones, ensuring a perfect fit. (BY KBK KITCHENS)

10. IMBUE YOUR SPACE WITH ALLURE:

Seamless smooth or textured curves and angles add a dynamic interest for bold design. (LEE HARDCASTLE, ENIGMA INTERIORS | AM INTERIOR STUDIO | CONCEPTS BY GAVIN HEPPER)

EVERY SURFACE TELLS A STORY

BEAUTIFUL BRIGHT, AND BLISSFUL

When designing this kitchen, it was important to the owners to capture the breathtaking views of Samford Valley and the surrounding bushland while embracing an all-white palette for the kitchen joinery.

The kitchen was designed with both everyday family living and weekend entertaining in mind, featuring bi-fold doors that seamlessly connect to the inviting alfresco area.

The owners prioritised an easy-to-clean surface and the seamless integration of sinks and coved splashbacks to eliminate the need for silicon.

Since the kitchen captures sunlight and flows into the exterior areas, a UV-stable surface that can withstand outdoor elements was also a priority.

The project maximised the design versatility of Staron® Solid Surfaces, utilising Staron for interior and exterior benchtops, integrated sinks, splashback with integrated shelf, cladding for drawers and cabinets, outdoor tables, and even for the stairs leading to the kitchen.



“The non-porous nature & seamless joins of the material make for a hygienic and easy to maintain kitchen that truly shines.”



DESIGNER: SUBLIME GROUP

staron®
Solid Surfaces



QUASAR WHITE



FEATURED:
ASPEN GLACIER



BRIGHT WHITE



Silica free
Polyester free

SINKS IN FOCUS



1

1. REFINE SINK COLLECTION:
A more contemporary collection of solid surface sinks, offering a smaller radius in design.



1

Enhance your application with an addition from our collection of seamlessly integrated solid surface kitchen sinks.



Eliminating mould and the need for silicone, our integrated collection achieves a seam-free connection between your Staron benchtop & bowl. Staron can also be easily routed for the addition of custom drainers.



2

2. CLASSIC SINK COLLECTION:
A traditional style of solid surface sinks that embrace larger rounded corners.



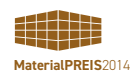
2



Alternatively combine the aesthetics of Staron Solid Surfaces and stainless steel. Specifically made for solid surfaces, sinks are manufactured with rebated internal sides to achieve a flush connection.



staron[®]
Solid Surfaces
Silica free
Polyester free



ORGANOID

NATURAL SURFACES

by **AUSTARON**
SURFACES

Organoid Natural Surfaces® combines the beauty and effects of natural materials with functional interior design in a sustainable manner.

These natural surfaces are available in various unique designs. They are suitable for many decorating uses: as wallpapers or decorative veneers in combination with wood, glass, and acoustic elements.

Organoid Natural Surfaces are pure sensory pleasures for people - you can see, feel and smell them. Due to the gentle production process, the properties of the natural materials are largely preserved, thus all characteristics in terms of look, fragrance and feel are retained.



Made in Austria



Carbon Neutral



FSC - Mix Paper from Responsible Sources



Ethically Sourced



Direct Trade with Farmers



Hand Crafted



Renewable Materials



Organic Natural Materials



Eco Conscious Manufacturing



Aromatic & Tactile



Biophilic Design



Acoustic Design Compatibility

HUMANS & NATURE

We humans are always looking to feel cozy and at ease – be it at home, at work or during our spare time. On average, we spend over 90% of our everyday lives indoors. An interior that incorporates nature helps us relax and feel at home.

Organoid Natural Surfaces combine aesthetics and the positive qualities of natural materials with functional interior design. The collection of natural surfaces creates a good atmosphere and support health, they can help reduce stress, lighten the mood, and increase concentration with their natural aesthetics.



DESIGNER: THIRTYONE DESIGN

PHOTOGRAPHER: VALENTINA SOMMARIVS

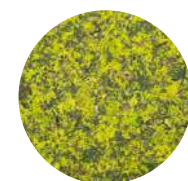


RECENTLY LAUNCHED!

FEATURED:



SKELETTBLÄTTER
MEDIUM

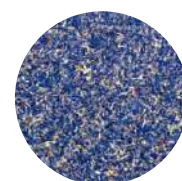


MOOS
HELLGRÜN
PREMIUM

SHOWROOM SÜDITROL, ITALY

ORGANOID
NATURAL SURFACES

FEATURED:



KORNBLUME
BLAU
PREMIUM



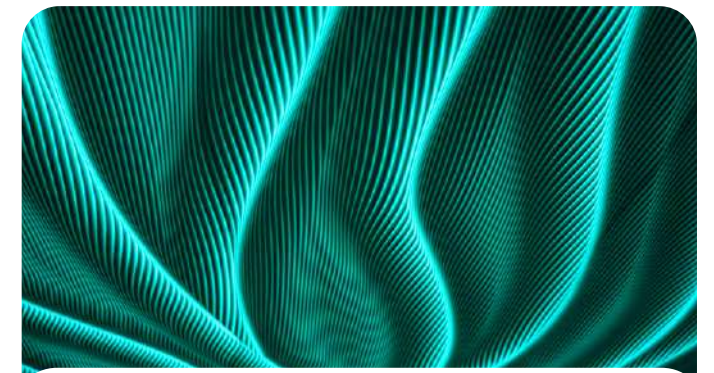
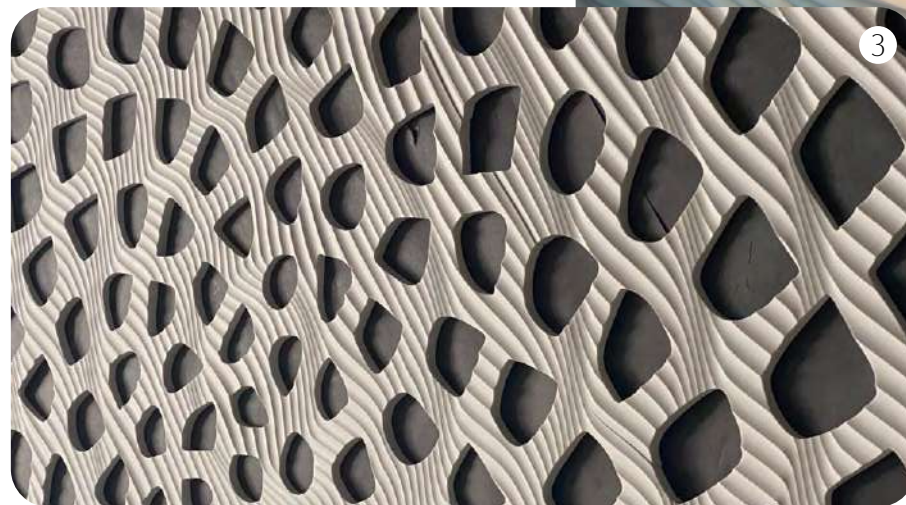
ROSENBLÜTEN
PREMIUM



WILDSPITZE
PREMIUM



WHAT WE LOVE



1. TRANSFORM YOUR BATHROOM:
Grout-free, decorative, and textured walls not only enhance aesthetics but are also a hassle-free alternative to traditional tiling.

2. INTRIGUING LANDSCAPES:
Use available designs or get creative for a custom outcome. Mario Romano walls are an ideal surfacing solution for designing water and artistic features.

3. MAKE A BOLD DESIGN STATEMENT:
Mario Romano Walls technology paired with Staron Solid Surfaces is innovative, unlocking endless design possibilities, allowing for the creation of dynamic, visually striking applications.

4. CAPTIVATING FEATURE WALLS:
Crafted with durable materials, these textured walls boast longevity and eliminate the need for regular painting, ensuring a lasting aesthetic appeal.

5. BEAUTY BEYOND INTERIORS:
UV stable exterior feature walls. Carved in Staron, a resilient surface designed to withstand the elements, these walls offer enduring charm.

6. SEAMLESS INTEGRATION:
Mario Romano Walls' unique puzzle joining system is designed for non-repeating patterns. This innovative approach can be effortlessly scaled to meet the specific requirements.

7. PLAY ON LIGHT:
The textured surfaces achieve beautiful effects with the incorporation of face or back lighting for a stunning feature.

EVERY SURFACE TELLS A STORY

BATHROOMS IN FOCUS



Staron® is not only the perfect surface for seamless vanity design but also an excellent choice for shelving, nooks and seating within wet areas. Unaffected by water, the non-porous nature of Staron makes it an exceptional surface in wet rooms.



staron®
Solid Surfaces
Silica free
Polyester free

This powder room exudes richness with its dramatic dark walls and enchanting wallpaper. The back-lit Staron vanity with integrated sink and coved return detail adds a touch of modern elegance, perfectly complementing the overall design.

The Staron range offers numerous designs perfectly suited for backlighting; the Supreme collection is a stand-out with its exceptional detail.

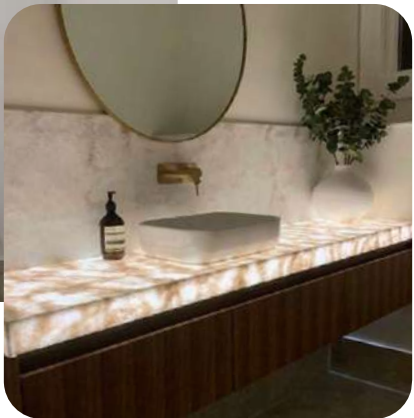


By eliminating the need for silicon, cleaning becomes a breeze, ensuring a sleek and hygienic environment. Fabricated into one piece, this benchtop with integrated cove return and Staron sink seamlessly flows around both walls, offering both functionality and aesthetic appeal in this elegant powder room.



A beautiful soft palette is created using Staron Supreme Ocean View. The back-lit vanity creates an impact in both day and evening settings.

With matching splashback, the Staron flows around providing a nice touch with a small shelf detail under the window. The addition of ambient lighting enhances the inviting atmosphere, making the room extra welcoming.



BATHROOMS IN FOCUS



When dealing with small spaces, the design flexibility of Staron ensures the perfect fit. In this ensuite, the thermoformed curved dropdown edge facilitates movement, maximising the functionality of the room.



DESIGNER: DEAN WELSH DESIGNS



For a minimalist design, Staron offers easy customisation into shallow thermoformed basins, best paired with a low flow tap.

Cladding Staron to all sides of the vanity and the shower wall creates an easy-to-clean and maintain bathroom, enhancing both aesthetics and functionality



DESIGNER: CONCEPTS BY GAVIN HEPPEL

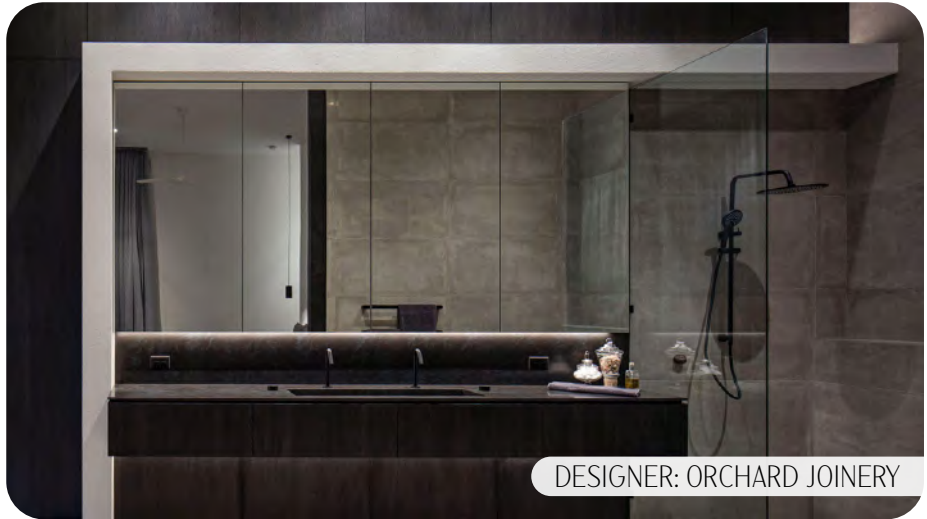
staron[®]
Solid Surfaces
Silica free
Polyester free

Embrace simplicity with slim-line edge detail, the addition of a curved Staron windowsill elegantly ties the design elements together.

Designing within sheet size and thickness assists in minimising fabrication.



DESIGNER: ATER.ARCHITECTS

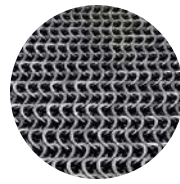


DESIGNER: ORCHARD JOINERY

Explore the realm of bespoke design with custom trough-style vanities and washplanes, perfect for those who crave ample sink space. Ready-to-specify washplane documentation is available via the Austaron Surfaces website.



FEATURED:



STEEL

A WALL THAT WON'T IMPEDE THE VIEW

Seeking a point of difference to enhance the dining room, Kaynemaile® Architectural Mesh was selected in colour Steel, producing a perfect backdrop and at the same time creating the desired hallway separation.

The addition of the mesh embraces the relaxed feel of the space with its soft-to-touch texture and subtle reflective nature. Fixed to the ceiling and nestled between the columns, the mesh flows freely, allowing easy access for cleaning.



Kaynemaile®  R·E/8

DESIGNER: THE SPACE WITHIN



“The production of these products is climate-neutral & the raw materials are from the direct vicinity because we care about honest quality & sustainability.”



KRÄUTERHOTEL HOCHZILLERTAL

DESIGNER: ARCHITEKTURSTUDIO T&S BAUMEISTER GESMBH

EXPERIENCE & ENJOY

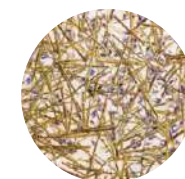
Organoid transforms authentic Alpine hay, vibrant flowers, and leaves into fragrant, natural surfaces. Each design in the collection exudes a captivating, organic aesthetic, infusing any space with life and vitality.

Untreated natural fibres maintain their inherent qualities throughout the production process, ensuring that the surfaces retain their authentic look, feel, and scent.

These surfaces evoke fond memories of immersive experiences in nature, enriching the ambience of any environment with a sense of tranquillity and connection to the outdoors.



FEATURED:



LAVENDEL
MEDIUM

ORGANOID
NATURAL SURFACES

WHAT WE LOVE



ORGANOID
NATURAL SURFACES



1. **TAILORED CRAFTSMANSHIP:**
Beyond stunning feature walls, Organoid surfaces seamlessly integrate with lighting and other design elements, facilitating cohesive and customized creations.

2. **SENSORY JOINERY:**
Available on a variety of natural backing materials, Organoid surfaces seamlessly adapt to a wide range of applications, engaging the senses with a gentle aroma, tactile and visual experiences. (NATURHOTEL MOLIN ZIMMER)

3. **AMBIENT ILLUMINATION:**
Bathed in natural light, Organoid surfaces offer captivating visual interest, while the addition of face or backlighting enhances the ambience, unveiling new layers of design possibilities.

4. **TRANQUIL SURROUNDINGS:**
By harmonizing natural elements, Organoid natural surfaces are perfectly suited to biophilic design, creating a serene and calming environment. (ORGANOID NATURAL SURFACES HOTEL HOCHZILLERTAL)

5. **NATURE'S ESSENCE:**
More than just a natural product, Organoid natural surfaces stand out for their minimal production process, preserving the authenticity of their ingredients and infusing spaces with the essence of nature.

6. **ADDING IMPACT TO JOINERY:**
Even the smallest application of Organoid surfaces creates interest with joinery elements, infusing them with a touch of sophistication and natural beauty. (PARADIESLILIE NIEDERSTEINHOFF SÜDTIROL)

7. **STRIKING PRIVACY SOLUTIONS:**
The exquisite surfaces on translucent backings offer attractive solutions, particularly when applied to glass surfaces. (MARGERITE NIEDERSTEINHOFF SÜDTIROL)

EVERY SURFACE TELLS A STORY

acrylic couture®

Surrounded by a subtropical rainforest, this intriguing home was designed to blend with the landscape. The kitchen needed to reflect the style and mood of what was created externally while capturing the view of the bush and valley below. The owners wanted a space that would be central to family life and entertaining, so the design had to be innovative and sophisticated.

Staron® Solid Surface was used vertically and horizontally in contrasting colours for the island benchtops, cabinet doors, drawer fronts and the outdoor bar table. Stainless steel was used for the back benchtop cooking zone to flow with the industrial vibe.

Looking for a point of difference within the island, Acrylic Couture® is clad to the island front connecting the metal elements within the overall design. Showcasing interlaced and woven metallic fabric which is embedded in acrylic the feature looks stunning and offers ambient lighting.



FEATURED:
STARON
SANDED
DOVER



CANCELLO
SILVER



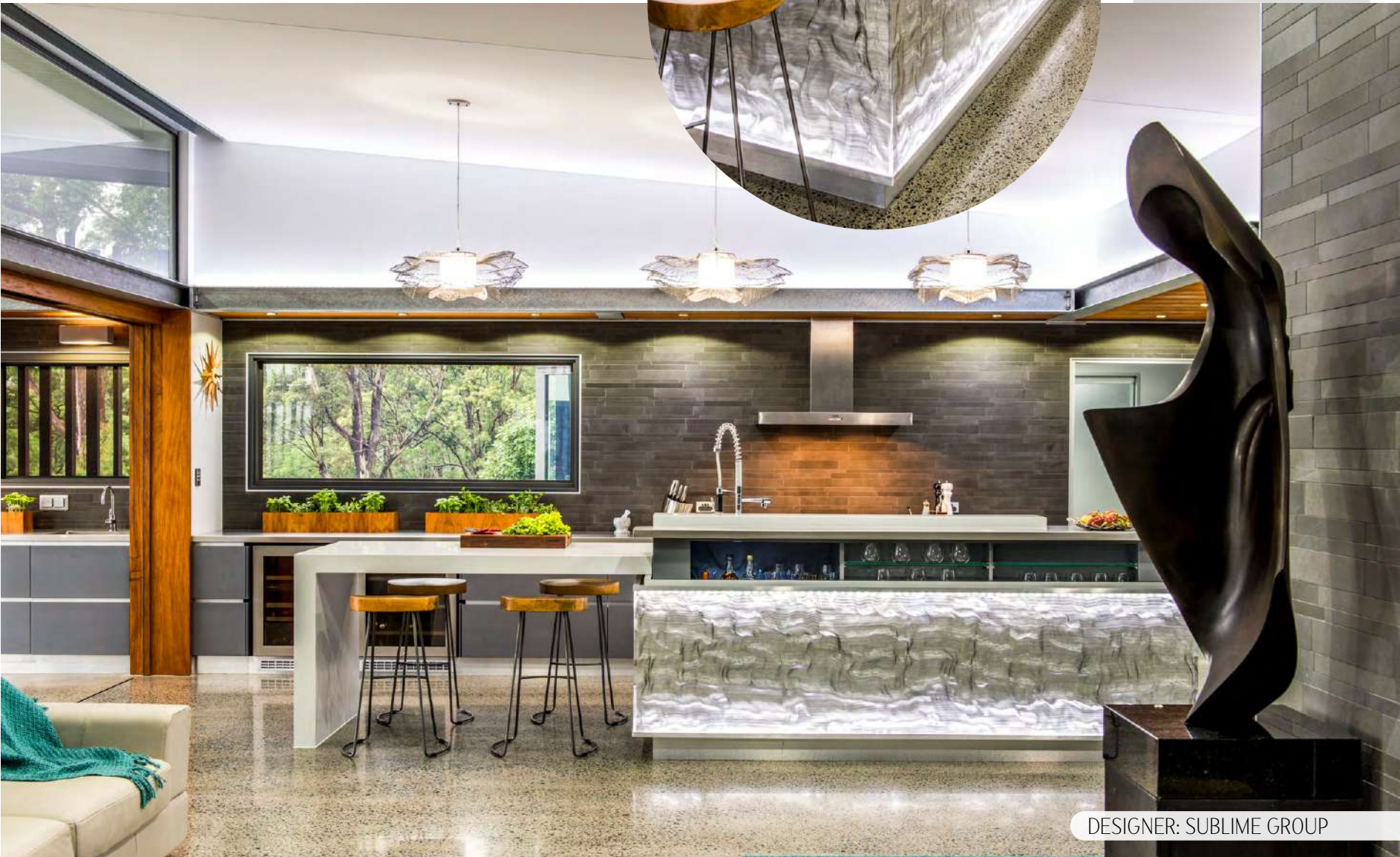
“LED strip lights were used on the edge of the island as mood lighting, illuminating the Acrylic Couture panelling & creating the illusion that the material inside is dancing.”



SLEEK SILVER
(DISCONTINUED)
STEEL
(ALTERNATIVE)

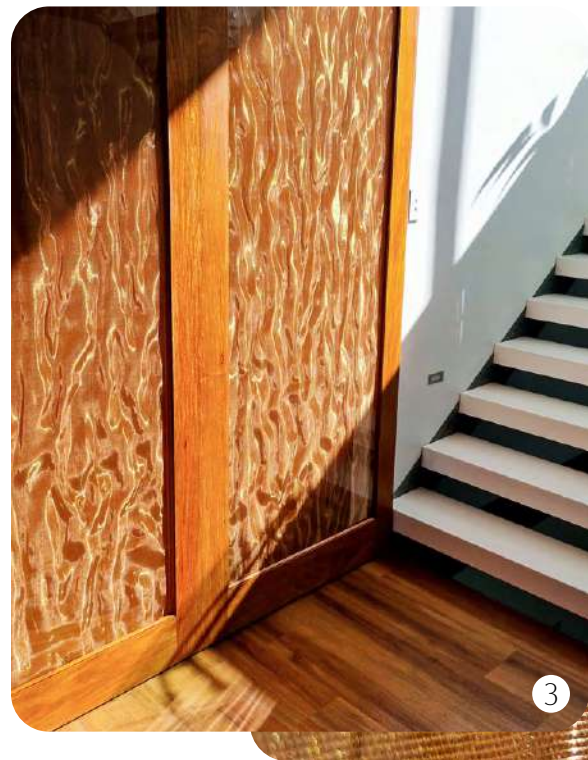


staron®
Solid Surfaces



DESIGNER: SUBLIME GROUP

WHAT WE LOVE



1. Artisanal elegance:
Each handcrafted piece embodies stunning artistic visuals, with inlays flowing freely and encased in the highest quality acrylic resin.

2. Bathroom sophistication:
Featuring the clearest acrylic glass, these elegant panels offer an attractive alternative to traditional glass bathroom panels.

3. Sunlit brilliance:
Acrylic Couture puts on a show in the passing sunlight, showcasing its UV-stable qualities suitable even for exterior applications.

4. Small features, big impact:
Even a subtle incorporation of Acrylic Couture can make a stunning point of difference. Create visually striking elements in display nooks, doors, and other joinery items.

5. Ambient lighting in the kitchen:
A stunning lighting feature, panels are easy to cut to size maximising the impact within this kitchen application. (BY TK DESIGN)

6. Impactful shelf detailing:
Acrylic Couture enhances display shelves with its unique inlay detail, highly polished edges showcase this superbly.

acrylic
couture®



EVERY SURFACE TELLS A STORY

UPCYCLING FOR A CIRCULAR ECONOMY

When using our products, you have created an application with materials that offer durability and longevity and the additional below benefits.

- Minimal manufacturing waste
- Off cuts that are perfect for the creation of small craft, art and furniture items.
- Can be transformed into new joinery at a project's "end of life"
- Renewable surfaces with sanding techniques
- Repairability to extend the lifespan



2011 STARON AWARDS, CONCEPT EDITION WINNER- LIMITED RESOURCES



If you are lucky enough to have any Acrylic Couture offcuts or get to reclaim any material they can be turned into beautiful lighting, furniture and even jewellery.



This beautiful table is 1 of 3 new furniture items created from a closing-down kitchen showroom.



Organoid offcuts are perfect to upcycle book covers, bookmarks, photo frames and more.

This is just a snapshot of our amazing collection of products. Visit our [website](#) to explore our brands Features and Benefits pages, FAQ's and download the high-resolution version of the Residential Edit.

EVERY SURFACE TELLS A STORY

Vol. 3

AUSTARON
SURFACES

Inspire **Imagine** Create™



Discover more from our
great range of products in
The Hospitality & Retail Edit,
available now!

BRING YOUR IDEAS TOGETHER WITH: **STYLE**
SOURCEBOOK



staron®
Solid Surfaces

MARIO ROMANO | WALLS

acrylic
couture

ORGANIC
NATURAL SURFACES

Kaynemaile®

ETTLIN LUX®
MADE FOR UNIQUE PROJECTS