

# Healthcare Solutions





**Staron Design Awards Entrant, 2021**  
**Staron® Reception Counter and Wall Cladding in Pebble Swan**  
**Project:** Redcliffe Hospital, Queensland, Australia  
**Designer:** Thomson Adsett



**staron®**  
 Solid Surfaces

Staron® Solid Surfaces is comprised of a natural and safe pure mineral derived from bauxite ore and blended with an advanced pure acrylic resin, resulting in a premium surface material. Staron was originally developed as a part of the Samsung Chemical portfolio in 1992 and later acquired by LOTTE Corporation in 2016. Trusted for its exceptional quality, Staron Solid Surfaces is sought after for endless applications in both commercial and residential projects. With 100 colours to select from, the range offers diversity with subtle, bold and marble inspired designs available.

Additionally, LOTTE Chemical specialises in chemical materials products and specialised material solution services. Their products and services cover a wide range of areas, including daily essentials such as polymers, basic chemicals, monomers, and building & interior design materials. They also offer products for agriculture, industry, healthcare, vehicles, and cutting-edge new materials.

**AUSTARON**  
 SURFACES

Established in 2003, Austaron Surfaces is locally owned and operated in Australia and New Zealand, catering to the building industry with a diverse range of quality and innovative surfaces.

Create unique applications with the exclusive offerings from Austaron Surfaces. The innovative range of products seamlessly blends aesthetics with practicality, enabling the realisation of distinctive and solution-oriented interior and exterior spaces. Discover the difference that our high-quality surfaces bring to both commercial and residential projects.

Proudly Representing

**staron®**  
 Solid Surfaces

MARIO ROMANO | WALLS

acrylic  
 couture

ORGANOD  
 NATURAL SURFACES

**Kaynemaile®**



Made in South Korea



AU - Group 1 Fire Certificate  
Result to AS5637.1  
(AS ISO 9705: Full scale room test)



NZ - Group 1s Fire Certificate  
Result to C/VM2  
(AS ISO 9705: Full scale room test)



Mineral + Acrylic Composition



Silica & Polyester Free



Hygienic & Stain Resistant



Seamless Design Flexibility



Illumination & Routing  
Opportunity



Colour Versatility



Weatherability & Durability



Greenguard Certified &  
Gold Certified



Environmental Management  
System Certified ISO 14001



National Sanitation Foundation  
for Food Safety Certified

**Staron Design Awards Entrant, 2021**  
**Staron® Reception Counter and Wall Cladding in Pebble Swan**  
**Project:** Redcliffe Hospital, Queensland, Australia  
**Designer:** Thomson Adsett



# Frankston Private Hospital

Victoria, Australia

**Staron Design Awards Entrant, 2018**

**Designer:** Silver Thomas Hanley.

**Staron® colour & application:** Bright White clad to nurses station and reception counter.

**Photography:** Paolo Cappelli.

Silver Thomas Hanley was commissioned to design a new building to extend the existing facilities of Frankston Private Hospital. The contemporary new facility delivers state of the art private healthcare, with material selection playing a key role in reflecting this level of quality. Staron Solid Surfaces were specified across various hospital counters, including a standout nurse station that fully utilises Staron's ability to create expansive, seamless joinery. This feature joinery showcases extensive cabinetry, with thermoforming capabilities enabling soft, curved forms that enhance usability and workflow. The surface flows continuously from the front of the nurse station, across the top counter, and through to the internal work surface, creating a cohesive and highly functional design. The hygienic, non-porous and seamless nature of Staron makes it an ideal solution for healthcare environments. Its monolithic construction and inconspicuous joining eliminate dirt trapping crevices, supporting infection control and ease of maintenance. Warm and inviting to the touch, Staron combines performance with comfort, delivering a safe and durable surface solution for both medical staff and patients.



Cover Image

# Monash Children's Hospital

Victoria, Australia

Staron Design Awards Entrant, 2018

Designer: Silver Thomas Hanley.

Staron® colour & application: Bright White & California Poppy reception desk and nurses station.

Photography: Diana Snape

Monash Children's Hospital is one of Australia's largest children's hospitals, designed to deliver a unified identity for paediatric services across multiple campuses within a progressive, purpose-built facility. Creating a welcoming and reassuring environment was central to the design approach, ensuring young patients feel comfortable, calm and supported throughout their experience. Material selection played a key role in achieving this outcome. Staron Solid Surfaces were specified across a range of reception and nurse counters, bringing together both function and personality within the space. A variety of applications allowed for distinct design expressions, creating visual interest while maintaining a cohesive overall aesthetic. Bold Staron colours such as California Poppy, paired with Bright White, introduce a sense of playfulness while remaining easy to maintain. This balance of vibrancy and practicality supports the needs of a busy healthcare environment. The angled reception design creates an engaging and welcoming arrival point. Staron is seamlessly clad to all sides, achieving a continuous, monolithic finish across all angled junctions. The use of Bright White enhances the geometric form of the cabinetry, delivering a refined yet approachable design that aligns with the overall vision of the hospital.



# Adelaide Women's and Children's Hospital

Adelaide, Australia

Staron Design Awards Entrant, 2011

Designer: GHD, Adelaide.

Staron® colour & application: Metallic Yukon arch and wall cladding.

The Starlight Express Room in the Adelaide Women's and Children's Hospital is a welcome retreat for seriously ill children/teenagers and their families giving them an environment away from the rigours of hospital life. The concept focuses on the idea of an internal garden that aims at bringing the outdoor environment indoors to create a hub of fun and distraction. The key to making the project successful was the use of a serpentine form and materials that ensured a seamless finish. The entry arch was achieved through the use of cladded and thermoformed Staron. In addition, the material was extended through to key joinery items such as the media desks, the TV broadcast hub, ceilings, clad to nurses stations and the sign module. Staron lends itself to hospital environments by ensuring surfaces that are visually stimulating, also meet the stringent hospital standards in relation to cleanliness and hygiene.



# LiveLife Pharmacy

Queensland, Australia

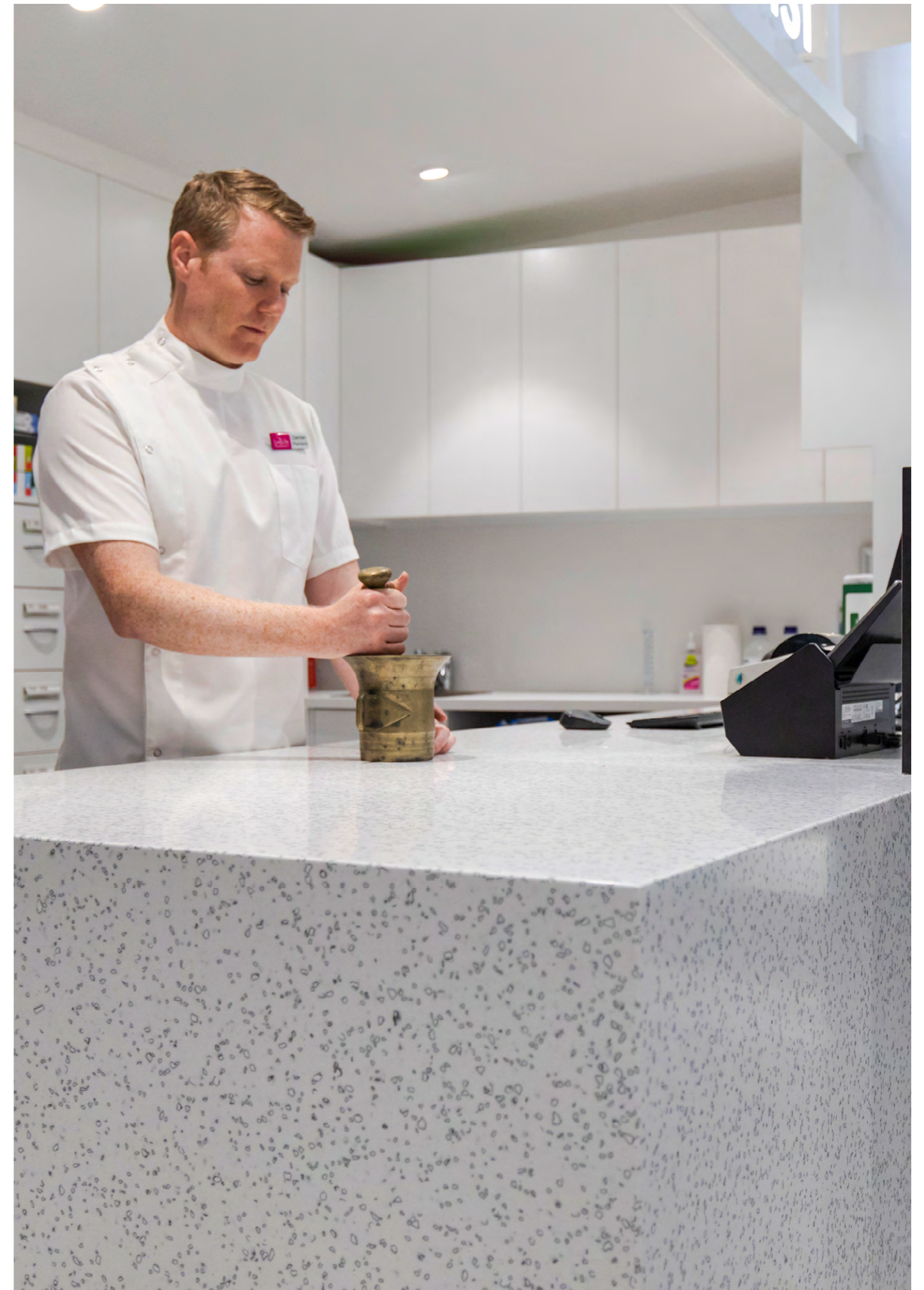
Staron Design Awards Entrant, 2018

**Specified by:** Annette Warner, Annette Warner Pty Ltd, Building Design Consultants.

**Staron® colour & application:** Supreme Ocean View, Mosaic Dalmatian, Mosaic Nimbus, Pharmacy dispensary and point of sale benchtops.

**Cabinetmaker:** Acclaim Shopfitting Pty Ltd.

The retail upgrade of this busy pharmacy on Hastings Street, Noosa Heads, required a material that withstands the high traffic demands of retail, while also providing a hygienic and chemical resistant surface for the pharmacist's needs. The designer chose to combine a variety of different materials throughout the fit-out to complement the beachside location. Staron was selected in colours Supreme Ocean View, Mosaic Dalmatian and Mosaic Nimbus, for its practical qualities and unique colours. It has been used for the dispensary and point of sale benchtops. Staron suits the needs of this environment, and complements all the other finishes, creating a timeless elegance with practical functionality.





# University of Queensland

Queensland, Australia

**Staron Design Awards Entrant, 2014**

**Designer:** Luke Pendergast, Conrad Gargett.

**Staron® colour & application:** Aspen Glacier laboratory benchtops.

**Photography:** Christopher Frederick Jones.

The Teaching Space Project delivered a High-tech PC2 undergraduate interactive wet laboratory facility. The space has been designed to fill identified key gaps in the school's upper-level undergraduate teaching program. The new teaching facility is located within the Heritage Listed Goddard Building (1961) which forms a part of the University of Queensland's Great Court Complex. The project enables the ability to instruct students in modern biological techniques requiring a high level of containment, and the capacity to deliver small-group tutorial-based instruction within the context of computer-based learning. The aim was to provide, high quality, state-of-the-art teaching spaces that are future oriented and have the facilities and flexibility to teach 21st century biology. Staron was used for all the benchtop surfaces, with seamless splashback integration, custom created sinks and anti-drip edge detail. Not only visually appealing, but also offering a hard wearing, non-porous, chemical resistance and seamless surface. - making it an ideal product for a physical containment laboratory design.



# Kingston Hospital

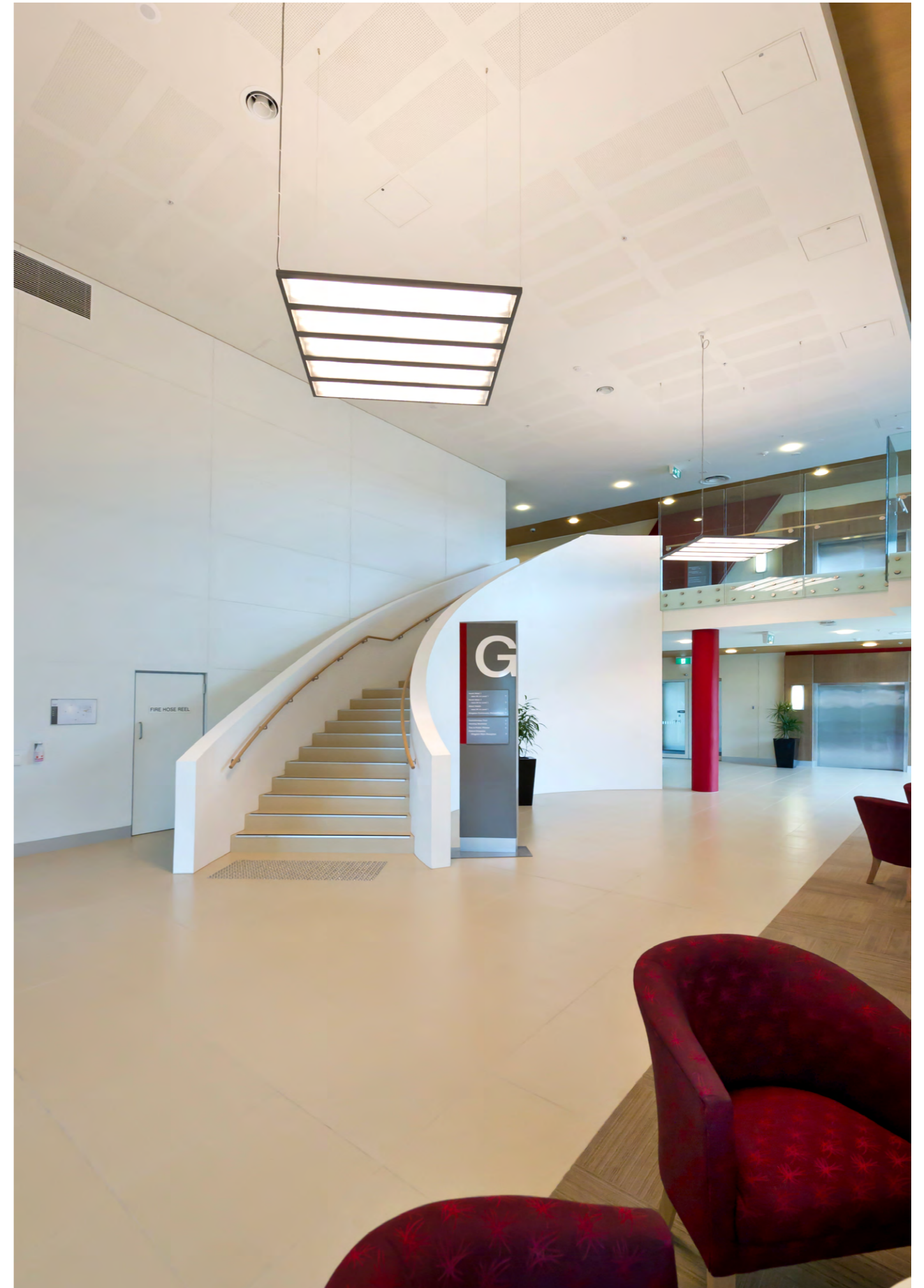
Victoria, Australia

**Designer:** Silver Thomas Hanley.

**Staron® colour & application:** Bright White wall cladding.

**Photography:** Vstyle Photography.

Staron provides a durable and versatile wall surface solution, as demonstrated in the Kingston Hospital project, where the curved staircase serves as a standout feature. For this installation, Staron was applied using a combination of seamlessly joined panels and shadow line detailing, creating a clean aesthetic while also expediting the installation process. The shadowline breaks down the scale of the curve, creating a refined play of light and shadow across the surface. The material can be easily curved through a controlled heating process, allowing for complex forms such as the staircase. In addition to its design flexibility, Staron offers a low-maintenance surface, making it particularly well-suited for high-traffic environments like hospitals.

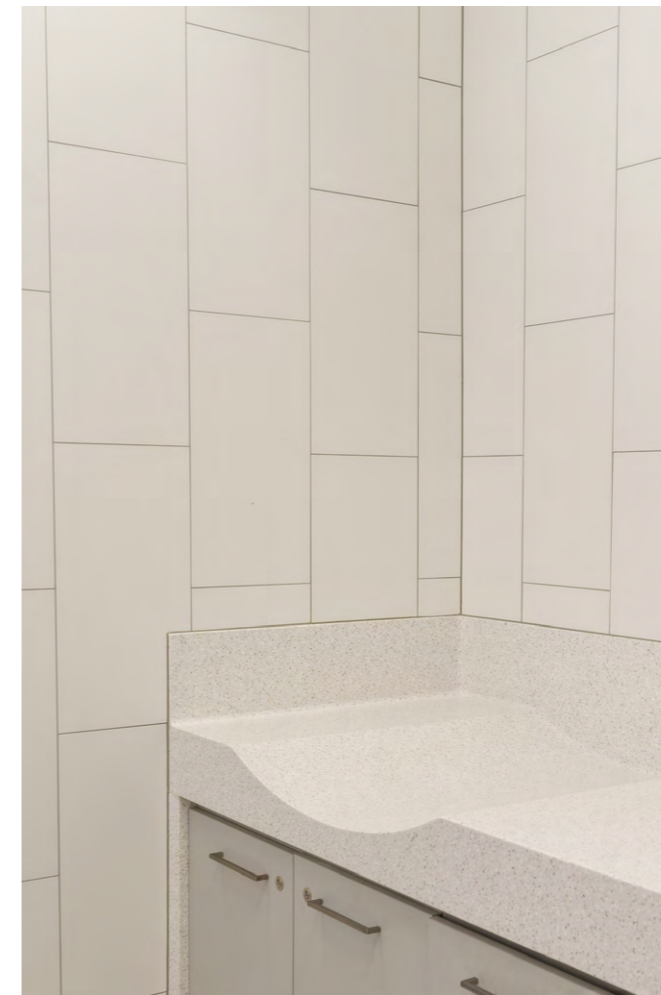


# Integrated Staron Sinks, Splashbacks and Washplanes

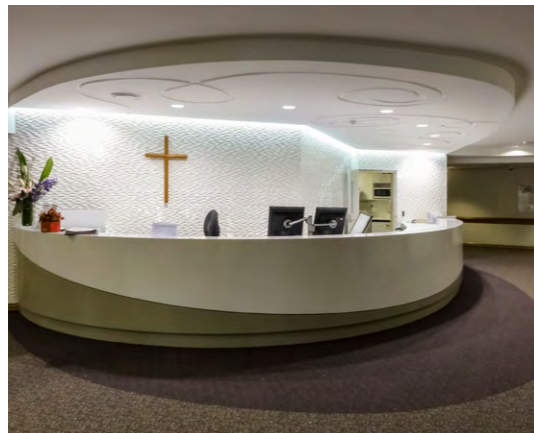
Staron offers a range of standard sinks and vanity bowls, with custom designed options available to suit specific sizes and applications. Each sink is seamlessly joined to the Staron benchtop using a specialised adhesive, creating a smooth, monolithic surface that flows effortlessly from bench to basin, supporting enhanced hygiene and ease of maintenance.

Ergonomic design outcomes can also be easily achieved, including integrated baby change counters that extend into seamless splashbacks. By eliminating open joints and dirt trapping crevices, Staron delivers a clean, low maintenance solution ideal for demanding healthcare environments. Staron® offers a range of standard sinks and vanity bowls, with custom-designed options available to suit specific sizes or applications. Each sink is seamlessly joined to the Staron benchtop using a specialised adhesive, creating a smooth, monolithic surface that flows effortlessly from bench to basin.

For enhanced hygiene and easy maintenance, Staron can also be extended up the wall to form a fully integrated, seamless splashback. By eliminating open joints and dirt-trapping crevices, this design delivers a clean, low-maintenance solution ideal for demanding environments.



# Healthcare Application Solutions with Staron® Solid Surfaces



## NURSES' STATIONS / RECEPTION

Hospital foyers and nurse stations are often designed to service large areas, making Staron an ideal solution for meeting these demands.

The unique properties of solid surface materials allow for seamless on-site joining, enabling greater design flexibility without compromise. This results in a hygienic, seam free, easy-to-maintain surface that is perfectly suited for healthcare environments.

For a cohesive aesthetic, signage and wayfinding can be integrated easily within applications.



## OPERATING THEATRES

The hygienic and low-maintenance properties of Staron make it an excellent solution for operating theatre environments, including walls, countertops, integrated sinks, and vanities. Wash basins can be custom-designed and thermoformed to suit specific spatial and functional requirements.

Its non-porous surface resists stains and inhibits the growth of bacteria, helping to maintain a clean, safe, and hygienic environment for both patients and hospital staff.



## PATIENT ROOMS

Staron's non-porous and uniform composition makes it an ideal hygienic solution for medical service panels and bedhead units. Its seamless integration with fixtures and instruments helps maintain a smooth, continuous surface that supports cleanliness and infection control.

In addition to its functional benefits, Staron has a warm, silky texture, making it a suitable choice for benchtops, side tables, and other furniture within patient rooms, and associated wet areas where both durability and hygiene are essential.



## LABORATORIES

Staron can be customised and thermoformed to create organised, functional workspaces tailored to laboratory needs. Shelves, sinks, and storage compartments can be seamlessly integrated and designed to meet staff requirements while optimising workflow.

Its non-porous, seamless surface makes Staron a superior solution for wet laboratories, providing long-lasting performance year after year. Unlike other materials that may degrade or require frequent replacement in wet conditions, Staron resists stains, moisture, and contamination.



## PUBLIC SPACES

Staron's superior fire performance makes it particularly well suited to healthcare environments, where strict safety standards and material compliance are essential. Independently tested in Melbourne, Australia, Staron achieves a Group 1 fire rating to AS 5637.1 (AUS) and a Group 1S fire rating to C/VM2 (NZ), based on AS ISO 9705 full-scale room testing.

This rating is consistent across the full Staron range, including routed applications such as *Mario Romano Walls*, allowing for cohesive design outcomes without compromising compliance.



## EXTERIOR APPLICATIONS

Designed to withstand the demands of high-traffic environments, Staron is an exceptional surface option for hospital furniture in both interior and exterior applications. It is well suited for seating, tables, planter boxes, exterior cladding for alfresco spaces, and more.

With excellent UV resistance, Staron performs reliably outdoors while requiring minimal maintenance. The surface is also renewable, allowing it to be easily restored through simple cleaning or light sanding.



## MATERNITY & PAEDIATRICS

Staron baby baths can be seamlessly integrated into benchtops or tailored bathing and birthing solutions can be created to suit specific clinical and spatial requirements. To assist with visual awareness and accessibility, alternate Staron colours can be inlaid to clearly define zones, helping guide both staff and patients, including those with visual impairments.

Its thermoformable properties allow for the creation of smooth, ergonomic baby change tables and custom joinery elements. These solutions are supported with detailed specification documentation to assist throughout the design and planning process. Documentation can be viewed [here...](#)



## KIOSKS / CAFETERIAS

Staron meets NSF 51 National Sanitation Foundation accreditation for safe food contact, making it a practical and reliable surface for food preparation and service areas, supporting high hygiene standards in busy healthcare environments. Easy to clean and maintain, Staron does not require sealing and can be sanded to restore its original finish, even after years of use.

This renewable and repairable quality is particularly valuable in kiosks and cafeterias, where surfaces are subject to constant wear. These attributes make it an great choice for projects prioritising durability, longevity, and ongoing performance in food service settings.



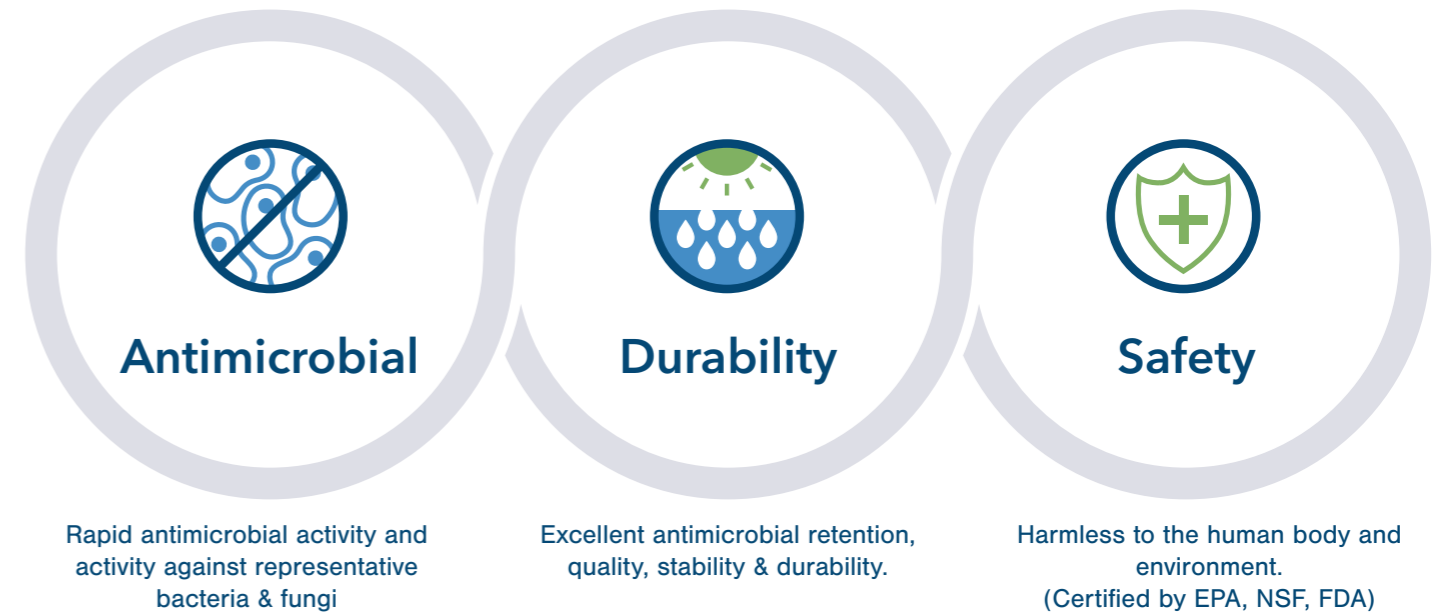
**Staron Design Awards Entrant, 2021**  
**Staron® benchtop in cotton white.**  
**Project:** Dermatologist, Queensland, Australia  
**Designer:** Map Solutions Architects

# evermoin®

Staron solid surfaces provide superior hygienic performance compared to many traditional materials due to their non-porous, homogeneous composition and seamless fabrication, which prevents the accumulation of dirt, moisture, and bacteria. Additionally, the Staron Evermoin range offers enhanced hygiene benefits through built-in antimicrobial properties, helping to further inhibit the growth of microorganisms.

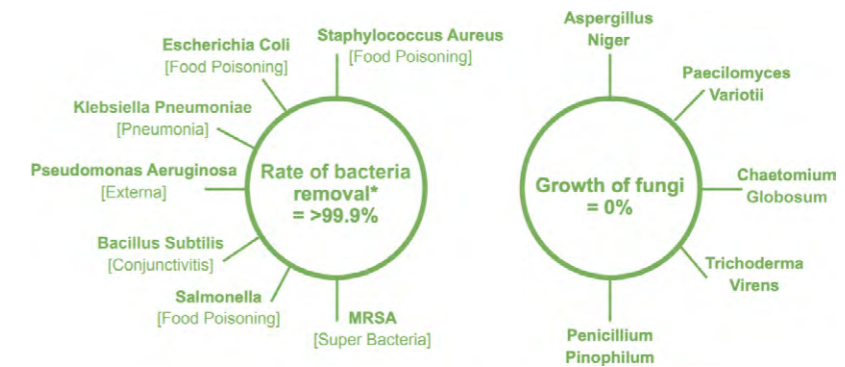
- **Antibacterial:** A surface that does not support bacterial growth within the material and can be effectively cleaned due to its non-porous structure.
- **Antimicrobial:** A surface that actively inhibits or reduces the growth of microorganisms through built-in antimicrobial technology.

## Benefits of Staron Evermoin



**Staron® Evermoin® has fast antimicrobial activity to the most common bacteria.**

*\*The bacteria removal rate >99.9% means the number of bacteria is reduced from 10 million to 10,000.*



The design versatility of Staron means that limitless edge profile thicknesses and designs can be fabricated monolithically from a 12mm sheet. The joining capabilities also create smooth, wide and long surfaces with no open joints - just one continuous surface that looks and performs as one piece of solid surface.





#### Fire Certification

- » Group 1: AS5637.1 & Group 1S: C/VM2 Fire Certification (AS ISO 9705: Full Scale Room Test)

#### Certification

- » Evermoim Ultrabright SIAA Certificate
- » IAPMO for Sink & Bowl
- » NSF ANSI 51
- » ISO 45001
- » ISO 9001

#### Safety Data Sheets

- » Staron Solid Surfaces & Classic Sinks SDS
- » Staron Adhesive (Component A) SDS
- » Staron Adhesive (Component B) SDS
- » Staron Evermoim SDS
- » Staron Tempest Collection SDS
- » Gemstone Sink Collection SDS
- » Silica Free Statement

#### Environmental & Sustainability

- » Lotte Chemical ESG Report
- » Environmental Product Declaration
- » GREENGUARD Certification: Staron Solid Surface Sheets
- » GREENGUARD Gold Certification: Staron Solid Surface Sheets
- » GREENGUARD Gold Certification: Staron Solid Surface Sinks & Bowls
- » GREENGUARD Certification: Staron Tempest
- » GREENGUARD Gold Certification: Staron Tempest
- » ISO 14001 Certification
- » ISO 50001 Certification
- » Sustainability Management System
- » Compliance Management
- » Ethical Management
- » Environmental & Safety Management
- » Social Contribution
- » Sustainability Reports
- » Staron® Recycled Series

#### Staron Design Awards Entrant, 2021

#### Staron® Reception Counter and Wall Cladding in Pebble Swan

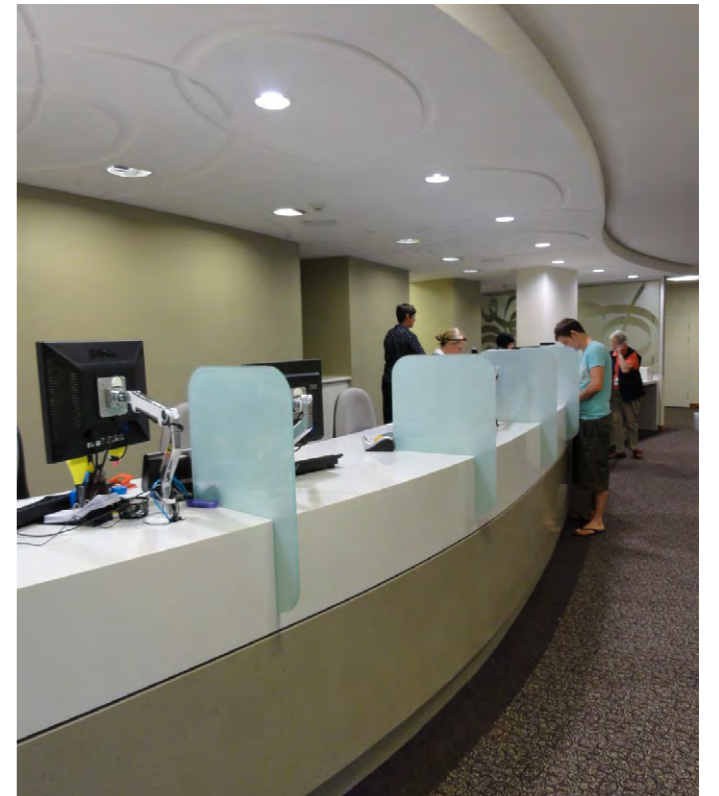
**Project:** Redcliffe Hospital, Queensland, Australia

**Designer:** Thomson Adsett

Staron® is a silica free surface manufactured by LOTTE Chemical, a renowned industry leader known for its commitment to quality.

“LOTTE Chemical strives to fulfill its corporate economic, social and environmental responsibilities, and to move toward a sustainable tomorrow by protecting the one and only planet Earth”. In 2022, LOTTE Chemical unveiled ‘Green Promise 2030’, an ESG strategy that aligns with their new corporate vision of ‘Every Step for GREEN’. Aiming to achieve future-oriented value growth by taking the lead in sustainable future industries, contributing to the environment and society by pursuing carbon neutrality, eco-management, and social value creation based on circulation and coexistence.

Supplier Transparency: [lottechem.com](https://www.lottechem.com) & [staron.com](https://www.staron.com)



**PHOTO CREDITS**

- 1,3,4,6: Kingston Hospital | Design: Silver Thomas Hanley | Photos: Vstyle
- 2: Gemlife over 50's living Mario Romano
- 6: Wayfinding
- 7: Queensland Fertility Group | Design: Pearl Architects

- 8: General University Hospital
- 9: Riverside Dental | Design: Ego Squared Architects
- 10: Royal Melbourne Hospital | Fabrication: Michael Shiavello
- 11: Wesley Hospital | PDT Architects



**staron**<sup>®</sup>  
Solid Surfaces

by **AUSTARON**  
SURFACES

[austaronsurfaces.com](http://austaronsurfaces.com)

AU: [sales@austaron.com.au](mailto:sales@austaron.com.au)

Tel. 1300 STARON

NZ: [sales@austaron.co.nz](mailto:sales@austaron.co.nz)

Tel. Upper North Island, +64 211 322 565

Tel. Lower North & South Island, +64 221 008 848

Manufacturer: LOTTE Chemical | [lottechem.com](http://lottechem.com)

Brochure V.2 | Last Updated: 09.04.2026

